



<b>EAN:</b>	4013288119285	<b>Size:</b>	153x116x41 mm
<b>Part number:</b>	05104655001	<b>Weight:</b>	390 g
<b>Article number:</b>	845/8	<b>Country of origin:</b>	CZ
		<b>Customs tariff number:</b>	82075060

- Ideal for mobile repair and assembly work
- Rapid, uncomplicated change between drill, countersinking or screwdriving bit
- 1/4" drive suitable for power screwdrivers
- For countersinking and deburring
- 1-flute

8-piece countersink bit set in a stable plastic box for countersinking and deburring. The hexagonal shaft ensures very good power transfer. Ensures rattle and score-free working. Perfect chip removal and great durability. High quality, ergonomic bit holder equipped with a magnet. The Rapidaptor ensures rapid bit change without any extra tools. For insertion in the power screwdriver or for use in the chuck of the electric drill.

**Web link**
<https://www.wera.de/en/05104655001>

Wera - 845/8

05104655001 - 4013288119285

Wera Werkzeuge GmbH

Korzter Straße 21-25

D-42349 Wuppertal

Tel: +49 (0)2 02 / 40 45-0

E-Mail: info@wera.de

**1-flute countersink bit**



1-flute countersink bits, 90°  
 Application: Deburring, chamfering and countersinking  
 1/4" drive suitable for holders as per DIN 3126-D 6.3 (ISO 1173)  
 Hexagon shaft for very high torque transfer  
 1 tip  
 Guaranteed vibration-free and scratch-free operation  
 Optimal countersink surface quality  
 Long service life  
 Perfect chip removal  
 High corrosion protection

**Kraftform**



The basic idea for the prototype of the Kraftform handle - that the hand should dictate the design - has, right through to today, proved to be correct. In cooperation with the internationally recognised Fraunhofer IAO Institute, Wera developed a screwdriver handle designed to match the shape of the human hand as long ago as the 1960s. After a long development phase, the Wera Kraftform handle was launched to the market in 1968. It has been optimised through the years with new technologies, but has kept its proven shape. After all, the human hand has not changed either.

**Rapidaptor holder**



Lightning-fast bit change without any extra tools. One-handed operation. With fast-rotating sleeve for easy welding of the screwdriver.

**Chuck-all**



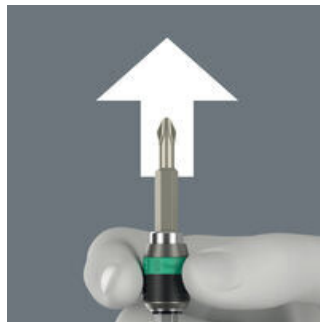
The Rapidaptor quick-release chucks hold 1/4" DIN ISO 1173-C 6,3 and E 6,3 as well as Wera series 1 and 4 bits.

**Rapid-in and self-lock**



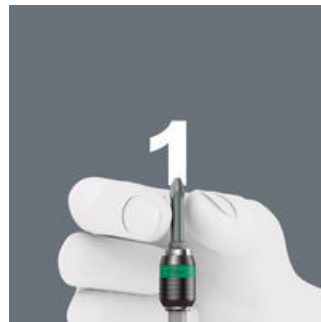
The bit can be pushed into the adaptor without moving the sleeve. The lock is activated automatically as soon as the bit is applied to the screw. Bits are held securely and wobble-free.

**Rapid-out**



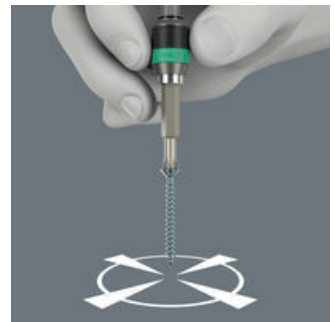
Simply push the sleeve forward to change the bit. The spring mechanism lifts the bit off the magnet and unlocks the tool. The bit can be easily removed. The rapid-out function makes it easy to remove even the smallest bits without extra tools.

**Single-hand function**



Every function of the Rapidaptor quick-release chuck, such as inserting or releasing bits, can be carried out with one hand. This is faster, more economical and more ergonomic. There are no unnecessary manoeuvres.

**Rapid-spin**



The free-turning sleeve allows screw steadying at the start of the screwdriving process. This makes it easier to apply the tool to the screw and prevents slipping. It can also be used as a short extension for 1/4" applications e.g. in combination with the Wera Zyklus Ratchets.

Web link  
<https://www.wera.de/en/05104655001>

Wera - 845/8  
 05104655001 - 4013288119285

Wera Werkzeuge GmbH  
 Korzter Straße 21-25  
 D-42349 Wuppertal  
 Tel: +49 (0)2 02 / 40 45-0  
 E-Mail: info@wera.de

Set contents:

**816 R Bitholding screwdriver with Rapidaptor quick-release chuck, 1/4" x 119 mm**



05051462001 1x 1/4" x 119 mm



**888/4/1 K Rapidaptor Universal Bit Holder, 1/4" x 50 mm**



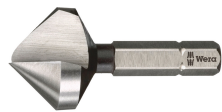
05052500001 1x 1/4" x 50 mm



**845 1-flute Countersink Bits, 6.30 x 32 mm**



05104660001	1x	6.30 x 32 mm
05104661001	1x	8.30 x 32 mm
05104662001	1x	10.40 x 34 mm
05104663001	1x	12.40 x 36 mm
05104664001	1x	16.50 x 40 mm
05104665001	1x	20.50 x 43 mm



Web link

<https://www.wera.de/en/05104655001>

Wera - 845/8

05104655001 - 4013288119285

Wera Werkzeuge GmbH

Korzter Straße 21-25

D-42349 Wuppertal

Tel: +49 (0)2 02 / 40 45-0

E-Mail: [info@wera.de](mailto:info@wera.de)