

EAN:	4013288173003	Size:	190x100x35 mm
Part number:	05056490001	Weight:	498 g
Article number:	Tool-Check PLUS	Country of origin:	CZ
		Customs tariff number:	82079030

- Convenient direction change thanks to switchover lever
- Fine-pitched ratchet mechanism and small return angle of 6°
- Very robust without any restrictions on torque
- Quick-release chuck with Rapidaptor technology
- With Take it easy tool finder: colour coding by size

Tool combination of ratchet, bit, sockets and a bitholding screwdriver in the smallest of spaces. The perfect universal companion for a multitude of screwdriving applications. Premium bitholding screwdriver with Kraftform Plus handle for comfortable ergonomic screwdriving, avoiding blisters and calluses. Hard handle zones for high working speeds, soft handle zones for a high torque transfer. Bit ratchet for quick working when screwdriving with a machine or conventional hand tool is not possible due to space constraints. Rapid reversing from clockwise to anti-clockwise rotation and vice versa via the reversing lever. The knurling on the ratchet head allows for quick rotation (with the thumb). Easiest operation, even with just one hand. Ergonomic ratchet head/lever: Kraftform geometry with perfectly shaped contact surfaces for the fingers. Smallest possible tool design thanks to the direct bit mounting in the ratchet head, perfect for low working heights. Small return angle of 6° for precise working. Robust drop-forged solid steel design. Torques of over 65 Nm. The Rapidaptor bitholding screwdriver with fast-rotating sleeve: Can be used as an extension, for lightning-fast bit changes for even the smallest bit sizes with just one hand and without any extra tools. Tough bits, for universal use. Hand and machine sockets for nearly all applications. With Take it easy tool finder with colour coding by size - for quick and easy identification of the required tool. Slip-proof for easy grip even with oily hands. With ball stop groove. For external hexagon screws and bolts. Made of matte-chromed chrome-vanadium.



Web link

Wera - Tool-Check PLUS
05056490001 - 4013288173003

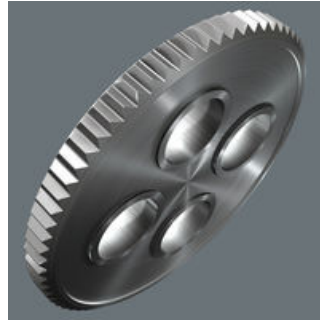
Wera Werkzeuge GmbH
Korzter Straße 21-25
D-42349 Wuppertal
Tel: +49 (0)2 02 / 40 45-0
E-Mail: info@wera.de

The Zyklop Mini Ratchets



For all difficult-to-access applications.

The Zyklop Mini



The fine tooth mechanism, with its 60 teeth, allows a small return angle of only 6° - ideal for precision work.

Simple direction change



Simple switching between left/right operations.

Rapid screwdriving



High working speeds can be attained with the Zyklop Mini bit ratchet. The thumb wheel is important, enabling more rapid screwdriving, and the lever of the Zyklop Mini only needs to be used for the final tightening of the screw.

Slim design



Its slim design makes it ideal for all particularly confined working situations.

Take it easy tool finder system



Take it easy tool finder system - with profile and size colour-coding for quick and easy tool selection. Colour-coded system for hexagon drive screws (L-Keys, Zyklop bit sockets), external hex drive screws and nuts (Joker wrenches, Zyklop sockets and Zyklop bit sockets with holding function), and TORX® drive screws (L-Keys, Zyklop bit sockets).

Is such a small tool sufficiently resilient?



The Zyklop Mini 1 can withstand a torque up to 65 Nm. That is far more power than can normally be transferred to such a small tool.

Bit-Check as a lever



The Bit-Check itself can be used as a lever.

Web link

Wera - Tool-Check PLUS
05056490001 - 4013288173003

Wera Werkzeuge GmbH
Korzter Straße 21-25
D-42349 Wuppertal
Tel: +49 (0)2 02 / 40 45-0
E-Mail: info@wera.de

Set contents:

8001 A Bit Ratchet 1/4", 1/4" x 87 mm



1x 1/4" x 87 mm

813 Bitholding screwdriver, 1/4" x 78 mm



05051274001

1x 1/4" x 78 mm

889/4/1 K Rapidaptor Universal Bit Holder, 1/4" x 50 mm



05052502001

1x 1/4" x 50 mm

870/1 Adaptor, 1/4" x 25 mm



05136000001¹⁾

1x 1/4" x 25 mm

1) With friction ball; for manual nut spinner sockets

8790 HMA Zyklus 1/4" socket, 5.5 x 23 mm



05003504001

1x 5.5 x 23 mm

05003505001

1x 6 x 23 mm

05003506001

1x 7 x 23 mm

05003507001

1x 8 x 23 mm

05003509001

1x 10 x 23 mm

05003511001

1x 12 x 23 mm

05003512001

1x 13 x 23 mm

851/1 TZ bits, PH 1 x 25 mm



05056505001

2x PH 1 x 25 mm

05056510001

3x PH 2 x 25 mm

05056525001

1x PH 3 x 25 mm

855/1 TH bits, PZ 1 x 25 mm



05056910001

1x PZ 1 x 25 mm

05056915001

3x PZ 2 x 25 mm

05056925001

1x PZ 3 x 25 mm

867/1 TZ TORX® bits, TX 10 x 25 mm



05066305001

1x TX 10 x 25 mm

05066308001

1x TX 15 x 25 mm

05066310001

1x TX 20 x 25 mm

05066312001

1x TX 25 x 25 mm

05066315001

1x TX 30 x 25 mm

05066320001

1x TX 40 x 25 mm

Web link

Wera - Tool-Check PLUS
05056490001 - 4013288173003

Wera Werkzeuge GmbH
Korzter Straße 21-25
D-42349 Wuppertal
Tel: +49 (0)2 02 / 40 45-0
E-Mail: info@wera.de

867/1 Z TORX® B0 bits with bore hole, TX 10 x 25 mm



05066500001	1x	TX 10 x 25 mm
05066505001	1x	TX 15 x 25 mm
05066510001	1x	TX 20 x 25 mm
05066515001	1x	TX 25 x 25 mm
05066525001	1x	TX 30 x 25 mm

840/1 Z bits, 3 x 25 mm



05056315001	1x	3 x 25 mm
05056320001	1x	4 x 25 mm
05056325001	1x	5 x 25 mm
05056330001	1x	6 x 25 mm
05056335001	1x	8 x 25 mm

800/1 TZ bits, 1 x 5.5 x 25 mm



05056225001	1x	1 x 5.5 x 25 mm
-------------	----	-----------------

Discontinued item. New version available from 1 June 2025.

Web link

Wera - Tool-Check PLUS
05056490001 - 4013288173003

Wera Werkzeuge GmbH
Korzter Straße 21-25
D-42349 Wuppertal
Tel: +49 (0)2 02 / 40 45-0
E-Mail: info@wera.de