

Bit-Check 30 Zyklus Mini 2, 31 pieces

Zyklus Mini 1



EAN:	4013288145765	Size:	170x85x35 mm
Part number:	05346293001	Weight:	361 g
Article number:	Bit-Check 30 Zyklus Mini 2	Country of origin:	CZ
		Customs tariff number:	82079030

- Bit-Checks convince due to their functionality in a minimum of space
- Wera Mini ratchet for particularly fast screwdriving even in confined spaces
- Ideal for working in confined spaces
- Tough viscous bits for universal use
- In handy and robust Bit-Check

The Wera Mini ratchet: a symbiosis of strength and stylishness. Incredibly robust due to its drop-forged, full-steel design. Can withstand torque forces up to 65 Nm. The petite sizing is particularly suited for work in confined spaces. The thumbwheel allows fast screwdriving. Comes in a set in the proven Wera Bit-Check with socket adaptor and belt clip. Simple tool removal and reinsertion is ensured, very robust and durable.

Web link

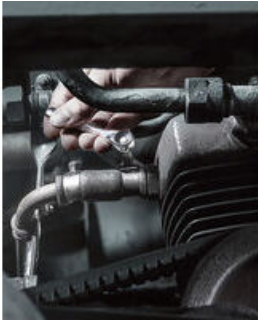
https://products.wera.de/en/ratchets_and_accessories_zyklus_mini_zyklus_mini_1_bit-check_30_zyklus_mini_2.html

Wera - Bit-Check 30 Zyklus Mini 2
05346293001 - 4013288145765

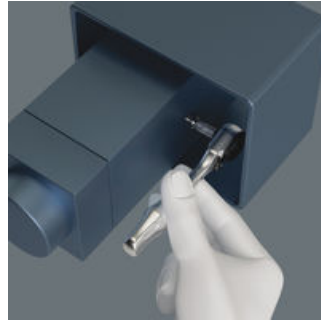
Wera Werkzeuge GmbH
Korzter Straße 21-25
D-42349 Wuppertal
Tel: +49 (0)2 02 / 40 45-0
E-Mail: info@wera.de

Zyklus Mini 1

The Zyklus Mini Ratchets

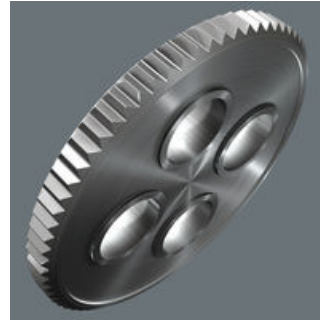


Zyklus Mini



For all difficult-to-access applications.

Small return angle



The fine tooth mechanism, with its 60 teeth, allows a small return angle of only 6° - ideal for precision work.

Rapid screwdriving



Thumbwheel enables rapid screwdriving, even when there isn't sufficient room for ratcheting use.

Simple direction change



Simple switching between left/right operations.

Slim design



Its slim design makes it ideal for all particularly confined working situations.

Is such a small tool sufficiently resilient?



The Zyklus Mini 1 can withstand at least 65 Nm. That is far more power than can normally be transferred to such a small tool.

What parts can be connected to the Zyklus Mini 1?



Bits and sockets. Bits can be connected directly. However, a holder can be connected first and then the bit can be attached to this. This then serves as an extension with a free-turning sleeve. An adaptor e.g. Wera 870/1 is needed for sockets - 1/4" hexagonal on a square drive (included in the Bit-Check and with the individual Zyklus Mini 1 in the set).

Web link

https://products.wera.de/en/ratchets_and_accessories_zyklus_mini_zyklus_mini_1_bit-check_30_zyklus_mini_2.html

Wera - Bit-Check 30 Zyklus Mini 2
05346293001 - 4013288145765

Wera Werkzeuge GmbH
Korzer Straße 21-25
D-42349 Wuppertal
Tel: +49 (0)2 02 / 40 45-0
E-Mail: info@wera.de

Bit-Check 30 Zyklus Mini 2, 31 pieces

Zyklus Mini 1

Set contents:

8001 A Bit Ratchet 1/4", 1/4" x 87 mm



1x 1/4" x 87 mm



889/4/1 K Rapidaptor Universal Bit Holder, 1/4" x 50 mm



05052502001

1x 1/4" x 50 mm



870/1 Adaptor, 1/4" x 25 mm



05136000001¹⁾

1x 1/4" x 25 mm

1) With friction ball; for manual nut spinner sockets



851/1 TZ bits, PH 1 x 25 mm



05056505001

2x PH 1 x 25 mm

05056510001

3x PH 2 x 25 mm

05056525001

1x PH 3 x 25 mm



Web link

https://products.wera.de/en/ratchets_and_accessories_zyklus_mini_zyklus_mini_1_bit-check_30_zyklus_mini_2.html



Wera - Bit-Check 30 Zyklus Mini 2
05346293001 - 4013288145765

Wera Werkzeuge GmbH
Korzter Straße 21-25
D-42349 Wuppertal
Tel: +49 (0)2 02 / 40 45-0
E-Mail: info@wera.de



Bit-Check 30 Zyklus Mini 2, 31 pieces

Zyklus Mini 1



867/1 TZ TORX® bits, TX 10 x 25 mm

	05066305001	1x	TX 10 x 25 mm
	05066308001	1x	TX 15 x 25 mm
	05066310001	1x	TX 20 x 25 mm
	05066312001	1x	TX 25 x 25 mm
	05066315001	1x	TX 30 x 25 mm
	05066320001	1x	TX 40 x 25 mm



867/1 Z TORX® B0 bits with bore hole, TX 10 x 25 mm

	05066500001	1x	TX 10 x 25 mm
	05066505001	1x	TX 15 x 25 mm
	05066510001	1x	TX 20 x 25 mm
	05066515001	1x	TX 25 x 25 mm
	05066525001	1x	TX 30 x 25 mm



840/1 Z bits, 3/32" x 25 mm

	05135072001	1x	3/32" x 25 mm
	05135073001	1x	1/8" x 25 mm
	05135074001	1x	5/32" x 25 mm
	05135075001	1x	3/16" x 25 mm
	05135076001	1x	1/4" x 25 mm

800/1 TZ bits, 1 x 5.5 x 25 mm

	05056225001	1x	1 x 5.5 x 25 mm
			

868/1 Z Square-Plus bits, # 1 x 25 mm

	05066405001	1x	# 1 x 25 mm
	05066410001	3x	# 2 x 25 mm
	05066415001	1x	# 3 x 25 mm

Web link

https://products.wera.de/en/ratchets_and_accessories_zyklus_mini_zyklus_mini_1_bit-check_30_zyklus_mini_2.html

Wera - Bit-Check 30 Zyklus Mini 2
05346293001 - 4013288145765

Wera Werkzeuge GmbH
Korzter Straße 21-25
D-42349 Wuppertal
Tel: +49 (0)2 02 / 40 45-0
E-Mail: info@wera.de