



EAN:	4013288237378	Size:	1150x1020x540 mm
Part number:	05150131001	Weight:	153000 g
Article number:	9701	Country of origin:	DE (05)
		Customs tariff number:	94032080

- XXL roller cabinet in the exclusive Tool Rebel design
- Width x height x depth: 1133 x 1020 x 518 mm
- Extremely robust thanks to a double-walled design
- Large storage and work surface in stainless steel; completely sealed to protect the inside of the cabinet, e.g. from leaking liquids
- With 7 drawers (5 flat, 2 high) - of which 2 flat drawers are equipped with foam inserts and tools (e.g. with Zyklop Speed ratchets and accessories (1/4" and 1/2"), Joker ratcheting combination wrenches and combination wrenches, Kraftform screwdrivers, L-keys, Kraftform Kompakt 60 and Tool-Check PLUS)
- Dimensions flat drawers (width x height x depth): 870 x 81 x 398 mm
- Dimensions high drawers (width x height x depth): 870 x 166 x 398 mm
- 100 % drawer pull-out with ball bearing telescopic slides, self-closing

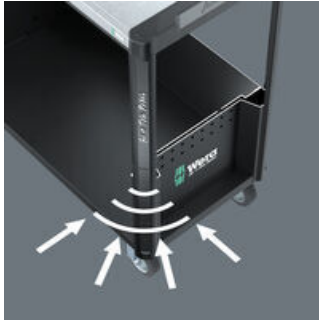
Exclusive roller cabinet in the Tool Rebel design. Large storage and work surface in stainless steel; completely sealed to protect the inside of the cabinet, e.g. from leaking liquids. Five flat and two high drawers ensure efficient, mobile organization of tools and materials. Extremely robust thanks to a double-walled design and the completely welded construction of the entire body. Edge protection with cushioning effect at all four corners for optimal impact protection. For daily hard work in the workshop. Equipped with 7 Wera foam inserts: 9710 foam insert screwdriver set 1, 9720 foam insert 8000 A Zyklop ratchet set 1 (1/4"), 9722 foam insert 8000 C Zyklop ratchet set 1 (1/2"), 9730 foam insert 6000 Joker ratcheting combination wrench set 1, 9731 foam insert 6003 Joker combination wrench set 1, 9740 foam insert L-key set 1, 9750 foam insert Kraftform Kompakt and Tool-Check PLUS set 1.

Web link
<https://www.wera.de/en/05150131001>

Wera - 9701
 05150131001 - 4013288237378

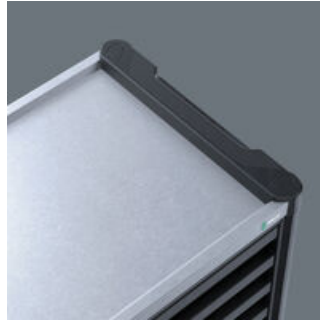


Robust design for hard work in the workshop



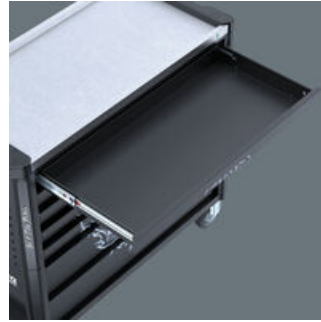
The double-walled design and the completely welded construction make the Tool Rebel roller cabinet extremely robust. The optimized yielding edge protection on all four corners ensures reliable impact protection thanks to an internal cushioning action.

Storage and work surface with lots of advantages



The large storage and work surface is made of stainless steel and, being also completely sealed, the inside of the trolley is protected from leaking liquids.

Sophisticated drawer design



The drawers are equipped with ball bearing telescopic slides and can be pulled out completely. Self-closing and mutually locking to prevent unintentional opening, thus minimal risk of tilting of the roller cabinets. The carefully considered drawer design allows optimal use of the interior space. The dirt-resistant drawer coating makes cleaning easy.

Detailed locking concept for more security



The ergonomically arranged lateral position of the lock improves usability and protects the key and lock from damage. The extremely robust locking system protects the tools stored in the roller cabinet against unauthorized access. The central locking is completed by a cylinder lock. Two folding keys are included.

Heavy-duty gear



The Tool Rebel roller cabinet has large, robust wheels with precision ball bearings and double ball rims in the spindle carrier. Even under high dynamic loads, the roller cabinet is easy to move.

Secure locking, smooth running



The two swivel castors are equipped with a double stop: The locked castor reliably prevents it from rolling away, the locked spindle carrier prevents the castors from turning unintentionally, e.g. on sloped surfaces. The oil- and acid-resistant elastic wheels ensure smooth running. A protective ring prevents the ingress of dirt and threads.

High loads



The dynamic load of the roller cabinets is 750 kg, the static load is 1,000 kg and the drawer load is 40 kg.

Web link
<https://www.wera.de/en/05150131001>

Wera - 9701
 05150131001 - 4013288237378

Wera Werkzeuge GmbH
 Korzter Straße 21-25
 D-42349 Wuppertal
 Tel: +49 (0)2 02 / 40 45-0
 E-Mail: info@wera.de

Set contents:

9710 Foam insert screwdriver set 1, 18 pieces

⊕ 05150101001 1x 18 pieces



9720 Foam insert 8000 A Zyklus 1/4" ratchet set 1, 37 pieces

⊗ 05150110001 1x 37 pieces



9722 Foam insert 8000 C Zyklus 1/2" ratchet set 1, 31 pieces

⊙ 05150112001 1x 31 pieces



9730 Foam insert 6000 Joker set 1, 11 pieces

05150120001 1x 11 pieces



9731 Foam insert 6003 Joker set 1, 19 pieces

05150121001 1x 19 pieces



Web link

<https://www.wera.de/en/05150131001>

Wera - 9701

05150131001 - 4013288237378

Wera Werkzeuge GmbH

Korzter Straße 21-25

D-42349 Wuppertal

Tel: +49 (0)2 02 / 40 45-0

E-Mail: info@wera.de

9740 Foam insert L-key set 1, 20 pieces

05150140001

1x 20 pieces



9750 Foam insert Kraftform Kompakt and Tool-Check PLUS set 1, 57 pieces



05150150001

1x 57 pieces



Web link

<https://www.wera.de/en/05150131001>

Wera - 9701

05150131001 - 4013288237378

Wera Werkzeuge GmbH

Korzter Straße 21-25

D-42349 Wuppertal

Tel: +49 (0)2 02 / 40 45-0

E-Mail: info@wera.de