



EAN:	4013288236937	Size:	405x185x55 mm
Part number:	05150118001	Weight:	2209 g
Article number:	9728	Country of origin:	TW
		Customs tariff number:	82042000

- Durable foam insert, each tool has its own place; two-coloured, missing tools will quickly be noticed
- Long 3/8" socket wrench for low-lying couplings in confined spaces und protruding thread rods
- For use with electric or pneumatic wrenches with 3/8" drive
- Impaktor technology for above-average service life
- Hexagon profile allows precise and profile-friendly screwdriving with high power transmission
- With cross hole and ring socket to attach the safety pin and safety ring of machine operated tools
- With Take it easy tool finder: colour coding by size
- Width x height x depth: without tools 172 x 30 x 392 mm, with tools 172 x 47 x 392 mm

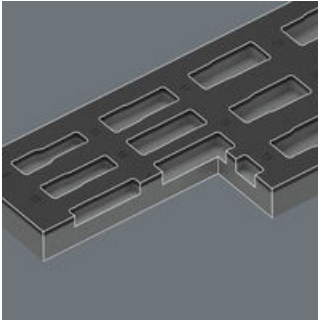
Durable foam insert; two-coloured for quick identification of missing parts; suitable for the Tool Rebel roller cabinets. Equipped with: 14 Impaktor Deep sockets; for use with electric or pneumatic wrenches with 3/8" drive. Long design for low-lying couplings and protruding thread rods. The Impaktor technology ensures higher-than-average service life even at extreme requirements. The hexagon profile used allows high power transmission while simultaneously being precise and protecting the profile. With Take it easy tool finder: colour coding by size and extra laser-engraved size indication.

Web link
<https://www.wera.de/en/05150118001>

Wera - 9728
 05150118001 - 4013288236937

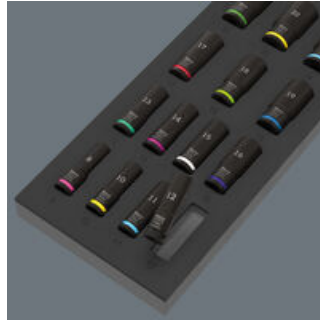
Wera Werkzeuge GmbH
 Korzter Straße 21-25
 D-42349 Wuppertal
 Tel: +49 (0)2 02 / 40 45-0
 E-Mail: info@wera.de

Safe storage and quick overview



The tools sit securely in the foam thanks to precise contour cutouts, but are easy to remove. The carefully designed arrangement of the tools ensures space-saving storage and quick access to each tool.

Two-coloured foam insert



After removing the tool the light grey second foam becomes visible and therefore missing tools are quickly identified.

For electric or pneumatic wrenches



The extremely robust forged design ensures higher-than-average service life of the Impaktor sockets even at extreme requirements.

Long design



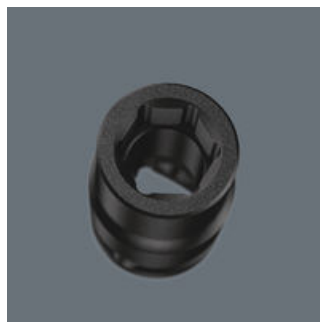
Thanks to the long design of the sockets, even couplings in tight spaces can be reached. Screwdriving at protruding thread rods can also be possible.

Cross hole and ring socket



Thanks to the hole and the ring socket, the tools can be held securely on the power tool with a safety pin or an O-ring.

Profile-friendly power transmission



The hexagon profile offers the transmission of high forces and loads the edges of the bolt or the screw head less than a double hexagon profile. Fine-toothed ratchets also make use of a double hexagon profile superfluous, even in confined spaces, thanks to their small return angle.

Take it easy tool finder system



Take it easy tool finder with colour coding by size and with extra size stamping - for quick and easy identification of the required tool

Web link
<https://www.wera.de/en/05150118001>

Wera - 9728
 05150118001 - 4013288236937

Wera Werkzeuge GmbH
 Korzter Straße 21-25
 D-42349 Wuppertal
 Tel: +49 (0)2 02 / 40 45-0
 E-Mail: info@wera.de

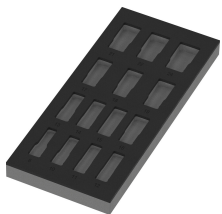
Set contents:

8790 B Impaktor Deep Socket with 3/8" drive, 8 x 63 mm



05005550001	1x	8 x 63 mm
05005551001	1x	10 x 63 mm
05005552001	1x	11 x 63 mm
05005553001	1x	12 x 63 mm
05005554001	1x	13 x 63 mm
05005555001	1x	14 x 63 mm
05005556001	1x	15 x 63 mm
05005557001	1x	16 x 63 mm
05005558001	1x	17 x 63 mm
05005559001	1x	18 x 63 mm
05005560001	1x	19 x 63 mm
05005561001	1x	21 x 63 mm
05005562001	1x	22 x 63 mm
05005563001	1x	24 x 63 mm

9828 Foam insert Zyklop B 3/8" Impaktor Deep socket set 1, without tools, 172 x 30 x 392 mm



05137317001 ¹⁾	1x	172 x 30 x 392 mm
---------------------------	----	-------------------

1) Attention: The foam insert does not fit in the previous model 05501051001 of the roller cabinet.

Web link

<https://www.wera.de/en/05150118001>

Wera - 9728

05150118001 - 4013288236937

Wera Werkzeuge GmbH

Korzter Straße 21-25

D-42349 Wuppertal

Tel: +49 (0)2 02 / 40 45-0

E-Mail: info@wera.de