

EAN:	4013288236777	Size:	405x185x55 mm
Part number:	05150117001	Weight:	1325 g
Article number:	9727	Country of origin:	CZ
		Customs tariff number:	82041100

- Durable foam insert, each tool has its own place; two-coloured, missing tools will quickly be noticed
- Individually tested tools as per IEC 60900 at 10,000 V for safe working up to 1,000 volt
- Includes one Zyklop VDE ratchet, 12 sockets, 7 bit sockets with holding function for TORX® screws, 5 bit sockets with holding function for hexagonal socket screws, 2 extensions (75 mm and 150 mm long), one handle for Kraftform Kompakt VDE blades, one adapter blade (1/4" external hexagon to 9 mm external hexagon)
- Ratchet in extremely slim design; fine toothing with 80 teeth, short return angle of only 4.5° for easy working even in very confined spaces
- Sockets, bit sockets and extensions with increased safety thanks to a 2-component insulation with yellow insulation core under red outer insulation layer
- Plastic sleeve protects surfaces from damage
- 817 VDE handle for Kraftform Kompakt interchangeable blades
- One Kraftform Kompakt A VDE 712 i adapter blade (1/4" external hexagon to 9 mm external hexagon) for 1/4" sockets and bit sockets

Durable foam insert; two-coloured for quick identification of missing parts; suitable for the Tool Rebel roller cabinets. Equipped with: one Zyklop 8007 A VDE ratchet with reversing lever (1/4"), 12 Zyklop 8790 A sockets (1/4"), 7 Zyklop 8767 A HF bit sockets (1/4") with holding function for TORX® screws, 5 Zyklop 8740 A HF bit sockets (1/4") with holding function for hexagonal socket screws, 2 Zyklop extensions (1/4", 8794 LA VDE (150 mm long), 8794 SA VDE (91 mm long)), one 817 VDE bitholding screwdriver with 9 mm hexagon mounting for Wera Kraftform Kompakt VDE blades, one Kraftform Kompakt A VDE 712 i adapter blade, adapts from 9 mm hexagon to 1/4" square head, which also allows 1/4" sockets and bit sockets to be used with the 817 VDE bitholding screwdriver. All tools are individually tested as per IEC 60900. This guarantees safe working at voltages up to 1,000 V.

Web link

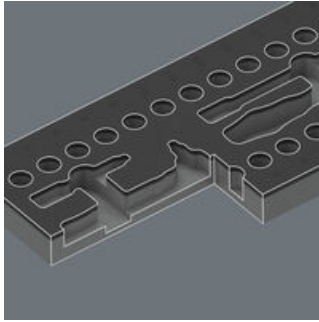
<https://www.wera.de/en/05150117001>

Wera - 9727

05150117001 - 4013288236777

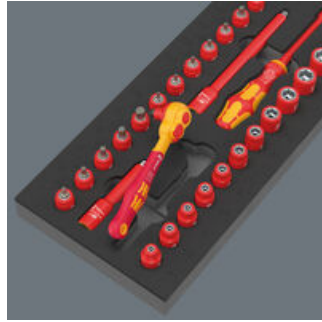


Safe storage and quick overview



The tools sit securely in the foam thanks to precise contour cutouts, but are easy to remove. The carefully designed arrangement of the tools ensures space-saving storage and quick access to each tool.

Two-coloured foam insert



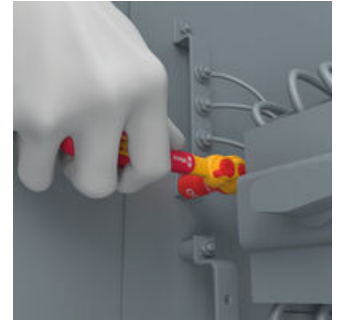
After removing the tool the light grey second foam becomes visible and therefore missing tools are quickly identified.

Individually tested



Safe working at voltages up to 1,000 V is guaranteed as all tools are individually tested at 10,000 V as per IEC 60900.

For small spaces



With its extremely slim design, fine toothing with 80 teeth and a low return angle of only 4.5°, the Zyklop VDE ratchet allows easy working even in very confined spaces.

Ball lock



The ball lock ensures sockets and accessories fit securely, providing increased safety during operation. A short press on the release button allows the tool to be changed quickly.

Switch lever



Switch lever for convenient change of direction.

Increased safety



Zyklop VDE-insulated sockets, bit sockets and extensions offer increased safety thanks to the yellow insulation core, which becomes visible if the outer red VDE insulation layer is damaged. 8767 A HF bit sockets with holding function for TORX® screws, 8740 A HF with holding function for hexagonal socket screws.


The 817 VDE bladeholding screwdriver



For Wera Kraftform Kompakt VDE interchangeable blades. With multi-component Kraftform handle for high working speeds and ergonomic screwdriving.

Set contents:

8007 A VDE Zyklop ratchet, insulated, with reversing lever, with 1/4" drive, 1/4" x 144 mm

 05004866001 1x 1/4" x 144 mm
**8790 A VDE Zyklop Socket, insulated, with 1/4" drive, 4.5 x 41 mm**

 05005929001 1x 4.5 x 41 mm

05005930001 1x 4 x 41 mm

05005931001 1x 5 x 41 mm

05005932001 1x 5.5 x 41 mm

05005933001 1x 6 x 41 mm

05005934001 1x 7 x 41 mm

05005935001 1x 8 x 41 mm


05005936001 1x 10 x 41 mm

05005937001 1x 11 x 41 mm

05005938001 1x 12 x 41 mm

05005939001 1x 13 x 41 mm

05005940001 1x 14 x 41 mm

**8767 A VDE HF TORX® Zyklop Bit socket, insulated, with 1/4" drive, with holding function, TX 10 x 46 mm**

 05005920001 1x TX 10 x 46 mm

05005921001 1x TX 15 x 46 mm


05005922001 1x TX 20 x 46 mm

05005923001 1x TX 25 x 46 mm

05005924001 1x TX 27 x 46 mm

05005925001 1x TX 30 x 46 mm

05005926001 1x TX 40 x 46 mm




**8740 A VDE HF Zyklop Bit socket, insulated, with 1/4" drive, with holding function for hexagonal socket screws, 3 x 46 mm**

 05005900001 1x 3 x 46 mm

05005901001 1x 4 x 46 mm

05005902001 1x 5 x 46 mm

05005903001 1x 6 x 46 mm

05005904001 1x 8 x 47 mm

**8794 LA Zyklop VDE extension, insulated, long, 1/4", 1/4" x 150 mm**

 05003301001 1x 1/4" x 150 mm
**8794 SA Zyklop VDE extension, insulated, short, 1/4", 1/4" x 91 mm**

 05005950001 1x 1/4" x 91 mm
**817 VDE Kraffform blade-holding handle, 9 x 98 mm**

 05003990001 1x 9 x 98 mm
**Kraffform Kompakt A VDE 712 i Adapter blade, insulated, for 1/4" sockets, 1/4" x 154 mm**

 05006642001 1x 1/4" x 154 mm


Web link

<https://www.wera.de/en/05150117001>

Wera - 9727

05150117001 - 4013288236777

Wera Werkzeuge GmbH

Korzter Straße 21-25

D-42349 Wuppertal

Tel: +49 (0)2 02 / 40 45-0

E-Mail: info@wera.de

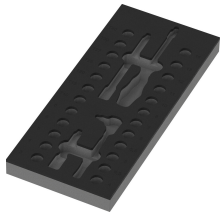
9727 Foam insert 8007 A VDE Zyklus VDE ratchet set 1, 1/4", 30 pieces



9827 Foam insert 8007 A VDE Zyklus VDE ratchet set 1, 1/4", without tools, 172 x 30 x 392 mm

05137316001¹⁾ 1x 172 x 30 x 392 mm

1) Attention: The foam insert does not fit in the previous model 05501051001 of the roller cabinet.



Attention: The foam insert does not fit in the previous model 05501051001 of the roller cabinet.

Web link
<https://www.wera.de/en/05150117001>

Wera - 9727
05150117001 - 4013288236777

Wera Werkzeuge GmbH
Korzerter Straße 21-25
D-42349 Wuppertal
Tel: +49 (0)2 02 / 40 45-0
E-Mail: info@wera.de