



EAN:	4013288232571	Size:	405x185x55 mm
Part number:	05150115001	Weight:	3012 g
Article number:	9725	Country of origin:	TW
		Customs tariff number:	82042000

- Durable foam insert, each tool has its own place; two-coloured, missing tools will quickly be noticed
- High-quality, durable foam insert without chemical vapours
- Robust Impaktor sockets for extremely high stress; for use with electric or pneumatic wrenches with 12.5 mm = 1/2" drive
- Long sockets for low lying couplings, also suitable for fitting, protruding thread rods in confined spaces
- Hexagon profile for precise and profile-friendly screwdriving at high power transmission
- With cross hole and ring socket to attach the safety pin and safety ring of machine operated tools
- With Take it easy tool finder: colour coding by size
- Width x height x depth: without tools 172 x 30 x 392 mm, with tools 172 x 48 x 392 mm

Durable foam insert; two-coloured for quick identification of missing parts; suitable for the Tool Rebel roller cabinet. Equipped with 11 Impaktor Deep 8790 C sockets, 1/2".

Web link

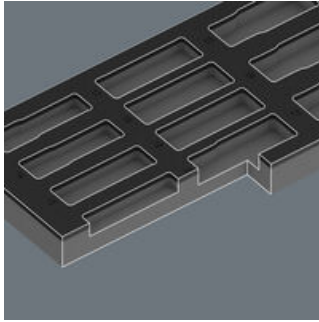
https://products.wera.de/en/new_products_autumn_2024_foam_inserts_for_roller_cabinet_foam_inserts_with_tools_9725.html

Wera - 9725
05150115001 - 4013288232571

Wera Werkzeuge GmbH
Korzerter Straße 21-25
D-42349 Wuppertal
Tel: +49 (0)2 02 / 40 45-0
E-Mail: info@wera.de

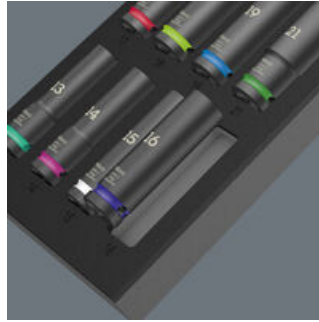
Foam inserts with tools

Safe storage and quick overview



The tools sit securely in the foam thanks to precise contour cutouts, but are easy to remove. The carefully designed arrangement of the tools ensures space-saving storage and quick access to each tool.

Two-coloured foam insert



After removing the tool the light grey second foam becomes visible and therefore missing tools are quickly identified.

For electric or pneumatic wrenches



The extremely robust forged design ensures higher-than-average service life of the Impaktor sockets even at extreme requirements.

Long design



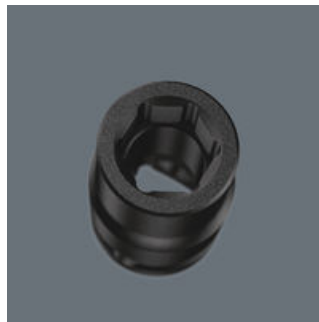
Thanks to the long design of the sockets, even couplings in tight spaces can be reached. Screwdriving at protruding thread rods can also be possible.

Cross hole and ring socket



Thanks to the hole and the ring socket, the tools can be held securely on the power tool with a safety pin or an O-ring.

Profile-friendly power transmission



The hexagon profile offers the transmission of high forces and loads the edges of the bolt or the screw head less than a double hexagon profile. Fine-toothed ratchets also make use of a double hexagon profile superfluous, even in confined spaces, thanks to their small return angle.

Take it easy tool finder system



Take it easy tool finder system - with profile and size colour-coding for quick and easy tool selection. Colour-coded system for hexagon drive screws (L-Keys, Zyklop bit sockets), external hex drive screws and nuts (Joker wrenches, Zyklop sockets and Zyklop bit sockets with holding function), and TORX® drive screws (L-Keys, Zyklop bit sockets).

Web link

https://products.wera.de/en/new_products_autumn_2024_foam_inserts_for_roller_cabinet_foam_inserts_with_tools_9725.html

Wera - 9725

05150115001 - 4013288232571

Wera Werkzeuge GmbH

Korzerter Straße 21-25

D-42349 Wuppertal

Tel: +49 (0)2 02 / 40 45-0

E-Mail: info@wera.de

9725 Foam insert Zyklop C, 1/2", Impaktor Deep socket set 1, 11 pieces

Foam inserts with tools



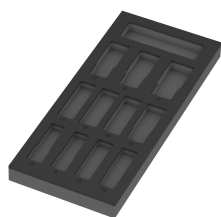
Set contents:

8790 C Impaktor Deep socket with 1/2" drive, 13 x 83 mm



05004830001	1x	13 x 83 mm
05004831001	1x	14 x 83 mm
05004832001	1x	15 x 83 mm
05004833001	1x	16 x 83 mm
05004834001	1x	17 x 83 mm
05004835001	1x	18 x 83 mm
05004836001	1x	19 x 83 mm
05004837001	1x	21 x 83 mm
05004838001	1x	22 x 83 mm
05004839001	1x	24 x 83 mm
05004840001	1x	27 x 83 mm

9825 Foam insert Zyklop C, 1/2", Impaktor Deep socket wrench insert set 1, empty, 172 x 30 x 392 mm



05137325001 ¹⁾	1x	172 x 30 x 392 mm
---------------------------	----	-------------------

1) Attention: The foam insert does not fit in the previous model 05501051001 of the roller cabinet.

Attention: The foam insert does not fit in the previous model 05501051001 of the roller cabinet.

Web link

https://products.wera.de/en/new_products_autumn_2024_foam_inserts_for_roller_cabinet_foam_inserts_with_tools_9725.html

Wera - 9725

05150115001 - 4013288232571

Wera Werkzeuge GmbH

Korzerter Straße 21-25

D-42349 Wuppertal

Tel: +49 (0)2 02 / 40 45-0

E-Mail: info@wera.de