



EAN: 4013288237477
Part number: 05150107001
Article number: 9716

Size: 405x185x55 mm
Weight: 711 g
Country of origin: CZ
Customs tariff number: 82054000

- Durable foam insert, each tool has its own place; two-coloured, missing tools will quickly be noticed
- High-quality, durable foam insert without chemical vapours
- Kraftform Micro screwdrivers
- Multi-component Kraftform Micro handle for fast and ergonomic screwdriving
- The Wera Black Point tip offers an exact fit and optimum corrosion protection
- Take it easy tool finder: colour coding according to profile and size
- Width x height x depth: without tools 172 x 30 x 392 mm, with tools 172 x 37 x 392 mm

Durable foam insert; two-coloured for quick identification of missing parts; suitable for the Tool Rebel roller cabinets. Equipped with 12 Kraftform Micro screwdrivers.

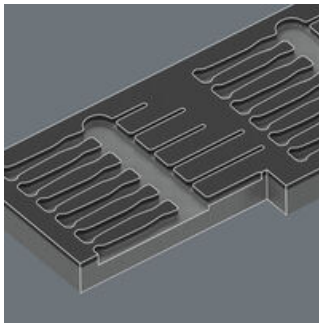


Web link
<https://www.wera.de/en/05150107001>

Wera - 9716
 05150107001 - 4013288237477

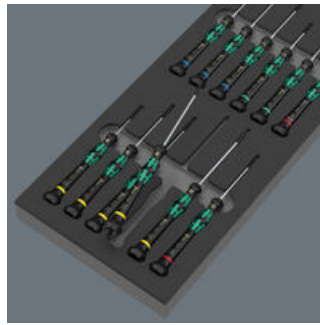
Wera Werkzeuge GmbH
 Korzter Straße 21-25
 D-42349 Wuppertal
 Tel: +49 (0)2 02 / 40 45-0
 E-Mail: info@wera.de

Safe storage and quick overview



The tools sit securely in the foam thanks to precise contour cutouts, but are easy to remove. The carefully designed arrangement of the tools ensures space-saving storage and quick access to each tool.

Two-coloured foam insert



After removing the tool the light grey second foam becomes visible and therefore missing tools are quickly identified.

Kraftform Micro handle



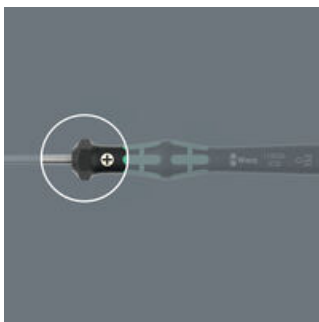
Multi-component screwdriver handle for ergonomic working.

The refined screwdriver for electronics technicians



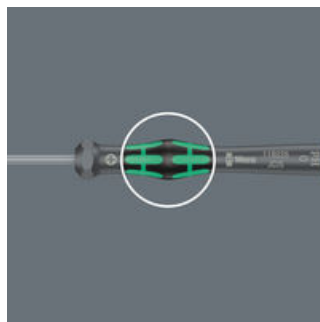
The Kraftform Micro, with its three zones and their specific arrangement, satisfies these requirements perfectly. The free-turning cap that provides support for the hand works with these advantages, enabling quick and easy precision work.

The precision zone



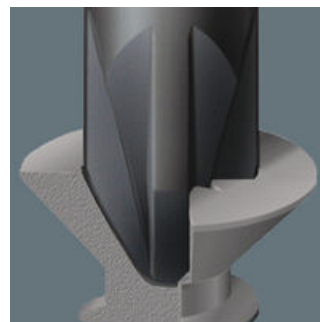
The precision zone directly above the blade gives the user a better feel for the right rotation angle during fine adjustment work.

The power zone



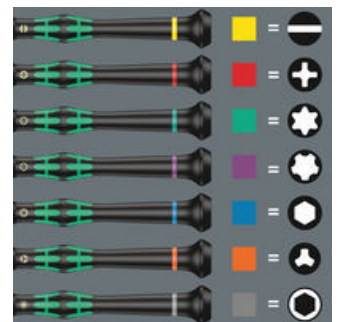
The power zone has integrated soft zones near the blade tip to ensure high torque transfer for loosening or tightening screws without losing contact with the screw.

Wera Black Point tip



The Wera Black Point tip and a refined hardening process ensure long service life of the tip, improved corrosion protection and an exact fit.

Take it easy Tool Finder



Screwdrivers with Take it easy tool finder: colour coding according to profile and size stamp.

Set contents:

2050 PH Screwdriver for Phillips screws for electronic applications, PH 00 x 60 mm



05118020001 ¹⁾	1x	PH 00 x 60 mm
05118022001 ²⁾	1x	PH 0 x 60 mm

1) Optimised for Asian PH screws
2) Size 0 modified according to JCIS 0 (Japanese Camera Industrial Standard)

2067 TORX® Screwdriver for TORX® screws for electronic applications, TX 5 x 40 mm



05118040001	1x	TX 5 x 40 mm
05118042001	1x	TX 6 x 40 mm

2054 Screwdriver for hexagon socket screws for electronic applications, 0.9 x 40 mm



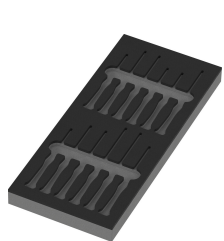
05118062001	1x	0.9 x 40 mm
05118066001	1x	1.5 x 60 mm
05118068001	1x	2 x 60 mm

2035 Screwdriver for slotted screws for electronic applications, 0.23 x 1.5 x 40 mm



05118002001	1x	0.23 x 1.5 x 40 mm
05118004001	1x	0.30 x 1.8 x 60 mm
05118006001	1x	0.40 x 2 x 60 mm
05118008001	1x	0.40 x 2.5 x 80 mm
05118010001	1x	0.50 x 3 x 80 mm

9816 Foam insert Kraftform Micro screwdriver set 2, without tools, 172 x 30 x 392 mm



05137318001 ¹⁾	1x	172 x 30 x 392 mm
---------------------------	----	-------------------

1) Attention: The foam insert does not fit in the previous model 05501051001 of the roller cabinet.

Attention: The foam insert does not fit in the previous model 05501051001 of the roller cabinet.

Web link

<https://www.wera.de/en/05150107001>

Wera - 9716

05150107001 - 4013288237477

Wera Werkzeuge GmbH

Korzter Straße 21-25

D-42349 Wuppertal

Tel: +49 (0)2 02 / 40 45-0

E-Mail: info@wera.de