



<b>EAN:</b>	4013288194473	<b>Size:</b>	305x130x71 mm
<b>Part number:</b>	05136461001	<b>Weight:</b>	473 g
<b>Article number:</b>	9412	<b>Country of origin:</b>	CN
		<b>Customs tariff number:</b>	42029298

- Robust material
- Strong hook and loop fastener system prevents unintentional opening and loss of the tool
- Compact design for space-saving storage
- Low weight for easy transport
- Compatible with Wera 2go

Robust box for space-saving tool storage; ideal for mobile use, as the material used is light and firm; for Joker Switch spanner; 11 loops; empty.

**Web link**

[https://products.wera.de/en/joker\\_joker\\_accessories\\_9412.html](https://products.wera.de/en/joker_joker_accessories_9412.html)

Wera - 9412  
05136461001 - 4013288194473

Wera Werkzeuge GmbH  
Korzter Straße 21-25  
D-42349 Wuppertal  
Tel: +49 (0)2 02 / 40 45-0  
E-Mail: [info@wera.de](mailto:info@wera.de)

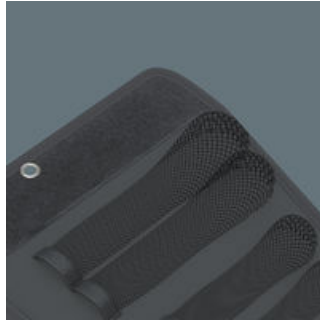
Joker Accessories

Robust, lightweight, rigid



The material used is distinguished by its high level of robustness. At the same time, the textile box is light and rigid. Even if the textile box falls down, the tools are well protected.

Bags made of netted cloth



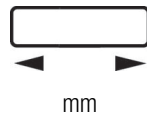
The net bags hold the tools securely and reliably. The size marking can be seen through the net.

Flexible thanks to hook and loop fastener strips

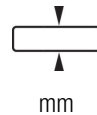


The textile box features a fleece zone at the back. Using the provided self-adhesive hook and loop fastener strips, the textile box can be attached to the Wera 2go components. Or to the wall, shelf or workshop trolley.

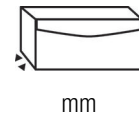
Further versions in this product family:



mm



mm



mm

05136461001	180	88.0	46.0
-------------	-----	------	------

Web link

[https://products.wera.de/en/joker\\_joker\\_accessories\\_9412.html](https://products.wera.de/en/joker_joker_accessories_9412.html)

Wera - 9412

05136461001 - 4013288194473

Wera Werkzeuge GmbH  
Korzter Straße 21-25

D-42349 Wuppertal

Tel: +49 (0)2 02 / 40 45-0

E-Mail: [info@wera.de](mailto:info@wera.de)