

EAN:	4013288223333	Size:	340x30x26 mm
Part number:	05136421001	Weight:	158 g
Article number:	9601	Country of origin:	CN
		Customs tariff number:	39269097

- Magnetic rail with secure socket mounting and yet easy removal (twist-to-unlock) for temporary attachment on wall, shelf or workshop trolley
- Smooth rotary mechanism for a secure hold and easy access of the tools
- Empty, for up to 10 sockets, 3/8"

One socket rail, empty. For up to 10 sockets and/or bit sockets with 3/8" drive. The rail allows temporary attachment to metallic surfaces and, with its twist-to-unlock function, ensures secure locking and unlocking of the sockets.

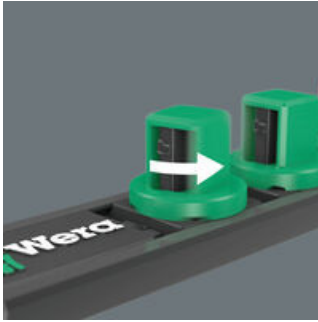
Web link
<https://www.wera.de/en/05136421001>

Wera - 9601
05136421001 - 4013288223333

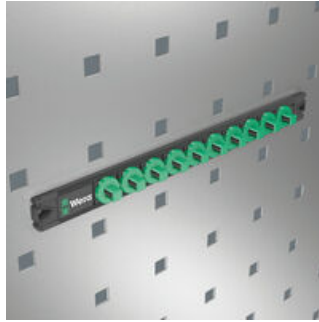
Wera Werkzeuge GmbH
Korzter Straße 21-25
D-42349 Wuppertal
Tel: +49 (0)2 02 / 40 45-0
E-Mail: info@wera.de

Twist-to-unlock mechanism

Magnetic

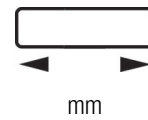
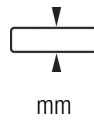


With its twist-to-unlock mechanism, the socket rail ensures easy access of the sockets. At the same time the sockets are held securely.



Thanks to the magnet, the rail is suitable for temporary attachment to the wall, shelf or workshop trolley.

Further versions in this product family:



05136421001	30.0	340.0
-------------	------	-------

Web link
<https://www.wera.de/en/05136421001>

Wera - 9601
 05136421001 - 4013288223333

Wera Werkzeuge GmbH
 Korzter Straße 21-25
 D-42349 Wuppertal
 Tel: +49 (0)2 02 / 40 45-0
 E-Mail: info@wera.de