



<b>EAN:</b>	4013288099914	<b>Size:</b>	165x60x11 mm
<b>Part number:</b>	05134399001	<b>Weight:</b>	25 g
<b>Article number:</b>	870/4 SB SiS	<b>Country of origin:</b>	CZ
		<b>Customs tariff number:</b>	82042000

- Adaptor for machine-operated nut spinner sockets
- 1/4" external square
- 1/4" hexagon drive (Wera connecting series 4)
- With ball

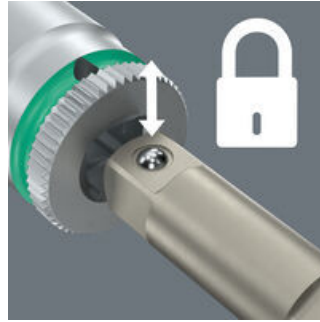
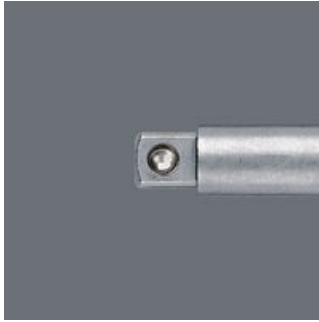
Tool shaft for manual nutsetter inserts; with ball. Output: 1/4" square head; 1/2" square head; drive 1/4" hexagon.

**Web link**  
<https://www.wera.de/en/05134399001>

Wera - 870/4 SB SiS  
05134399001 - 4013288099914

Wera Werkzeuge GmbH  
Korzter Straße 21-25  
D-42349 Wuppertal  
Tel: +49 (0)2 02 / 40 45-0  
E-Mail: [info@wera.de](mailto:info@wera.de)

With ball



With friction ball; for manual nut spinner sockets

**Web link**  
<https://www.wera.de/en/05134399001>

Wera - 870/4 SB SiS  
05134399001 - 4013288099914

**Set contents:**

**870/4 Adaptor for manual nut spinner sockets, 1/4" x 50 mm**



05311517001<sup>1)</sup> 1x 1/4" x 50 mm



1) With friction ball; for manual nut spinner sockets

**Web link**

<https://www.wera.de/en/05134399001>

Wera - 870/4 SB SiS  
05134399001 - 4013288099914

Wera Werkzeuge GmbH  
Korzter Straße 21-25  
D-42349 Wuppertal  
Tel: +49 (0)2 02 / 40 45-0  
E-Mail: [info@wera.de](mailto:info@wera.de)