

8002 C Koloss All Inclusive Set with ½" drive, 5 pieces

Koloss



EAN:	4013288162403	Size:	365x135x62 mm
Part number:	05133862001	Weight:	1755 g
Article number:	8002 C KOLOSS All Inclusive Set	Country of origin:	CZ
		Customs tariff number:	82041200

- For loads of at least 600 Newton metres
- Push-through square drive for right/left switchover
- Including hammer function
- Multi-component Kraftform handle optimised to withstand pressure, impact and tensile loads
- Fine-pitched ratchet mechanism, small return angle of 6°

The ratchet that can also be safely and officially used as a hammer. The KOLOSS is a reversible, heavy-duty ratchet that can be used with a load of at least 600 Newton metres. The dual ratchet teeth and the minimum return angle of only 6° ensure rapid and precise screwdriving even in confined situations. And the best thing: absolutely no impact on the hammer faces, however hard, can destroy the ratchet mechanism. Multi-component Kraftform handle optimised to withstand pressure, impact and tensile loads; take-up for KOLOSS extension 8780 C and KOLOSS centring pin 8781 C at end of handle. Also included in the set: 1 pad to protect materials and surface areas, 1 Koloss extension for the transfer of even more torque, 1 unlocking pin and 1 holster - so the Koloss can always be at hand.

Web link

https://products.wera.de/en/ratchets_and_accessories_koloss_8002_c_koloss_all_inclusive_set.html

Wera - 8002 C KOLOSS All Inclusive Set
05133862001 - 4013288162403

Wera Werkzeuge GmbH
Korzter Straße 21-25
D-42349 Wuppertal
Tel: +49 (0)2 02 / 40 45-0
E-Mail: info@wera.de

Typical fields of application



The heavy-duty ratchet that can also be safely used as a hammer.



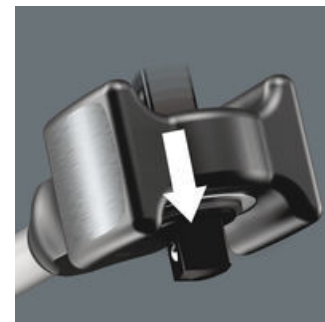
Typical fields of application are mechanical engineering, boatbuilding, mining, aircraft construction, bridge building, commercial vehicle construction and maintenance, railway and road construction and maintenance, industrial plant and equipment construction, high-bay warehouse construction, petroleum industry and many more.

Square drive



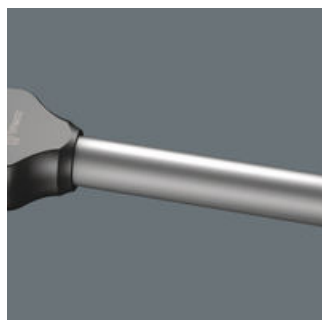
Non-removable sealed and hardened square drive for tough jobs.

Changing ratchet direction



Changing the ratchet direction using a hardened push-through square drive ensures great resilience, since there is no susceptible switching mechanism that could be damaged by hammer blows. This is far more robust than a right/left switch.

Tubular shaft



Tubular shaft minimises impact vibrations.

Dry-fined hammer face



Used with rubber pad attachments to protect materials and surfaces.

Drop-forged hammer head



The drop-forged hammer head is permanently pinned to the shaft in a form-fit joint. This guarantees an almost non-detachable positioning of the hammer head on the handle.

Dual ratchet teeth



Gives the robust 30 saw teeth the precision engineering effect of 60 fine teeth with a 6° return angle.

Web link

https://products.wera.de/en/ratchets_and_accessories_koloss_8002_c_koloss_all_inclusive_set.html

Wera - 8002 C KOLOSS All Inclusive Set
05133862001 - 4013288162403

Wera Werkzeuge GmbH
Korzter Straße 21-25
D-42349 Wuppertal
Tel: +49 (0)2 02 / 40 45-0
E-Mail: info@wera.de

8002 C Koloss All Inclusive Set with 1/2" drive, 5 pieces

Koloss

Set contents:

8002 C Koloss 1/2", 1/2" x 341 mm

1x 1/2" x 341 mm



8782 C Koloss pad set, # 2 x 50 mm

05003697001

1x # 2 x 50 mm



8780 C Koloss extension, 341 x 137 mm

05003695001

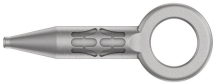
1x 341 x 137 mm



8000 E Unlocking pin, 40.5 mm

05136400001

1x 40.5 mm



Holster, 175 x 75 mm

1x 175 x 75 mm



Web link

https://products.wera.de/en/ratchets_and_accessories_koloss_8002_c_koloss_all_inclusive_set.html

Wera - 8002 C KOLOSS All Inclusive Set
05133862001 - 4013288162403

Wera Werkzeuge GmbH
Korzter Straße 21-25
D-42349 Wuppertal
Tel: +49 (0)2 02 / 40 45-0
E-Mail: info@wera.de