



EAN:	4013288111678	Size:	153x117x40 mm
Part number:	05104650001	Weight:	383 g
Article number:	846/8	Country of origin:	CZ
		Customs tariff number:	82075060

- Ideal for mobile repair and assembly work
- Rapid, uncomplicated change between drill, countersinking or screwdriving bit
- 1/4" drive suitable for power screwdrivers
- For deburring, chamfering and countersinking
- In practical and robust plastic box

8-piece countersink bit set in a stable plastic box for deburring, chamfering and countersinking. The finely-tuned material elasticity provides for great durability. Perfect chip removal and a low tilt risk ensure pleasant working. Cutting section as per DIN 335-C, 90° with 3 cutters. High quality, ergonomic bit holder equipped with a magnet. The Rapidaptor quick-release chuck ensures rapid bit change without any extra tools. 1/4" hexagon, suitable for holders with take-up as per DIN ISO 1173-D 6.3.

Web link

<https://www.wera.de/en/05104650001>

Wera - 846/8

05104650001 - 4013288111678

Wera Werkzeuge GmbH

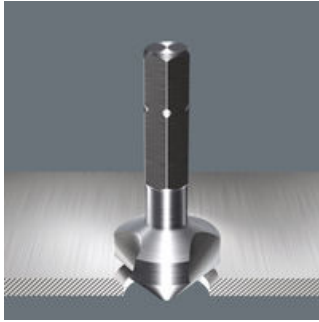
Korzter Straße 21-25

D-42349 Wuppertal

Tel: +49 (0)2 02 / 40 45-0

E-Mail: info@wera.de

3-flute countersink bits



3-flute countersink bits, 90°
 Application: Deburring, chamfering and countersinking
 1/4" drive suitable for holders as per DIN 3126-D 6.3 (ISO 1173)
 Hexagon shaft for very high torque transfer
 HSS = high speed steel
 Finely adjusted material elasticity for long service life
 3 tips
 Excellent centring properties
 Straightforward cutting
 Perfect chip removal
 Low jamming risk
 Precise return control
 High corrosion protection

Kraftform



The basic idea for the prototype of the Kraftform handle - that the hand should dictate the design - has, right through to today, proved to be correct. In cooperation with the internationally recognised Fraunhofer IAO Institute, Wera developed a screwdriver handle designed to match the shape of the human hand as long ago as the 1960s. After a long development phase, the Wera Kraftform handle was launched to the market in 1968. It has been optimised through the years with new technologies, but has kept its proven shape. After all, the human hand has not changed either.

Rapidaptor holder



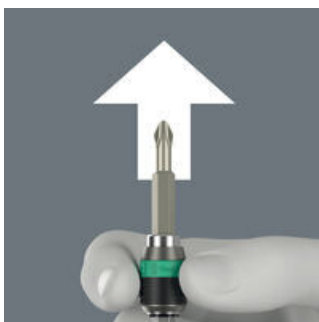
Lightning-fast bit change without any extra tools. One-handed operation. With fast-rotating sleeve for easy wielding of the screwdriver.

Rapid-in and self-lock



The bit can be pushed into the adaptor without moving the sleeve. The lock is activated automatically as soon as the bit is applied to the screw. Bits are held securely and wobble-free.

Rapid-out



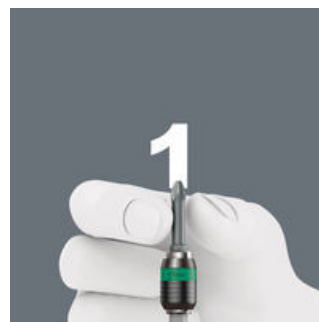
Simply push the sleeve forward to change the bit. The spring mechanism lifts the bit off the magnet and unlocks the tool. The bit can be easily removed. The rapid-out function makes it easy to remove even the smallest bits without extra tools.

Chuck-all



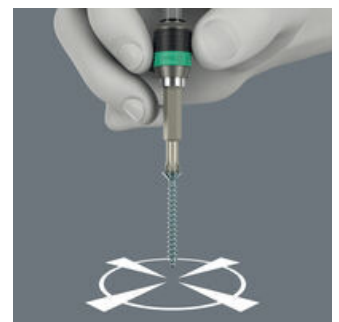
The Rapidaptor quick-release chucks hold 1/4" DIN ISO 1173-C 6,3 and E 6,3 as well as Wera series 1 and 4 bits.

Single-hand function



Every function of the Rapidaptor quick-release chuck, such as inserting or releasing bits, can be carried out with one hand. This is faster, more economical and more ergonomic. There are no unnecessary manoeuvres.

Rapid-spin



The free-turning sleeve allows screw steadying at the start of the screwdriving process. This makes it easier to apply the tool to the screw and prevents slipping. It can also be used as a short extension for 1/4" applications e.g. in combination with the Wera Zyklus Ratchets.

Web link
<https://www.wera.de/en/05104650001>

Wera - 846/8
 05104650001 - 4013288111678

Wera Werkzeuge GmbH
 Korzter Straße 21-25
 D-42349 Wuppertal
 Tel: +49 (0)2 02 / 40 45-0
 E-Mail: info@wera.de

Set contents:

816 R Bitholding screwdriver with Rapidaptor quick-release chuck, 1/4" x 119 mm



05051462001 1x 1/4" x 119 mm



888/4/1 K Rapidaptor Universal Bit Holder, 1/4" x 50 mm



05052500001 1x 1/4" x 50 mm



846 3-flute Countersink Bit, 6.30 x 31 mm



05104630001	1x	6.30 x 31 mm
05104631001	1x	8.30 x 31 mm
05104632001	1x	10.40 x 34 mm
05104633001	1x	12.40 x 35 mm
05104634001	1x	16.50 x 40 mm
05104635001	1x	20.50 x 41 mm



Web link

<https://www.wera.de/en/05104650001>

Wera - 846/8

05104650001 - 4013288111678

Wera Werkzeuge GmbH

Korzter Straße 21-25

D-42349 Wuppertal

Tel: +49 (0)2 02 / 40 45-0

E-Mail: info@wera.de