

7782 C Ratchet insert, reversible, 14x18 mm, 14x18 x 1/2" x 66 mm

Insert tools with ratchet functionality



|                        |               |                               |             |
|------------------------|---------------|-------------------------------|-------------|
| <b>EAN:</b>            | 4013288196552 | <b>Size:</b>                  | 67x43x42 mm |
| <b>Part number:</b>    | 05078707001   | <b>Weight:</b>                | 273 g       |
| <b>Article number:</b> | 7782 C        | <b>Country of origin:</b>     | TW          |
|                        |               | <b>Customs tariff number:</b> | 82079099    |

- For torque wrenches of the Click-Torque X series with 14x18 mm holder
- For 1/2" square socket wrench inserts and 1/2" connecting parts with square drive
- Fine tothing with 72 teeth
- Easy switching by knob
- Socket lock by push button

Ratchet insert, reversible, for 1/2" square socket wrench inserts and 1/2" connecting parts with square drive; for torque wrenches of the Click-Torque X series with 14x18 mm holder.

**Web link**

[https://products.wera.de/en/torque\\_tools\\_series\\_click-torque\\_wrenches\\_series\\_insert\\_tools\\_insert\\_tools\\_with\\_ratchet\\_functionality\\_7782\\_c.html](https://products.wera.de/en/torque_tools_series_click-torque_wrenches_series_insert_tools_insert_tools_with_ratchet_functionality_7782_c.html)

Wera - 7782 C  
05078707001 - 4013288196552

Wera Werkzeuge GmbH  
Korzter Straße 21-25  
D-42349 Wuppertal  
Tel: +49 (0)2 02 / 40 45-0  
E-Mail: [info@wera.de](mailto:info@wera.de)

Insert tools with ratchet functionality

Drive 14x18 mm

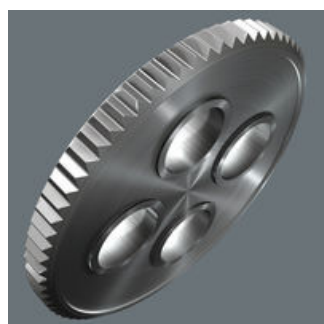
Small return angle

1/2" external square

Easy switching



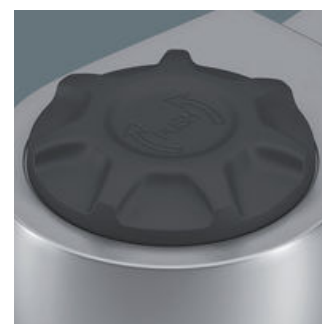
For torque wrenches of the Click-Torque X series with 14x18 mm holder.



Fine-pitched with 72 teeth for a return angle of only 5°



For 1/2" square socket wrench inserts and 1/2" connecting parts with square drive.



Easy switching by knob.

Secure socket locking

Chrome vanadium steel



Safe socket lock via push button



The chrome-vanadium steel version makes the plug-in tools suitable for heavy loads.

Further versions in this product family:

|             | mm    | inch | mm   | mm   | mm   | mm   | mm   |
|-------------|-------|------|------|------|------|------|------|
| 05078707001 | 14x18 | 1/2" | 20.0 | 66.0 | 41.0 | 42.0 | 23.0 |

Web link

[https://products.wera.de/en/torque\\_tools\\_series\\_click-torque\\_wrenches\\_series\\_insert\\_tools\\_insert\\_tools\\_with\\_ratchet\\_functionality\\_7782\\_c.html](https://products.wera.de/en/torque_tools_series_click-torque_wrenches_series_insert_tools_insert_tools_with_ratchet_functionality_7782_c.html)

Wera - 7782 C

05078707001 - 4013288196552

Wera Werkzeuge GmbH

Korzter Straße 21-25

D-42349 Wuppertal

Tel: +49 (0)2 02 / 40 45-0

E-Mail: [info@wera.de](mailto:info@wera.de)