

7772 C Ratchet insert, reversible, 9x12 mm, 9x12 x 1/2" x 58 mm

Insert tools with ratchet functionality



EAN:	4013288196453	Size:	122x83x43 mm
Part number:	05078637001	Weight:	240 g
Article number:	7772 C	Country of origin:	TW
		Customs tariff number:	82079099

- For torque wrenches of the Click-Torque X series with 9x12 mm holder
- For 1/2" square socket wrench inserts and 1/2" connecting parts with square drive
- Fine tothing with 72 teeth
- Easy switching by knob
- Socket lock by push button

Ratchet insert, reversible, for 1/2" square socket wrench inserts and 1/2" connecting parts with square drive; for torque wrenches of the Click-Torque X series with 9x12 mm holder.

Web link

https://products.wera.de/en/torque_tools_series_click-torque_wrenches_series_insert_tools_insert_tools_with_ratchet_functionality_7772_c.html

Wera - 7772 C
05078637001 - 4013288196453

Wera Werkzeuge GmbH
Korzter Straße 21-25
D-42349 Wuppertal
Tel: +49 (0)2 02 / 40 45-0
E-Mail: info@wera.de

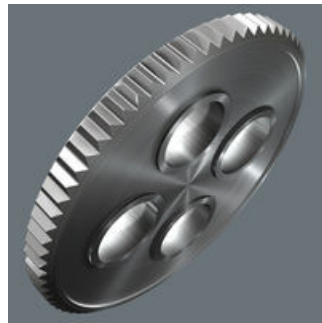
Insert tools with ratchet functionality

Drive 9x12 mm



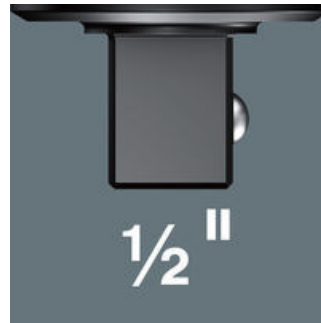
For torque wrenches of the Click-Torque X series with 9x12 mm holder.

Small return angle



Fine-pitched with 72 teeth for a return angle of only 5°

1/2" external square



For 1/2" square socket wrench inserts and 1/2" connecting parts with square drive.

Easy switching



Easy switching by knob.

Secure socket locking





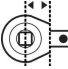



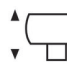
Safe socket lock via push button

Chrome vanadium steel



The chrome-vanadium steel version makes the plug-in tools suitable for heavy loads.

Further versions in this product family:

							
	mm	inch	mm	mm	mm	mm	mm
05078637001	9x12	1/2"	20.0	58.0	41.0	42.0	23.0

Web link

https://products.wera.de/en/torque_tools_series_click-torque_wrenches_series_insert_tools_insert_tools_with_ratchet_functionality_7772_c.html

Wera - 7772 C

05078637001 - 4013288196453

Wera Werkzeuge GmbH

Korzter Straße 21-25

D-42349 Wuppertal

Tel: +49 (0)2 02 / 40 45-0

E-Mail: info@wera.de