

Click-Torque XP 2 pre-set adjustable torque wrench for insert tools, 10-50 Nm, 10 Nm, 9x12 x 10.0 Nm x 10-50 Nm
Click-Torque pre-set adjustable torque wrenches for insert tools



EAN:	4013288206176	Size:	290x50x50 mm
Part number:	05075671001	Weight:	448 g
Article number:	Click-Torque XP 2	Country of origin:	TW
		Customs tariff number:	82041100

- Pre-set click torque wrench in unmistakable Wera design
- Audible and tactile release mechanism when the set torque value is reached
- Pre-set torque values can be changed within the metered range in the test laboratory
- Measuring range: 10-50 Nm; Precise to +/- 2% as per DIN EN ISO 6789-1:2017-07
- With square socket (9x12 mm) for interchangeable plug-in tools; clockwise and anti-clockwise torque-control

Torque wrench with pre-set torque value for all applications where the same torque and repeat accuracy is required. The torque value can be changed within the metered range. The robust release mechanism guarantees a clearly audible and tactile trigger signal when the set torque value is reached. Square socket for interchangeable plug-in tools for clockwise and anti-clockwise torque-control. A presetting which deviates from this value to a desired torque value within the specified metered range is possible on request.

Web link

https://products.wera.de/en/torque_tools_series_click-torque_wrenches_click-torque_pre-set_adjustable_torque_wrenches_for_insert_tools_click-torque_xp_2.html

Wera - Click-Torque XP 2
05075671001 - 4013288206176

Wera Werkzeuge GmbH
Korzter Straße 21-25
D-42349 Wuppertal
Tel: +49 (0)2 02 / 40 45-0
E-Mail: info@wera.de

Click-Torque XP 2 pre-set adjustable torque wrench for insert tools, 10-50 Nm, 10 Nm, 9x12 x 10.0 Nm x 10-50 Nm
Click-Torque pre-set adjustable torque wrenches for insert tools



Click-Torque Wrench series

Pre-set click torque wrenches

Drive 9x12 mm

Exact



We wanted working with torque wrenches to be simple and accurate which is why we developed the Click-Torque wrenches. With the ability to set and save the default values and with the unmistakable, robust Wera design, these torque wrenches are the ideal tools for all bolting applications that require torque-controlled tightening (clockwise torque wrenches) and tightening and loosening (torque wrenches for insert tools).

The Click-Torque XP torque wrenches are provided with pre-set torque values. These tools are ideal for all applications where the same torque and repeat accuracy is required.

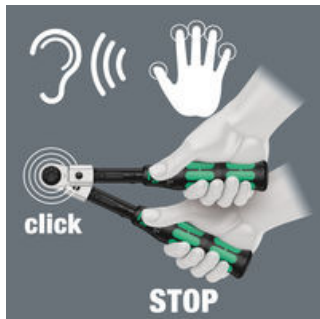
For 9x12 mm interchangeable insert tools.

Precise to $\pm 2\%$ as per DIN EN ISO 6789-1:2017-07.

Release mechanism

For right and left direction

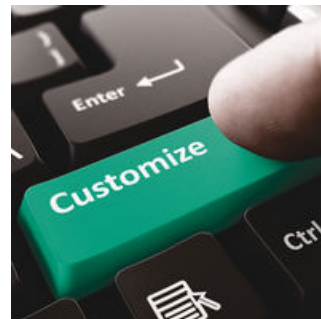
Customised pre-setting



When the set torque value is reached, an audible and tactile mechanism triggers.



The Click-Torque wrenches for insert tools are suitable for clockwise and counterclockwise uses.



The Click-Torque XP torque wrenches with a pre-set torque value can be set to any value within the specified metered range in the test laboratory.

Web link

https://products.wera.de/en/torque_tools_series_click-torque_wrenches_click-torque_pre-set_adjustable_torque_wrenches_for_insert_tools_click-torque_xp_2.html

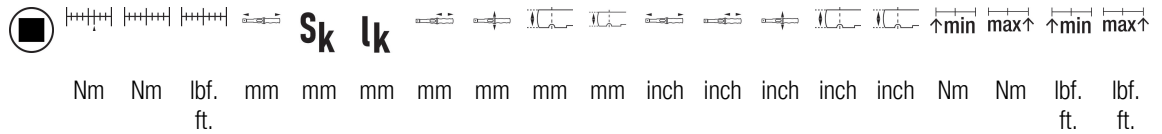
Wera - Click-Torque XP 2
05075671001 - 4013288206176

Wera Werkzeuge GmbH
Korzter Straße 21-25
D-42349 Wuppertal
Tel: +49 (0)2 02 / 40 45-0
E-Mail: info@wera.de

Click-Torque XP 2 pre-set adjustable torque wrench for insert tools, 10-50 Nm, 10 Nm, 9x12 x 10.0 Nm x 10-50 Nm
Click-Torque pre-set adjustable torque wrenches for insert tools



Further versions in this product family:



	Nm	Nm	lbf. ft.	mm	mm	mm	mm	mm	mm	mm	mm	inch	inch	inch	inch	inch	Nm	Nm	lbf. ft.	lbf. ft.
05075671001 ¹⁾	9x1 2	10.0	10- 50	8-3 6	262	17.5	225.	137	35	24	20	10 5 /16"	5 25 /64"	1 3/8"	15/1 6"	25/3 2"	10.0	50.0	8.0	36.0
05075671010 ^{2),1)}	9x1 2	10.0	10- 50	8-3 6	262	17.5	225.	137	35	24	20	10 5 /16"	5 25 /64"	1 3/8"	15/1 6"	25/3 2"	10.0	50.0	8.0	36.0

1) S_k = Actual dimension of the test attachment; l_k = Distance from the force application point to the test device axis

2) Any presetting which differs from this value, can be set to a desired torque value within the specified metered range upon request. The desired settings can be made in the following units: Nm, kgf. m, lbf. ft., ozf. in., dN. m, kgf. cm, lbf. in, in. oz, cN. m, gf. m, ft. lb, gf. cm, in. lb.

Web link

https://products.wera.de/en/torque_tools_series_click-torque_wrenches_click-torque_pre-set_adjustable_torque_wrenches_for_insert_tools_click-torque_xp_2.html

Wera - Click-Torque XP 2
05075671001 - 4013288206176

Wera Werkzeuge GmbH
Korzter Straße 21-25
D-42349 Wuppertal
Tel: +49 (0)2 02 / 40 45-0
E-Mail: info@wera.de