

Click-Torque X 7 torque wrench for insert tools, 10-100 Nm, 14x18 x 10-100 Nm



Click-Torque adjustable torque wrenches for insert tools



EAN:	4013288229335	Size:	430x55x55 mm
Part number:	05075657001	Weight:	1126 g
Article number:	Click-Torque X 7	Country of origin:	TW
		Customs tariff number:	82041100

- For 14x18 mm interchangeable insert tools
- Easy setting and saving of the desired torque value with audible and tactile clicks when reaching the scale values
- Audible and tactile release mechanism when the set torque value is reached
- Measuring range: 10-100 Nm; precision $\pm 4\%$ as per DIN EN ISO 6789-1:2017-07
- Very robust design with ergonomic 2-component handle suitable for right and left-handed use
- The Click-Torque collar is placed around the tube of the Wera Click-Torque torque wrench. It prevents the handle from touching the ground. Dirt and damage are avoided. Also serves as "anti-roll protection".
- The laser-engraved, abrasion-proof QR code makes it easier to determine the correct torque value depending on the torque wrench and insert tool used

Click-Torque wrench in the unmistakable, robust Wera design with high accuracy as per DIN EN ISO 6789-1: 2017-07. Easy setting and saving of the default value. The audible and tactile clicks on reaching the scale values also facilitate the safe setting of the desired torque value. The robust release mechanism guarantees a clearly audible and tactile release signal when the set torque is reached. For right and left-hand use and with square insert 14x18mm for insert tools.

Web link

https://products.wera.de/en/torque_tools_series_click-torque_wrenches_click-torque_adjustable_torque_wrenches_for_insert_tools_click-torque_x_7.html

Wera - Click-Torque X 7
05075657001 - 4013288229335

Wera Werkzeuge GmbH
Korzter Straße 21-25
D-42349 Wuppertal
Tel: +49 (0)2 02 / 40 45-0
E-Mail: info@wera.de

Click-Torque adjustable torque wrenches for insert tools

Simple and error-free determination of the torque value



Click-Torque X 7 torque wrench with mounting for exchangeable insert tools 14x18 mm



The laser-engraved, abrasion-proof QR code makes it easier to determine the correct torque value depending on the torque wrench and insert tool used. Simply scan with your smartphone and tablet (if available, both QR codes: Torque wrench and insert tool). A website opens automatically which recognizes the scanned tools (no app needed!). Then enter the required torque value; the corrected value is determined automatically. No need to use formulas/calculations.

Drive 14x18 mm



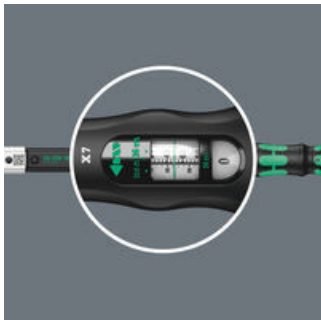
For torque wrenches of the Click-Torque X series with 14x18 mm holder.

Exact



Precise to $\pm 4\%$ as per DIN EN ISO 6789-1:2017-07.

Simple and safe



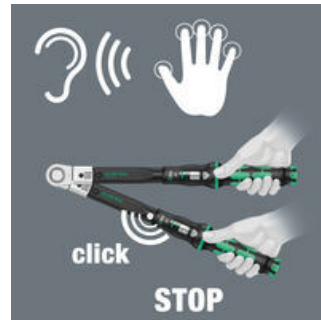
Easy setting and saving of the desired torque value; readable on the main and fine scales.

Simple setting



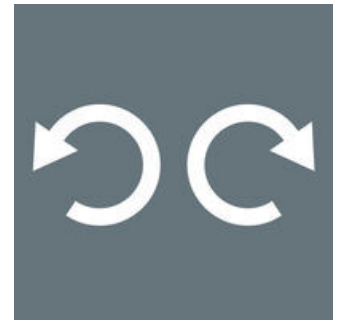
With audible and tactile clicks when adjusting the scale values.

Release mechanism



When the set torque value is reached, an audible and tactile mechanism triggers.

For right and left direction



The Click-Torque wrenches for insert tools are suitable for clockwise and counterclockwise uses.

Web link

https://products.wera.de/en/torque_tools_series_click-torque_wrenches_click-torque_adjustable_torque_wrenches_for_insert_tools_click-torque_x_7.html

Wera - Click-Torque X 7
05075657001 - 4013288229335

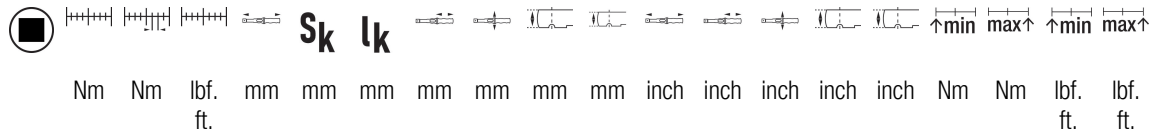
Wera Werkzeuge GmbH
Korzter Straße 21-25
D-42349 Wuppertal
Tel: +49 (0)2 02 / 40 45-0
E-Mail: info@wera.de

Click-Torque X 7 torque wrench for insert tools, 10-100 Nm, 14x18 x 10-100 Nm



Click-Torque adjustable torque wrenches for insert tools

Further versions in this product family:



	Nm	Nm	lbf. ft.	mm	mm	mm	mm	mm	mm	mm	mm	inch	inch	inch	inch	inch	Nm	Nm	lbf. ft.	lbf. ft.		
05075657001 ¹⁾	14x 18	10- 100	0.5 3	8-7 3	395	25.5	343. 0	140	47	29	20	14 1/64	4 /64"	5 /32"	33 /64"	1 27	1 9/25	3 /3	10.0	100. 0	8.0	73.0

1) S_k = Actual dimension of the test attachment; l_k = Distance from the force application point to the test device axis

Web link

https://products.wera.de/en/torque_tools_series_click-torque_wrenches_click-torque_adjustable_torque_wrenches_for_insert_tools_click-torque_x_7.html

Wera - Click-Torque X 7
05075657001 - 4013288229335

Wera Werkzeuge GmbH
Korzter Straße 21-25
D-42349 Wuppertal
Tel: +49 (0)2 02 / 40 45-0
E-Mail: info@wera.de