

## Click-Torque X 6 torque wrench for insert tools, 80-400 Nm, 14x18 x 80-400 Nm

Click-Torque adjustable torque wrenches for insert tools



<b>EAN:</b>	4013288193827	<b>Size:</b>	665x47x47 mm
<b>Part number:</b>	05075656001	<b>Weight:</b>	1960 g
<b>Article number:</b>	Click-Torque X 6	<b>Country of origin:</b>	TW
		<b>Customs tariff number:</b>	82041100

- For 14x18 mm interchangeable insert tools
- Easy setting and saving of the desired torque value with audible and tactile clicks when reaching the scale values
- Audible and tactile release mechanism when the set torque value is reached
- Measuring range:80-400 Nm; precise to  $\pm 3\%$  as per DIN EN ISO 6789-1:2017-07
- Very robust design with ergonomic 2-component handle suitable for right and left-handed use

Click-Torque wrench in the unmistakable, robust Wera design with high accuracy as per DIN EN ISO 6789-1: 2017-07. Easy setting and saving of the default value. The audible and tactile clicks on reaching the scale values also facilitate the safe setting of the desired torque value. The robust release mechanism guarantees a clearly audible and tactile release signal when the set torque is reached. For right and left-hand use and with square insert 14x18mm for insert tools.



### Web link

[https://products.wera.de/en/torque\\_tools\\_series\\_click-torque\\_wrenches\\_click-torque\\_adjustable\\_torque\\_wrenches\\_for\\_insert\\_tools\\_click-torque\\_x\\_6.html](https://products.wera.de/en/torque_tools_series_click-torque_wrenches_click-torque_adjustable_torque_wrenches_for_insert_tools_click-torque_x_6.html)

Wera - Click-Torque X 6  
05075656001 - 4013288193827

Wera Werkzeuge GmbH  
Korzter Straße 21-25  
D-42349 Wuppertal  
Tel: +49 (0)2 02 / 40 45-0  
E-Mail: [info@wera.de](mailto:info@wera.de)

Click-Torque Wrench series

Drive 14x18 mm

Exact



We wanted working with torque wrenches to be simple and accurate which is why we developed the Click-Torque wrenches. With the ability to set and save the default values and with the unmistakable, robust Wera design, these torque wrenches are the ideal tools for all bolting applications that require torque-controlled tightening (clockwise torque wrenches) and tightening and loosening (torque wrenches for insert tools).

For torque wrenches from the Click-Torque X series with 14x18 mm mounting.

Precision of  $\pm 3\%$  as per DIN EN ISO 6789-1:2017-07.

Easy and safe

Setting with Speed

Release mechanism

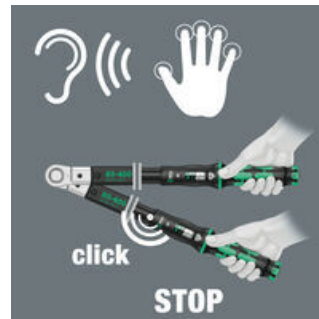
For right and left direction



Easy setting and saving of the desired torque value; easy to read on main and fine scales.



With audible and tactile locking when the scale values are reached.



On reaching the desired torque value, an audible and tactile mechanism is triggered.



The Click-Torque wrenches for insert tools are suitable for clockwise and counterclockwise uses.

Web link

[https://products.wera.de/en/torque\\_tools\\_series\\_click-torque\\_wrenches\\_click-torque\\_adjustable\\_torque\\_wrenches\\_for\\_insert\\_tools\\_click-torque\\_x\\_6.html](https://products.wera.de/en/torque_tools_series_click-torque_wrenches_click-torque_adjustable_torque_wrenches_for_insert_tools_click-torque_x_6.html)

Wera - Click-Torque X 6  
05075656001 - 4013288193827

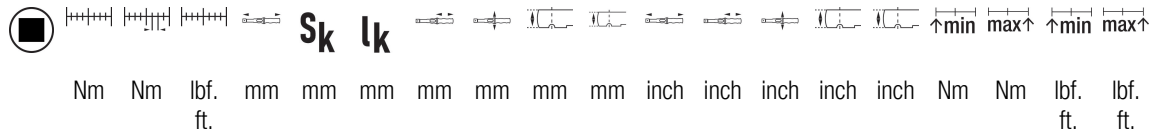
Wera Werkzeuge GmbH  
Korzter Straße 21-25  
D-42349 Wuppertal  
Tel: +49 (0)2 02 / 40 45-0  
E-Mail: info@wera.de

# Click-Torque X 6 torque wrench for insert tools, 80-400 Nm, 14x18 x 80-400 Nm



Click-Torque adjustable torque wrenches for insert tools

Further versions in this product family:



	Nm	Nm	lbf. ft.	mm	mm	mm	mm	mm	mm	mm	mm	inch	inch	inch	inch	inch	Nm	Nm	lbf. ft.	lbf. ft.
05075656001 <sup>1)</sup>	14x 18	80- 400	1.0	60- 295	665	25.5	615. 0	140	47	32	26	25 2 5/32	5 33 /64"	1 27 /32"	1 17 /64"	1 1/ 32"	80.0	400.	60.0	295. 0

1) S<sub>k</sub> = Actual dimension of the test attachment; l<sub>k</sub> = Distance from the force application point to the test device axis

### Web link

[https://products.wera.de/en/torque\\_tools\\_series\\_click-torque\\_wrenches\\_click-torque\\_adjustable\\_torque\\_wrenches\\_for\\_insert\\_tools\\_click-torque\\_x\\_6.html](https://products.wera.de/en/torque_tools_series_click-torque_wrenches_click-torque_adjustable_torque_wrenches_for_insert_tools_click-torque_x_6.html)

Wera - Click-Torque X 6  
05075656001 - 4013288193827

Wera Werkzeuge GmbH  
Korzter Straße 21-25  
D-42349 Wuppertal  
Tel: +49 (0)2 02 / 40 45-0  
E-Mail: info@wera.de