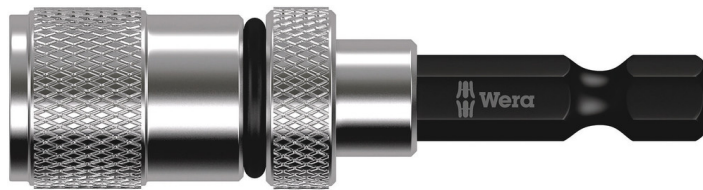


Bit holder with Adjustable Depth-Control Stop



<b>EAN:</b>	4013288178725	<b>Size:</b>	165x60x23 mm
<b>Part number:</b>	05073210001	<b>Weight:</b>	33 g
<b>Article number:</b>	896/4/1 SB SiS	<b>Country of origin:</b>	TW
		<b>Customs tariff number:</b>	84661038

- Aluminium sleeve, strong permanent magnet and spacer
- Suitable for the take-up of bits with 1/4" hex head drive
- Screwdriving depth can be infinitely adjusted
- Allows the flush-mounting of screws
- Fits power screwdrivers with take-up as per DIN ISO 1173-F 6.3

High quality spacer out of aluminium: the screwdriving depth can be infinitely adjusted and allows the flush-mounting of screws.

**Bit holder with adjustable depth stop**



The screw installation depth can be infinitely adjusted and allows the desired degree of countersinking of the screws.

**Web link**

[https://products.wera.de/en/bits\\_holders\\_adaptors\\_and\\_sets\\_holders\\_adaptors\\_connectors\\_bit\\_holder\\_with\\_adjustable\\_depth-control\\_stop\\_896\\_4\\_1\\_sb\\_sis.html](https://products.wera.de/en/bits_holders_adaptors_and_sets_holders_adaptors_connectors_bit_holder_with_adjustable_depth-control_stop_896_4_1_sb_sis.html)

Wera - 896/4/1 SB SiS  
05073210001 - 4013288178725

Wera Werkzeuge GmbH  
Korzter Straße 21-25  
D-42349 Wuppertal  
Tel: +49 (0)2 02 / 40 45-0  
E-Mail: [info@wera.de](mailto:info@wera.de)

## 896/4/1 SB Bit Holder with adjustable depth-control stop, 1/4" x 50 mm

Bit holder with Adjustable Depth-Control Stop



Set contents:

896/4/1 Bit Holder with adjustable depth stop, 1/4" x 50 mm



1x 1/4" x 50 mm



### Web link

[https://products.wera.de/en/bits\\_holders\\_adaptors\\_and\\_sets\\_holders\\_adaptors\\_connectors\\_bit\\_holder\\_with\\_adjustable\\_depth-control\\_stop\\_896\\_4\\_1\\_sb\\_sis.html](https://products.wera.de/en/bits_holders_adaptors_and_sets_holders_adaptors_connectors_bit_holder_with_adjustable_depth-control_stop_896_4_1_sb_sis.html)

Wera - 896/4/1 SB SiS  
05073210001 - 4013288178725

Wera Werkzeuge GmbH  
Korzter Straße 21-25  
D-42349 Wuppertal  
Tel: +49 (0)2 02 / 40 45-0  
E-Mail: [info@wera.de](mailto:info@wera.de)