



<b>EAN:</b>	4013288115546	<b>Size:</b>	89x7x6 mm
<b>Part number:</b>	05071089001	<b>Weight:</b>	11 g
<b>Article number:</b>	3867/4 TORX® B0	<b>Country of origin:</b>	CZ
		<b>Customs tariff number:</b>	82079030

- For recessed TORX® screws with securing pin
- TORX® bit with bore hole on the output side
- Stainless Steel Bits
- Solution to the extraneous rust problem: fasten stainless screws with stainless tools
- Vacuum ice-hardened
- 1/4" hexagon drive (Wera connecting series 4)

High quality bits out of stainless steel for recessed TORX® screws. Wera stainless are made out of stainless steel which prevents the formation of unsightly extraneous rust. 1/4" hexagon, suitable for holders as per DIN ISO 1173-F 6.3.

**Web link**

<https://www.wera.de/en/05071089001>

Wera - 3867/4 TORX® B0  
05071089001 - 4013288115546

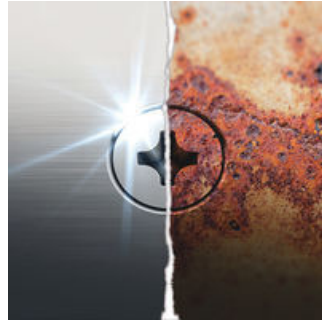
Wera Werkzeuge GmbH  
Korzter Straße 21-25  
D-42349 Wuppertal  
Tel: +49 (0)2 02 / 40 45-0  
E-Mail: [info@wera.de](mailto:info@wera.de)

**TORX® with borehole (B0)**



TORX® tools with a borehole prevent the unauthorised unfastening of safety screws. The screws contain a pin that protrudes into the drive profile so that "normal" TORX® tools cannot be used. This pin fits into the borehole of TORX® B0 tools allowing safety screws to be unfastened.

**Stainless Steel Bits**



Wera stainless steel bits are manufactured out of stainless steel so unsightly rust can be avoided. The stainless steel bits from Wera are vacuum ice-hardened and have the hardness and strength needed for screw connections. There are no limitations to the industrial applications they are suitable for.

**Screw stainless steel together with stainless steel!**







Solution to the rust problem: screwdriving stainless steel together with stainless steel! Wera stainless steel tools are manufactured out of stainless steel so unsightly rust can be avoided.

**Vacuum ice-hardened**



The stainless steel tools from Wera are vacuum ice-hardened and have the hardness and strength needed for screw connections. There are no limitations to the industrial applications they are suitable for.

**Further versions in this product family:**

		 mm	 inch	 mm
<b>05071089001</b>	<b>TX 10</b>	<b>89</b>	<b>3 1/2"</b>	<b>4.0</b>
05071090001	TX 15	89	3 1/2"	4.0
05071091001	TX 20	89	3 1/2"	4.5
05071092001	TX 25	89	3 1/2"	5.5
05071094001	TX 30	89	3 1/2"	6.0

**Web link**

<https://www.wera.de/en/05071089001>

Wera - 3867/4 TORX® B0  
05071089001 - 4013288115546

Wera Werkzeuge GmbH  
Korzter Straße 21-25  
D-42349 Wuppertal  
Tel: +49 (0)2 02 / 40 45-0  
E-Mail: info@wera.de