

# Bit-Box 20 BTZ PH, PH 2 x 25 mm, 20 pieces

Bits for Phillips Screws



<b>EAN:</b>	4013288187956	<b>Size:</b>	75x68x20 mm
<b>Part number:</b>	05057751001	<b>Weight:</b>	116 g
<b>Article number:</b>	Bit-Box 20 BTZ PH	<b>Country of origin:</b>	CZ
		<b>Customs tariff number:</b>	82079030

- For Phillips screws
- BiTorsion zone to absorb peak loads
- Considerable reduction in the risk of breakage, significant increase in service life
- Tough for hard materials
- 1/4" hexagon drive (Wera connecting series 1)
- "Take it easy" tool finder: colour coding according to profile and size
- In practical Bit-Box for simple removal

BiTorsion Bits for Phillips screws in a practical Bit-Box. Come with a torsion zone where kinetic energy is diverted to when peak loads prevail: this significantly prolongs the product service life; with "Take it easy" Toolfinder: colour coding according to profile and size stamp; tough viscous design for universal use; 1/4" hex, suitable for holders as per DIN ISO 1173-D 6.3.

## Web link

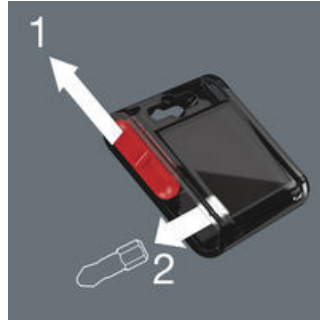
[https://products.wera.de/en/bits\\_holders\\_adaptors\\_and\\_sets\\_the\\_range\\_of\\_bits\\_bits\\_for\\_phillips\\_screws\\_bit-box\\_20\\_btz\\_ph.html](https://products.wera.de/en/bits_holders_adaptors_and_sets_the_range_of_bits_bits_for_phillips_screws_bit-box_20_btz_ph.html)

Wera - Bit-Box 20 BTZ PH  
05057751001 - 4013288187956

Wera Werkzeuge GmbH  
Korzter Straße 21-25  
D-42349 Wuppertal  
Tel: +49 (0)2 02 / 40 45-0  
E-Mail: info@wera.de

Bits for Phillips Screws

Bit-Box



The slide switch allows a simple and gradual removal and reinsertion of the bits. The transparent reverse side means that it is easy to know how many bits are still in the box.

BiTorsion Bits



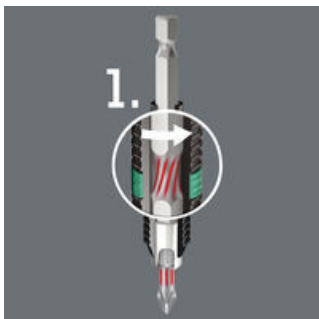
Peak forces that occur in power tool applications often result in premature wear of bits or damage to the screw head. This usually occurs during initial power-up and when the screw comes to a standstill. Screwdriving could become more productive and safer if these peak loads could be minimised. The Wera BiTorsion system prevents premature wear. The service life of the tool is extended and the productivity of power tool applications significantly increased.

Two cushioning torsion zones



The effectiveness of the BiTorsion system comes from a combination of two shock-absorbing spring elements. Both, bits as well as holders have a cushioning torsion zone that diverts the kinetic energy away from the drive tip during peak loads.

BiTorsion phase 1



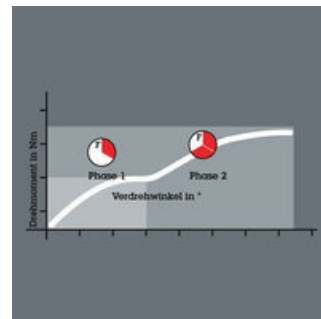
The torsion spring integrated into the unique BiTorsion holder absorbs lower levels of peak loads (Phase 1). Any overloading of this spring is effectively prevented by means of a supporting mechanism.

BiTorsion phase 2



Higher peak loads are minimised through the torsion effect of the bit shaft (Phase 2).

Above-average service life



Even the service life of conventional bits is enhanced with the use of the BiTorsion holder and the BiTorsion bit also functions in a normal holder.

BiTorsion and conventional tools



The BiTorsion holder and the BiTorsion bit can, of course, be used independently of one another.

Web link

[https://products.wera.de/en/bits\\_holders\\_adaptors\\_and\\_sets\\_the\\_range\\_of\\_bits\\_bits\\_for\\_phillips\\_screws\\_bit-box\\_20\\_btz\\_ph.html](https://products.wera.de/en/bits_holders_adaptors_and_sets_the_range_of_bits_bits_for_phillips_screws_bit-box_20_btz_ph.html)

Wera - Bit-Box 20 BTZ PH  
05057751001 - 4013288187956

Wera Werkzeuge GmbH  
Korzter Straße 21-25  
D-42349 Wuppertal  
Tel: +49 (0)2 02 / 40 45-0  
E-Mail: info@wera.de

## Bit-Box 20 BTZ PH, PH 2 x 25 mm, 20 pieces

Bits for Phillips Screws



Set contents:

851/1 BTZ bits, PH 2 x 25 mm



05056422001

20x PH 2 x 25 mm



### Web link

[https://products.wera.de/en/bits\\_holders\\_adaptors\\_and\\_sets\\_the\\_range\\_of\\_bits\\_bits\\_for\\_phillips\\_screws\\_bit-box\\_20\\_btz\\_ph.html](https://products.wera.de/en/bits_holders_adaptors_and_sets_the_range_of_bits_bits_for_phillips_screws_bit-box_20_btz_ph.html)

Wera - Bit-Box 20 BTZ PH  
05057751001 - 4013288187956

Wera Werkzeuge GmbH  
Korzter Straße 21-25  
D-42349 Wuppertal  
Tel: +49 (0)2 02 / 40 45-0  
E-Mail: [info@wera.de](mailto:info@wera.de)