

# Kraftform Kompakt 400 RA Imperial Set 2, 9 pieces

Series 400 T-Handle



<b>EAN:</b>	4013288223364	<b>Size:</b>	155x120x50 mm
<b>Part number:</b>	05057474001	<b>Weight:</b>	452 g
<b>Article number:</b>	Kraftform Kompakt 400 RA Set Imperial 2	<b>Country of origin:</b>	CZ
		<b>Customs tariff number:</b>	82079030

- Ergonomic 2-component handle with finger handle recesses and pleasant surface feel for very high power transmission and fatigue-free working
- The integrated ratchet with fine toothing ensures fast and safe working
- Reversing lever for comfortable clockwise/counterclockwise direction change
- Convenient working thanks to the ratchet mechanism fully embedded in the handle
- Fast-rotating sleeve for extremely high working speed
- 1/4" socket mounting with secure ball lock
- With Take it easy tool finder: colour coding by size

9-piece set in a robust textile box. One 411 A RA T-handle adapter screwdriver with ratchet functionality, for 1/4" sockets. The integrated ratchet with fine toothing (80 teeth/return angle 4.5°) eases and accelerates screwdriving without having to reposition the tool. The ratchet mechanism completely embedded in the handle ensures very handy and comfortable work. With reversing lever for comfortable clockwise/counterclockwise direction change in one-hand operation. The ergonomic shape of the handle fills the ball of the hand well, the fingers lie securely in the softly rounded recessed grips. The whole hand comes into contact with the handle, friction loss between hand and handle is avoided. For 1/4" square head sockets as well as 1/4" connectors with square head drive, with ball lock. 8 Zyklop sockets with 1/4" drive. "Take it easy" tool finder: With colour coding by size - for quick and easy identification of the required tool .

## Web link

[https://products.wera.de/en/screwdrivers\\_series\\_400\\_t-handle\\_kraftform\\_kompakt\\_400\\_ra\\_set\\_imperial\\_2.html](https://products.wera.de/en/screwdrivers_series_400_t-handle_kraftform_kompakt_400_ra_set_imperial_2.html)

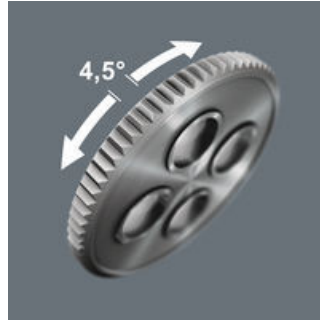
Wera - Kraftform Kompakt 400 RA Set Imperial 2  
05057474001 - 4013288223364

Wera Werkzeuge GmbH  
Korzter Straße 21-25  
D-42349 Wuppertal  
Tel: +49 (0)2 02 / 40 45-0  
E-Mail: [info@wera.de](mailto:info@wera.de)

### Ratchet functionality

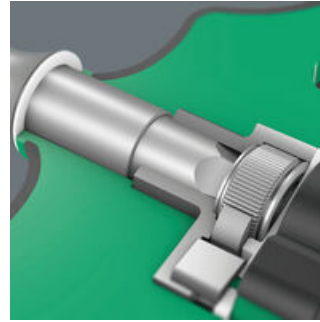


The 411 A RA T-handle is suitable for 1/4" sockets. The sockets are securely locked via the ball.



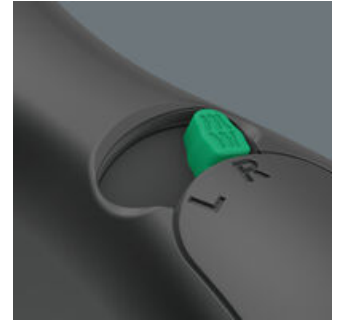
The integrated ratchet with fine toothing (80 teeth) and a return angle of 4.5° eases and accelerates screwdriving without having to reposition the tool.

### Ratchet mechanism in the handle



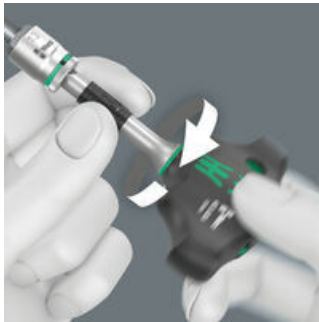
The ratchet mechanism of the 411 A RA T-handle adapter screwdriver is completely embedded in the handle. The compact shape of the tool allows convenient working.

### Reversible clockwise/counterclockwise



The change of direction can easily be made using the reversing lever.

### Fast-rotating sleeve



The fast-rotating sleeve allows the tool to be guided safely while screwdriving and increases the working speed.

### Ergonomic 2-component T-handle



The ergonomically shaped 2-component T-handle with finger recesses and pleasant surface facilitates very high power transmission and fatigue-free working.

### With 1/4" external square head tip



The 411 A RA T-handle is suitable for 1/4" sockets. The sockets are securely locked via the ball.

### Manual and machine sockets



The manual and machine sockets can be used both for hand and power tools use (non-impact). Users need just one socket set for all applications.

### Web link

[https://products.wera.de/en/screwdrivers\\_series\\_400\\_t-handle\\_kraftform\\_kompakt\\_400\\_ra\\_set\\_imperial\\_2.html](https://products.wera.de/en/screwdrivers_series_400_t-handle_kraftform_kompakt_400_ra_set_imperial_2.html)

Wera - Kraftform Kompakt 400 RA Set Imperial 2  
05057474001 - 4013288223364

Wera Werkzeuge GmbH  
Korzter Straße 21-25  
D-42349 Wuppertal  
Tel: +49 (0)2 02 / 40 45-0  
E-Mail: [info@wera.de](mailto:info@wera.de)

# Kraftform Kompakt 400 RA Imperial Set 2, 9 pieces

## Series 400 T-Handle



### Set contents:

#### 411 A RA T-handle adapter screwdriver with ratchet function, 1/4", 1/4" x 45 mm

05023460001 1x 1/4" x 45 mm



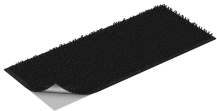
#### 8790 HMA Zyklus 1/4" socket, 3/16" x 23 mm



05003514001	1x 3/16" x 23 mm
05003515001	1x 7/32" x 23 mm
05003516001	1x 1/4" x 23 mm
05003517001	1x 9/32" x 23 mm
05003518001	1x 5/16" x 23 mm
05003520001	1x 3/8" x 23 mm
05003521001	1x 7/16" x 23 mm
05003522001	1x 1/2" x 23 mm

#### Hook and Loop Fastener Strip 120, 120 x 50 mm

1x 120 x 50 mm



### Web link

[https://products.wera.de/en/screwdrivers\\_series\\_400\\_t-handle\\_kraftform\\_kompakt\\_400\\_ra\\_set\\_imperial\\_2.html](https://products.wera.de/en/screwdrivers_series_400_t-handle_kraftform_kompakt_400_ra_set_imperial_2.html)

Wera - Kraftform Kompakt 400 RA Set Imperial 2  
05057474001 - 4013288223364

Wera Werkzeuge GmbH  
Korzter Straße 21-25  
D-42349 Wuppertal  
Tel: +49 (0)2 02 / 40 45-0  
E-Mail: [info@wera.de](mailto:info@wera.de)