

Bit-Check 12 Wood TX HF 1, 12 pieces

Bit-Checks Wood



EAN:	4013288226198	Size:	70x60x18 mm
Part number:	05057435001	Weight:	124 g
Article number:	Bit-Check 12 Wood TX HF 1	Country of origin:	CZ
		Customs tariff number:	82079030

- Particularly for wood applications
- 867/1 TORX® HF bits with holding function for TORX® screws as per the specification Acument Intellectual Properties
- Also suitable for Würth ASSY screws as well as Altenloh SPAX T-STAR plus screws
- 1/4" hexagon drive (Wera connecting series 1)
- With Take it easy tool finder: colour coding by size
- Ring magnet Rapidaptor, holder for holding even longer and heavier screws
- Upright positionable Bit-Checks convince due to their functionality in a minimum of space
- Bit-Check plastic material ensures robustness and durability

Bits and holder set, particularly suitable for woodworking. With their special geometry and as per the specification Acument Intellectual Properties, the 867/1 TORX® HF bits hold TORX® screws securely on the tool! This is particularly helpful in hard-to-reach work areas where the second hand cannot be used to hold the screw. They are also suitable for Würth ASSY screws as well as Altenloh SPAX T-STAR plus screws. With "Take it easy" tool finder: colour coding by size. Ringmagnet Rapidaptor holding tool to hold long and heavy screws. The Bit-Check allows a quick overview of the available tools. Unused bits are simply put back in the holder and will not be lost. Easy transport e.g. in your shirt pocket. The Bit-Check can be set up at the work place, which allows for quick access of the tools.

Web link

https://products.wera.de/en/bits_holders_adaptors_and_sets_bit_sets_bit-checks_wood_bit-check_12_wood_tx_hf_1.html

Wera - Bit-Check 12 Wood TX HF 1
05057435001 - 4013288226198

Wera Werkzeuge GmbH
Korzter Straße 21-25
D-42349 Wuppertal
Tel: +49 (0)2 02 / 40 45-0
E-Mail: info@wera.de

Bit-Checks Wood

Holding function for recessed TORX® screws



The HF tools developed by Wera are ideal because they feature an optimised geometry of the original TORX® profile. The wedging forces resulting from the surface pressure between the drive tip and the screw profile mean that TORX® screws made according to Acument Intellectual Properties specifications are securely held on the tool!

Also for ASSY and SPAX T-STAR plus screws



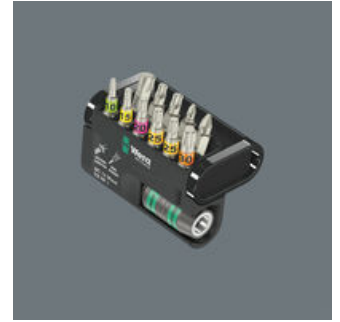
The Wera 867/1 TX HF bits are also suitable for Würth ASSY screws as well as Altenloh SPAX T-STAR plus screws.

Rapidaptor with ringmagnet



The floating, free-turning magnetic sleeve securely holds even large and heavy screws to enable immediate application. There is no need to hold the screw when applying the tool - something which can be dangerous and painful. Also ideal for overhead work.

At the workplace



The Bit-Checks can be positioned upright at the workplace so the tool is always quickly to hand.

Web link

https://products.wera.de/en/bits_holders_adaptors_and_sets_bit_sets_bit-checks_wood_bit-check_12_wood_tx_hf_1.html

Wera - Bit-Check 12 Wood TX HF 1
05057435001 - 4013288226198

Wera Werkzeuge GmbH
Korzter Straße 21-25
D-42349 Wuppertal
Tel: +49 (0)2 02 / 40 45-0
E-Mail: info@wera.de



Bit-Check 12 Wood TX HF 1, 12 pieces

Bit-Checks Wood





Set contents:



887/4 RR Rapidaptor Universal Bit Holder with ring magnet, 1/4" x 57 mm

	05052490001	1x	1/4" x 57 mm
			

855/1 Z bits, PZ 1 x 25 mm



	05072080001	1x	PZ 1 x 25 mm
	05072082001	1x	PZ 2 x 25 mm

867/1 TORX® HF Bits with holding function, TX 10 x 25 mm

	05066140001	1x	TX 10 x 25 mm
	05066141001	1x	TX 15 x 25 mm
	05066142001	1x	TX 20 x 25 mm
	05066143001	2x	TX 25 x 25 mm
	05066144001	1x	TX 30 x 25 mm
	05066145001 ¹⁾	1x	TX 40 x 25 mm

1) Pound-thru hexagonal; no Take it easy.

867/1 TORX® bits, TX 20 x 25 mm

	05066487001	1x	TX 20 x 25 mm
	05066488001	1x	TX 25 x 25 mm

Web link

https://products.wera.de/en/bits_holders_adaptors_and_sets_bit_sets_bit-checks_wood_bit-check_12_wood_tx_hf_1.html

Wera - Bit-Check 12 Wood TX HF 1
05057435001 - 4013288226198

Wera Werkzeuge GmbH
Korzter Straße 21-25
D-42349 Wuppertal
Tel: +49 (0)2 02 / 40 45-0
E-Mail: info@wera.de