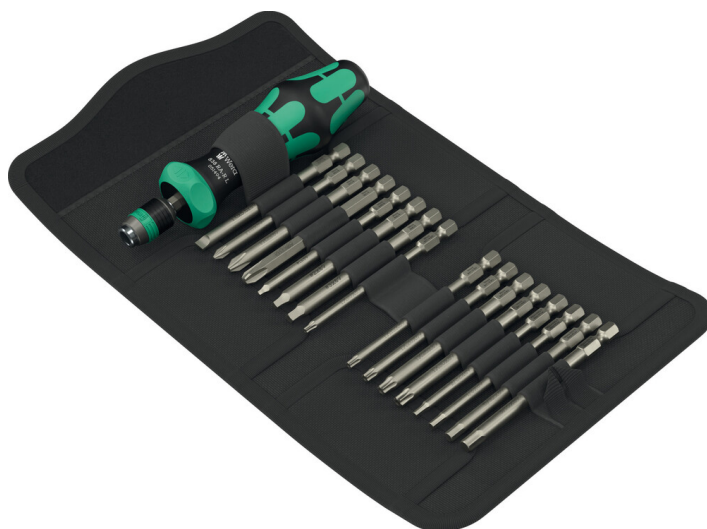


Kraftform Kompakt 60 RA-R Imperial 1, 17 pieces

Kraftform Kompakt 60 with ratchet functionality



EAN:	4013288234063	Size:	190x135x55 mm
Part number:	05051531001	Weight:	545 g
Article number:	Kraftform Kompakt 60 RA-R Imperial 1	Country of origin:	CZ
		Customs tariff number:	82054000

- The ratchet with fine toothing integrated in the handle allows fast working
- The innovative ratchet mechanism also allows fast "spinning". A real problem solver when there is no resistance from the screw
- Intuitive switching: If I turn the switch clockwise - the ratchet turns clockwise, if I turn the switch counterclockwise - it goes counterclockwise
- Use position 0 to deactivate the ratchet mechanism for precise working
- Innovative Rapidaptor technology for a quick bit change
- 16 bits, 89 mm long, for Phillips, TORX® BO, hexagonal socket, square head and slotted
- In a robust folding pouch with Wera 2go compatibility

17-piece set with 89 mm long bits in a practical folding pouch. Includes one 838 RA-R L bitholding screwdriver with ratchet functionality. The ratchet with fine toothing integrated in the handle allows fast working. The innovative ratchet mechanism allows "spinning" when the screw offers little resistance. Switching the screwdriving direction is intuitive: Turn the ring switch clockwise for clockwise screwdriving, turn it counterclockwise for counterclockwise screwdriving. Use position 0 to deactivate the ratchet mechanism for precise working. The Rapidaptor quick-release chuck (suitable for bits with 1/4" external hexagon drive as per DIN ISO 1173-C 6.3 and E 6.3 (ISO 1173)) allows for lightning-fast bit changes without any extra tools. 16 bits (89 mm), tough, for universal use.



Web link

https://products.wera.de/en/kraftform_kompakt_kraftform_kompakt_with_ratchet_functionality_kraftform_kompakt_60_with_ratchet_functionality_kraftform_kompakt_60_ra-r_i

Wera - Kraftform Kompakt 60 RA-R Imperial 1
05051531001 - 4013288234063

Wera Werkzeuge GmbH
Korzerter Straße 21-25
D-42349 Wuppertal
Tel: +49 (0)2 02 / 40 45-0
E-Mail: info@wera.de

Kraftform Kompakt 60 with ratchet functionality

Ratchet mechanism in the handle



The integrated ratchet with fine toothing ensures fast and safe working. The ratchet mechanism is completely embedded in the handle.

Intuitive screwdriving



Switching the screwdriving direction is intuitive: Turn the ring switch clockwise for clockwise screwdriving, turn it counterclockwise for counterclockwise screwdriving.

Ratchet mechanism allows fast spinning



The innovative ratchet mechanism allows "spinning" when the screw offers little resistance.

Chuck-all



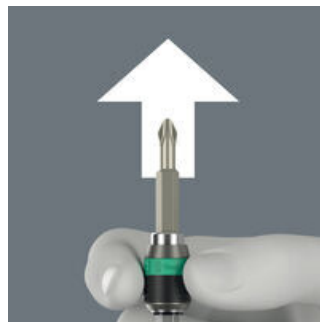
The Rapidaptor quick-release chucks hold 1/4" DIN ISO 1173-C 6,3 and E 6,3 as well as Wera series 1 and 4 bits.

Rapid-in and self-lock



The bit can be pushed into the adaptor without moving the sleeve. The lock is activated automatically as soon as the bit is applied to the screw. Bits are held securely and wobble-free.

Rapid-out



Simply push the sleeve forward to change the bit. The spring mechanism lifts the bit off the magnet and unlocks the tool. The bit can be easily removed. The rapid-out function makes it easy to remove even the smallest bits without extra tools.

Handle/interchangeable blade system



The handle/interchangeable blade system allows rapid exchange of the blades required for a wide range of applications.

Kraftform



The basic idea for the prototype of the Kraftform handle - that the hand should dictate the design - has, right through to today, proved to be correct. In cooperation with the internationally recognised Fraunhofer IAO Institute, Wera developed a screwdriver handle designed to match the shape of the human hand as long ago as the 1960s. After a long development phase, the Wera Kraftform handle was launched to the market in 1968. It has been optimised through the years with new technologies, but has kept its proven shape. After all, the human hand has not changed either.

Web link

https://products.wera.de/en/kraftform_kompakt_kraftform_kompakt_with_ratchet_functionality_kraftform_kompakt_60_with_ratchet_functionality_kraftform_kompakt_60_ra-r_i

Wera - Kraftform Kompakt 60 RA-R Imperial 1
05051531001 - 4013288234063

Wera Werkzeuge GmbH
Korzerter Straße 21-25
D-42349 Wuppertal
Tel: +49 (0)2 02 / 40 45-0
E-Mail: info@wera.de

Kraftform Kompakt 60 RA-R Imperial 1, 17 pieces

Kraftform Kompakt 60 with ratchet functionality



Set contents:

838 RA-R L Bitholding screwdriver with ratchet functionality, 1/4", 1/4" x 140 mm



05051494001

1x 1/4" x 140 mm



851/4 Z bits, PH 1 x 89 mm



05059760001

1x PH 1 x 89 mm

05059775001

1x PH 2 x 89 mm

05059795001¹⁾

1x PH 3 x 89 mm

1) Pound-thru hexagonal



867/4 Z TORX® B0 bits with bore hole, TX 10 x 89 mm



05060050001

1x TX 10 x 89 mm

05060051001

1x TX 15 x 89 mm

05060052001

1x TX 20 x 89 mm

05060053001

1x TX 25 x 89 mm

05060054001

1x TX 30 x 89 mm



840/4 Z bits, 3/32" x 89 mm



05059661001

1x 3/32" x 89 mm

05059663001

1x 1/8" x 89 mm

05059665001

1x 5/32" x 89 mm

05059666001

1x 3/16" x 89 mm



868/4 Square-Plus bits, # 1 x 89 mm



05134800001

1x # 1 x 89 mm

05134801001

1x # 2 x 89 mm

05134802001

1x # 3 x 89 mm



800/4 Z bits, 1 x 5.5 x 89 mm



05059488001

1x 1 x 5.5 x 89 mm



Web link

https://products.wera.de/en/kraftform_kompakt_kraftform_kompakt_with_ratchet_functionality_kraftform_kompakt_60_with_ratchet_functionality_kraftform_kompakt_60_ra-r_i

Wera - Kraftform Kompakt 60 RA-R Imperial 1
05051531001 - 4013288234063

Wera Werkzeuge GmbH
Korzerter Straße 21-25
D-42349 Wuppertal
Tel: +49 (0)2 02 / 40 45-0
E-Mail: info@wera.de