



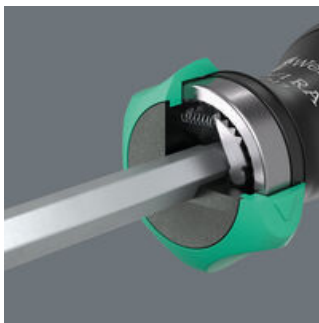
<b>EAN:</b>	4013288233967	<b>Size:</b>	230x70x45 mm
<b>Part number:</b>	05051518001	<b>Weight:</b>	290 g
<b>Article number:</b>	Kraftform Kompakt 27 RA 2	<b>Country of origin:</b>	CZ
		<b>Customs tariff number:</b>	82054000

- The ratchet with fine tothing integrated in the handle allows fast working
- The innovative ratchet mechanism also allows fast "spinning". A real problem solver when there is no resistance from the screw
- Intuitive switching: If I turn the switch clockwise - the ratchet turns clockwise, if I turn the switch counterclockwise - it goes counterclockwise
- Integrated bit magazine with 6x 25 mm bits
- Tough viscous bits for universal use
- Universal holder with stainless sleeve and strong permanent magnet



Kraftform bitholding screwdriver for 1/4" hex drive bits. The ratchet with fine tothing integrated in the handle allows fast working. Switching the screwdriving direction is intuitive: Turn the ring switch clockwise for clockwise screwdriving, turn it counterclockwise for counterclockwise screwdriving. Use position 0 to deactivate the ratchet mechanism for precise working. Includes 6 tough bits for universal use; stored in the bit magazine integrated in the handle. The strong permanent magnet in the 1/4" bit mounting ensures secure holding of the bit. The 2-component Kraftform handle with the combination of hard and soft zones allows for a firm grip and precise working.

**Innovative ratchet mechanism**



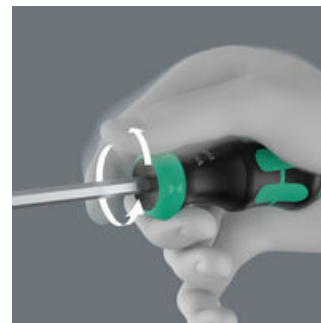
The ratchet with fine tothing integrated in the handle allows fast working. The innovative ratchet mechanism also allows fast "spinning". A real problem solver when there is no resistance from the screw.

**Intuitive switching, and deactivation of the ratchet functionality**



Intuitive switching of the ratchet mechanism. Turn the switch clockwise for clockwise screwdriving; turn it counterclockwise for counterclockwise screwdriving. Use position 0 to deactivate the ratchet mechanism for precise working.

**Ratchet mechanism allows "spinning"**



The innovative ratchet mechanism also allows fast "spinning". A real problem solver when there is no resistance from the screw.

**Handle with integrated bit magazine**



The handle can be opened and thus gives access to the six bits contained in the magazine.

**Web link**  
<https://www.wera.de/en/05051518001>

Wera - Kraftform Kompakt 27 RA 2  
 05051518001 - 4013288233967

Wera Werkzeuge GmbH  
 Korzter Straße 21-25  
 D-42349 Wuppertal  
 Tel: +49 (0)2 02 / 40 45-0  
 E-Mail: info@wera.de

**Universal holder with stainless steel sleeve**



With stainless steel sleeve and strong permanent magnet.

**Tough bits**



Tough Wera bits prevent the tip from breaking prematurely. Z-bits usually are the bit for universal screwdriving applications.

**Web link**

<https://www.wera.de/en/05051518001>

Wera - Kraftform Kompakt 27 RA 2  
05051518001 - 4013288233967

Wera Werkzeuge GmbH  
Korzter Straße 21-25  
D-42349 Wuppertal  
Tel: +49 (0)2 02 / 40 45-0  
E-Mail: [info@wera.de](mailto:info@wera.de)

Set contents:

851/1 Z bits, PH 1 x 25 mm



05072070001  
05072072001

1x PH 1 x 25 mm  
1x PH 2 x 25 mm

800/1 Z bits, 1 x 5.5 x 25 mm



05072059001  
05072061001

1x 1 x 5.5 x 25 mm  
1x 1.2 x 6.5 x 25 mm

868/1 Z Square-Plus bits, # 1 x 25 mm



05066405001  
05066410001

1x # 1 x 25 mm  
1x # 2 x 25 mm

Web link

<https://www.wera.de/en/05051518001>

Wera - Kraftform Kompakt 27 RA 2  
05051518001 - 4013288233967

Wera Werkzeuge GmbH  
Korzter Straße 21-25  
D-42349 Wuppertal  
Tel: +49 (0)2 02 / 40 45-0  
E-Mail: [info@wera.de](mailto:info@wera.de)