

EAN:	4013288234292	Size:	80x13x18 mm
Part number:	05051278001	Weight:	21 g
Article number:	1014	Country of origin:	CZ
		Customs tariff number:	82054000

- Bitholding screwdriver for bits with 4 mm external hexagon drive
- Multi-component Kraftform Micro handle with anti-roll feature and rotating cap
- Power zone with integrated soft zones for transmission of high tightening and loosening moments
- The rotating cap and the fast rotating zone below the cap allow for lightning-fast turning
- Precision zone directly above the screwdriver blade to get a good feeling of the correct rotation angle whilst adjusting

Kraftform Micro bitholding screwdriver with ergonomic handle for comfortable and fatigue-free working. The Kraftform Micro handle with its three zones (precision, power and fast rotating zones) and their special arrangement perfectly meets these requirements. The smooth-running cap, on which you can rest your hand, ideally supports these advantages. The anti-roll protection avoids bits from rolling away annoyingly at the workplace. Suitable for mounting 4 mm bits.

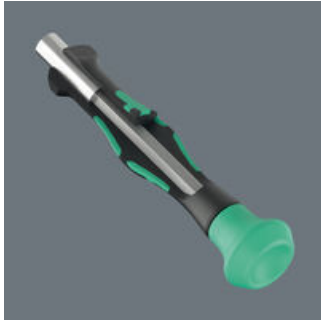


Web link
<https://www.wera.de/en/05051278001>

Wera - 1014
 05051278001 - 4013288234292

Wera Werkzeuge GmbH
 Korzter Straße 21-25
 D-42349 Wuppertal
 Tel: +49 (0)2 02 / 40 45-0
 E-Mail: info@wera.de

Kraftform Micro handle



Multi-component screwdriver handle for ergonomic working.

The refined screwdriver for electronics technicians



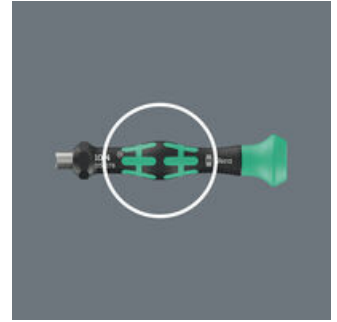
The Kraftform Micro, with its three zones and their specific arrangement, satisfies these requirements perfectly. The free-turning cap that provides support for the hand works with these advantages, enabling quick and easy precision work.

The precision zone



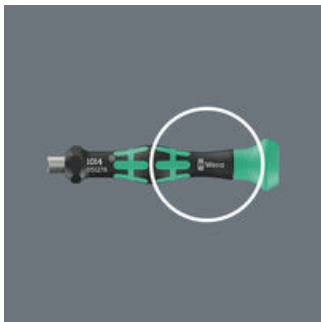
The precision zone directly above the blade gives the user a better feel for the right rotation angle during fine adjustment work.

The power zone



The power zone has integrated soft zones near the blade tip to ensure high torque transfer for loosening or tightening screws without losing contact with the screw.

The fast-turning zone



The fast-turning zone just below the rotating cap allows rapid spinning.

Further versions in this product family:

	 mm	 mm	 mm
05051278001	4	74.0	80.0

Web link
<https://www.wera.de/en/05051278001>

Wera - 1014
 05051278001 - 4013288234292

Wera Werkzeuge GmbH
 Korzter Straße 21-25
 D-42349 Wuppertal
 Tel: +49 (0)2 02 / 40 45-0
 E-Mail: info@wera.de