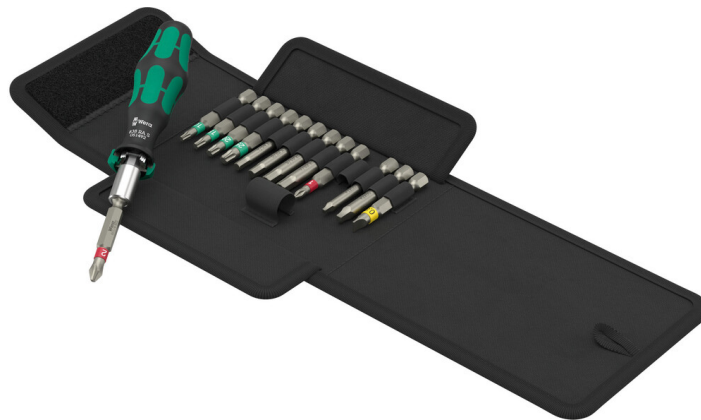


Kraftform Kompakt 838 RA S Imperial Set 1, 14 pieces

Kraftform Kompakt with Ratchet Function - Fine tooth system for precision work.



EAN:	4013288229816	Size:	145x110x40 mm
Part number:	05051065001	Weight:	310 g
Article number:	Kraftform Kompakt 838 RA S Imperial Set 1	Country of origin:	CZ
		Customs tariff number:	82079030

- Extremely small bitholding screwdriver for bits with 1/4" external hexagon drive
- Ratchet mechanism integrated in the handle
- The integrated ratchet with fine toothing ensures fast and safe working
- High working speed: The ratchet mechanism allows to "spin" when screwdriving
- Ergonomic intuitive switching to clockwise/counterclockwise or position 0
- Strong permanent magnet in the bit mounting holds the bits firmly
- Take it easy tool finder: colour coding according to profile and size
- Suitable for docking with the Wera 2go system

14-piece ratchet screwdriver set. Bitholding screwdriver with intuitive ratchet functionality. Turning the tool speeds up work. The ratchet mechanism completely embedded in the handle ensures very handy and effortless work. Ergonomic switching to clockwise/counterclockwise or position 0. Kraftform Plus handle for ergonomic screwdriving, avoiding blisters and calluses. Magnetic bitholding screwdriver for bits with 1/4" external hexagon drive. 13 tough bits for universal use (Phillips-head Phillips and Pozidriv, TORX®, hexagonal socket and slotted), 50 mm length; chemically nickel-plated, some with "Take it easy" Tool finder: With size stamping and colour coding by output to help you find the required bit easily.



Web link

https://products.wera.de/en/kraftform_kompakt_kraftform_kompakt_with_ratchet_function_fine_tooth_system_for_precision_work_kraftform_kompakt_838_ra_s_imperial_set_1

Wera - Kraftform Kompakt 838 RA S Imperial Set 1
05051065001 - 4013288229816

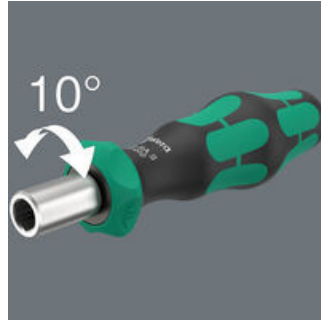
Wera Werkzeuge GmbH
Korzter Straße 21-25
D-42349 Wuppertal
Tel: +49 (0)2 02 / 40 45-0
E-Mail: info@wera.de

Kraftform Kompakt with Ratchet Function - Fine tooth system for precision work.

Ratchet functionality



Ratchet mechanism integrated in the handle



The integrated ratchet with fine toothing (36 teeth) and a return angle of 10° eases and accelerates screwdriving without having to reposition the tool.

Rapid screwdriving



The ratchet mechanism also allows fast "spinning" while screwdriving.

Changing ratchet direction



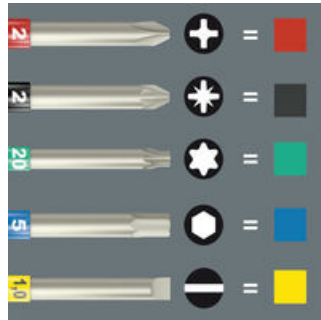
Ergonomic design of the reverse direction switch.

Ratchet mechanism in the handle



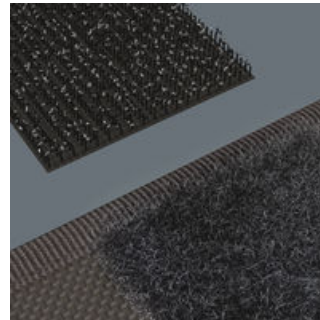
The integrated ratchet with fine toothing ensures fast and safe working. The ratchet mechanism is completely embedded in the handle. Thanks to the small size of the handle the ratchet can even be used in constricted screwdriving situations.

"Take it easy" tool finder



"Take it easy" tool finder with colour coding according to profiles and size stamp - for simple and rapid accessing of the required tool.

Flexible thanks to hook and loop fastener strips



The textile box features a fleece zone at the back. Using the provided self-adhesive hook and loop fastener strips, the textile box can be attached to the Wera 2go components. Or to the wall, shelf or workshop trolley.

Web link

https://products.wera.de/en/kraftform_kompakt_kraftform_kompakt_with_ratchet_function_fine_tooth_system_for_precision_work_kraftform_kompakt_838_ra_s_imperial_set_1

Wera - Kraftform Kompakt 838 RA S Imperial Set 1
05051065001 - 4013288229816

Wera Werkzeuge GmbH
Korzter Straße 21-25
D-42349 Wuppertal
Tel: +49 (0)2 02 / 40 45-0
E-Mail: info@wera.de


Kraftform Kompakt 838 RA S Imperial Set 1, 14 pieces

Kraftform Kompakt with Ratchet Function - Fine tooth system for precision work.




Set contents:

838 RA S Bitholding screwdriver with ratchet functionality, 1/4", 1/4" x 102 mm

 05051492001 1x 1/4" x 102 mm




851/4 BTZ bits, PH 1 x 50 mm

 05059550001 1x PH 1 x 50 mm
05059552001 1x PH 2 x 50 mm




867/4 BTZ TORX® bits, TX 10 x 50 mm

 1x TX 10 x 50 mm
1x TX 15 x 50 mm
1x TX 20 x 50 mm
1x TX 25 x 50 mm



840/4 Z bits, 9/64" x 50 mm

 05135095001 1x 9/64" x 50 mm
05135096001 1x 5/32" x 50 mm
05135097001 1x 3/16" x 50 mm
05135098001 1x 7/32" x 50 mm




800/4 BTZ bits, 0.8 x 5.5 x 50 mm

 1x 0.8 x 5.5 x 50 mm



868/4 Square-Plus bits, # 1 x 50 mm

 05060160001 1x # 1 x 50 mm
05060165001 1x # 2 x 50 mm



Hook and Loop Fastener Strip 70, 50 x 70 mm

1x 50 x 70 mm



Web link

https://products.wera.de/en/kraftform_kompakt_kraftform_kompakt_with_ratchet_function_fine_tooth_system_for_precision_work_kraftform_kompakt_838_ra_s_imperial_set_1

Wera - Kraftform Kompakt 838 RA S Imperial Set 1
05051065001 - 4013288229816

Wera Werkzeuge GmbH
Korzter Straße 21-25
D-42349 Wuppertal
Tel: +49 (0)2 02 / 40 45-0
E-Mail: info@wera.de