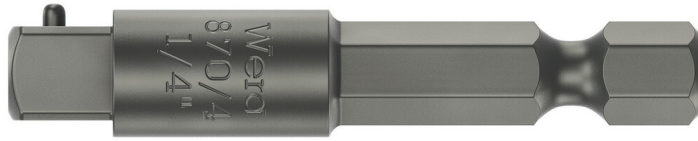


## 870/4 Adaptor, 1/4" x 50 mm

### Adaptors



<b>EAN:</b>	4013288017055	<b>Size:</b>	50x8x8 mm
<b>Part number:</b>	05050205001	<b>Weight:</b>	17 g
<b>Article number:</b>	870/4	<b>Country of origin:</b>	CZ
		<b>Customs tariff number:</b>	84661038

- Adaptor for machine-operated nut spinner sockets
- 1/4" external square
- 1/4" hexagon drive (Wera connecting series 4)

Tool shaft (adaptor) for power tool sockets with hexagon head drive by Wera. Drive: 1/4" hexagonal.

### Web link

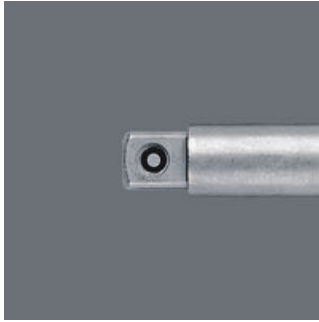
[https://products.wera.de/en/bits\\_holders\\_adaptors\\_and\\_sets\\_holders\\_adaptors\\_connectors\\_adaptors\\_870\\_4.html](https://products.wera.de/en/bits_holders_adaptors_and_sets_holders_adaptors_connectors_adaptors_870_4.html)

Wera - 870/4  
05050205001 - 4013288017055

Wera Werkzeuge GmbH  
Korzter Straße 21-25  
D-42349 Wuppertal  
Tel: +49 (0)2 02 / 40 45-0  
E-Mail: [info@wera.de](mailto:info@wera.de)





Adaptors

With locking pin



With locking pin; for machine-operated nut spinner sockets

Further versions in this product family:

	 inch	 mm	 inch	 inch
<b>05050205001<sup>1)</sup></b>	<b>1/4"</b>	<b>50</b>	<b>2"</b>	<b>1/4"</b>
05050210001 <sup>1)</sup>	1/4"	100	4"	1/4"
05050215001 <sup>1)</sup>	3/8"	50	2"	1/4"
05050220001 <sup>1)</sup>	3/8"	100	4"	1/4"

1) With locking pin; for machine-operated nut spinner sockets

Web link

[https://products.wera.de/en/bits HOLDERS\\_adaptors\\_and\\_sets HOLDERS\\_adaptors\\_connectors\\_adaptors\\_870\\_4.html](https://products.wera.de/en/bits HOLDERS_adaptors_and_sets HOLDERS_adaptors_connectors_adaptors_870_4.html)

Wera - 870/4  
05050205001 - 4013288017055

Wera Werkzeuge GmbH  
Korzter Straße 21-25  
D-42349 Wuppertal  
Tel: +49 (0)2 02 / 40 45-0  
E-Mail: info@wera.de