



<b>EAN:</b>	4013288235794	<b>Size:</b>	235x120x45 mm
<b>Part number:</b>	05049035001	<b>Weight:</b>	690 g
<b>Article number:</b>	Tool-Check PLUS Motorcycle 1	<b>Country of origin:</b>	CZ
		<b>Customs tariff number:</b>	82079030

- The compact workshop on the go
- The set is designed for common screwdriving applications on motorcycles
- Includes one bit ratchet for 1/4" bits, one bitholding screwdriver (1/4"), 2 universal holders for screwdriving machines (50 mm and 100 mm long), 28 bits (1/4"), one adapter for sockets (1/4" hexagon to 1/4" square head), 7 sockets (1/4")
- With a practical pouch with hook and loop fastener system
- The pouch with a sewn-in magnet on the front offers a place where screws and bits feel comfortable and will not get lost!
- Two extra compartments in the pouch for additional tools and small parts
- The set can be hung on the motorcycle frame via the flexible hook and loop part on the back
- Tool-Check with green locking components to secure the tools



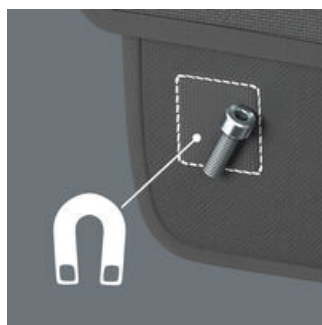
**Web link**  
<https://www.wera.de/en/05049035001>

Wera - Tool-Check PLUS Motorcycle 1  
 05049035001 - 4013288235794

Wera Werkzeuge GmbH  
 Korzter Straße 21-25  
 D-42349 Wuppertal  
 Tel: +49 (0)2 02 / 40 45-0  
 E-Mail: info@wera.de

40-piece compact workshop to go. For common screwdriving applications on motorcycles. With practical pouch (hook and loop fastener system). The sewn-in magnet on the front secures screws and bits - no risk of losing them! Two extra compartments for additional tools and small parts. The pouch can be hung on the motorcycle frame via the flexible hook and loop part on the back. Included are one bit ratchet (1/4") in a drop-forged solid steel design; with fine toothing mechanism (60 teeth) for a small return angle of 6° for precise working. Easy clockwise/counterclockwise switching. 1/4" sockets can also be used with the Wera 870/1 adapter (1/4" external hexagon to 1/4" external square head) included in the set. 7 Zyklop sockets (1/4") for manual and machine-operated tools; with ball stop groove. Knurling at the rear end for manageability during manual screwdriving. With Take it easy tool finder: colour coding by size to help you find the required tool quickly and easily. Made of matte chrome-plated chrome-vanadium. One Kraftform handle with 1/4" bit mounting, one 889/4/1 K bitholding screwdriver with Rapidaptor quick-release chuck, magnetic, one extension (100 mm) for bits with 1/4" external hexagon drive. 28 bits, 18 of which (Phillips, TORX®, hexagonal socket, slotted) in BTZ design with BiTorsion zone (prevents the bit from breaking prematurely) and Take it easy tool finder: colour coding by profile and size), one bit (TORX®) with torsion zone for longer service life (TZ), 9 bits (hexagonal socket, hexagonal socket with ball head) in tough design (Z) for universal use. The tools are stored and neatly arranged in the Tool-Check and secured by the green locking components.

**With a practical pouch with hook and loop fastener system**



The sewn-in magnet on the front of the pouch holds screws and bits securely. Additional tools and small parts can be stored in the two extra compartments. The pouch can be hung, e.g. on the motorcycle frame, via the flexible hook and loop part on the back.

**Secure attachment in the storage compartment**



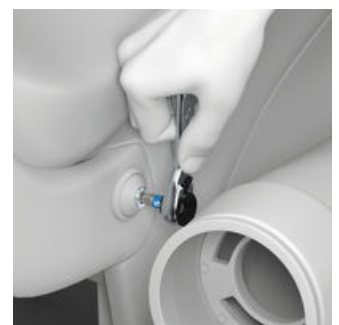
The pouch can be securely attached to the motorcycle's storage compartment using the hook and loop strap on the back.

**Safely stored**



The green locking components of the Tool-Check secure the tool reliably during transport. At the same time, they are easy to operate and allow quick access to the tools.

**Ideal for working in confined spaces**



With their extremely compact design, the Zyklop Mini ratchets are particularly suitable for all hard-to-reach applications.

**Web link**

<https://www.wera.de/en/05049035001>

Wera - Tool-Check PLUS Motorcycle 1  
05049035001 - 4013288235794

Wera Werkzeuge GmbH  
Korzter Straße 21-25  
D-42349 Wuppertal  
Tel: +49 (0)2 02 / 40 45-0  
E-Mail: info@wera.de

Bit ratchet also for sockets



1/4" sockets can also be used with the Zyklus Mini bit ratchet by connecting the 870/1 adapter (1/4" hexagon to 1/4" square head).

The Zyklus sockets



The Zyklus sockets are made of chrome-vanadium. The knurling at the rear end gives you a better grip during manual use. With Take it easy tool finder: colour coding by size as well as size stamping - to help you find the required socket quickly and easily.

BiTorsion Bits



The softer BiTorsion zone reduces the risk of bit breakage. This significantly increases product life.

Bits with Take it easy tool finder



Take it easy tool finder with colour coding according to profiles and size stamp - for simple and rapid accessing of the required tool.

Web link

<https://www.wera.de/en/05049035001>

Wera - Tool-Check PLUS Motorcycle 1  
05049035001 - 4013288235794

Wera Werkzeuge GmbH  
Korzter Straße 21-25  
D-42349 Wuppertal  
Tel: +49 (0)2 02 / 40 45-0  
E-Mail: info@wera.de

Set contents:

**8001 A Bit Ratchet 1/4", 1/4" x 87 mm**



1x 1/4" x 87 mm



**813 Bitholding screwdriver, 1/4" x 78 mm**



05051274001

1x 1/4" x 78 mm



**3899/4/1 Universal holder, stainless steel, 1/4" x 100 mm**



1x 1/4" x 100 mm



**889/4/1 K Rapidaptor Universal Bit Holder, 1/4" x 50 mm**



05052502001

1x 1/4" x 50 mm



**870/1 Adaptor, 1/4" x 25 mm**



05136000001<sup>1)</sup>

1x 1/4" x 25 mm

1) With friction ball; for manual nut spinner sockets



**851/1 BTZ bits, PH 1 x 25 mm**



05056420001

1x PH 1 x 25 mm

05056422001

2x PH 2 x 25 mm

05056424001

1x PH 3 x 25 mm



**867/1 TZ TORX® bits, TX 9 x 25 mm**



05066304001

1x TX 9 x 25 mm



**867/1 BTZ TORX® bits, TX 10 x 25 mm**



05066120001

1x TX 10 x 25 mm

05066122001

1x TX 15 x 25 mm

05066124001

1x TX 20 x 25 mm

05066126001

1x TX 25 x 25 mm

1x TX 27 x 25 mm

05066128001

1x TX 30 x 25 mm

05066130001

1x TX 40 x 25 mm



**867/1 Z TORX® B0 bits with bore hole, TX 25 x 25 mm**



05066515001

1x TX 25 x 25 mm

05066525001

1x TX 30 x 25 mm

05066530001

1x TX 40 x 25 mm



Web link

<https://www.wera.de/en/05049035001>

Wera - Tool-Check PLUS Motorcycle 1  
05049035001 - 4013288235794

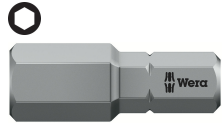
Wera Werkzeuge GmbH  
Korzter Straße 21-25  
D-42349 Wuppertal  
Tel: +49 (0)2 02 / 40 45-0  
E-Mail: info@wera.de

840/1 BTZ bits, 2 x 25 mm



05056681001	1x	2 x 25 mm
05056682001	1x	2.5 x 25 mm
05056683001	1x	3 x 25 mm
05056684001	1x	4 x 25 mm
05056685001	1x	5 x 25 mm
05056687001	1x	6 x 25 mm

840/1 Z bits, 8 x 25 mm



05056335001	1x	8 x 25 mm
-------------	----	-----------

842/1 Z bits, 2.5 x 25 mm



05056350001	1x	2.5 x 25 mm
05056352001	1x	3 x 25 mm
05056354001	1x	4 x 25 mm
05056356001	1x	5 x 25 mm
05056358001	1x	6 x 25 mm

800/1 BTZ bits, 0.8 x 5.5 x 25 mm



05056064001	1x	0.8 x 5.5 x 25 mm
-------------	----	-------------------

8790 HMA Zyklus 1/4" socket, 6 x 23 mm



05003505001	1x	6 x 23 mm
05003507001	1x	8 x 23 mm
05003509001	1x	10 x 23 mm
05003510001	1x	11 x 23 mm
05003511001	1x	12 x 23 mm
05003512001	1x	13 x 23 mm
05003513001	1x	14 x 23 mm

Hook and Loop Fastener Strip 120, 120 x 50 mm



1x	120 x 50 mm
----	-------------

Web link

<https://www.wera.de/en/05049035001>

Wera - Tool-Check PLUS Motorcycle 1  
05049035001 - 4013288235794

Wera Werkzeuge GmbH  
Korzter Straße 21-25  
D-42349 Wuppertal  
Tel: +49 (0)2 02 / 40 45-0  
E-Mail: info@wera.de