

2050/6 Screwdriver set and rack for electronic applications, 6 pieces

Series Kraftform Micro



EAN: 4013288194794
Part number: 05030181001
Article number: 2050/6

Size: 250x205x50 mm
Weight: 320 g
Country of origin: CZ
Customs tariff number: 82054000

- Kraftform Micro screwdriver for slotted, Phillips-Recess, IPR and Microstix® screws
- Multi-component Kraftform Micro handles for fast and ergonomic screwdriving
- Anti-roll feature and swivel cap for rapid twisting
- The Wera Black Point tip offers an exact fit and optimum corrosion protection
- Take it easy tool finder: colour coding according to profile and size
- Indispensable for many users, including electronics technicians, opticians, precision engineers, jewellers, EDP hardware fitters and model-makers

High quality Wera Micro screwdriver set for precision mechanical work. Rapid twisting is possible by fixing the hand on the twist cap and using the fast-turning zone just below it. This makes time-consuming grip adjustments unnecessary. Power zone with integrated soft zones ensure the transfer of higher tightening and loosening torque. Precision zone for the right angle for adjustment work. The Wera Black Point tip offers high corrosion protection and an exact fit. Includes practical rack for tidy storage of the screwdrivers.



Web link

https://products.wera.de/en/screwdrivers_series_kraftform_micro_2050_6.html

Wera - 2050/6
05030181001 - 4013288194794

Wera Werkzeuge GmbH
Korzter Straße 21-25
D-42349 Wuppertal
Tel: +49 (0)2 02 / 40 45-0
E-Mail: info@wera.de

Series Kraftform Micro

Kraftform Micro handle

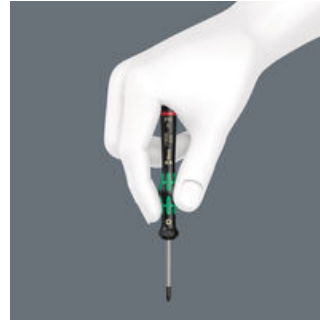


Screwdriving jobs in electrical and precision engineering applications are often tedious and time-consuming. We learned from users what is important for them: working speeds, torque, precision - and we then focused particularly on these issues.



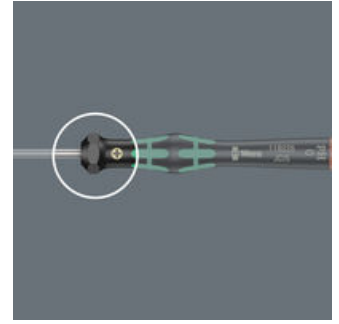
Multi-component screwdriver handle for ergonomic working.

The refined screwdriver for electronics technicians



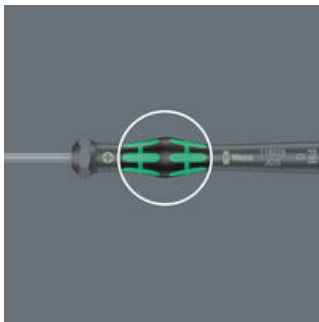
The Kraftform Micro, with its three zones and their specific arrangement, satisfies these requirements perfectly. The free-turning cap that provides support for the hand works with these advantages, enabling quick and easy precision work.

The precision zone



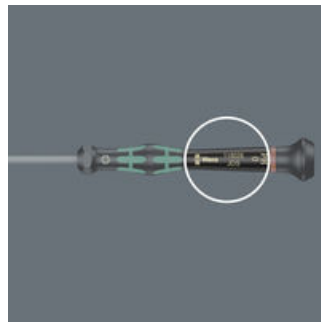
The precision zone directly above the blade gives the user a better feel for the right rotation angle during fine adjustment work.

The power zone



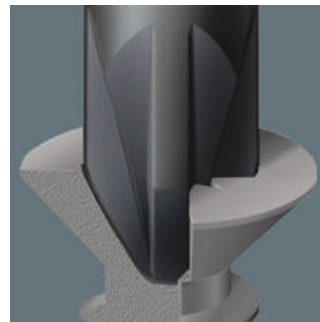
The power zone has integrated soft zones near the blade tip to ensure high torque transfer for loosening or tightening screws without losing contact with the screw.

The fast-turning zone



The fast-turning zone just below the rotating cap allows rapid twisting.

Wera Black Point tip



The Wera Black Point tip and a refined hardening process ensure long service life of the tip, improved corrosion protection and an exact fit.

"Take it easy" Tool Finder



Screwdrivers with "Take it easy" tool finder: colour coding according to profile and size stamp.

Web link

https://products.wera.de/en/screwdrivers_series_kraftform_micro_2050_6.html

Wera - 2050/6
05030181001 - 4013288194794

Wera Werkzeuge GmbH
Korzter Straße 21-25
D-42349 Wuppertal
Tel: +49 (0)2 02 / 40 45-0
E-Mail: info@wera.de

2050/6 Screwdriver set and rack for electronic applications, 6 pieces

Series Kraftform Micro



Set contents:

2050 PH Screwdriver for Phillips screws for electronic applications, PH 000 x 40 mm



05345290001^{1),2)} 1x PH 000 x 40 mm

05118019001^{1),2)} 1x PH 00 x 40 mm

05118026001³⁾ 1x PH 0 x 40 mm

1) Optimised for Asian PH screws

2) On the output side, the blade is turned to a nominal length of 10 mm

3) Size 0 modified according to JCIS 0 (Japanese Camera Industrial Standard)

2067 IPR TORX PLUS® Screwdriver for electronic applications, 1 IPR x 40 mm



05030160001¹⁾ 1x 1 IPR x 40 mm

1) Without bore hole

2072 Kraftform Micro screwdriver for Microstix® screws, m x 40 mm



05118145001 1x m x 40 mm

2035 Screwdriver for slotted screws for electronic applications, 0.35 x 2.5 x 40 mm



05117997001 1x 0.35 x 2.5 x 40 mm

Web link

https://products.wera.de/en/screwdrivers_series_kraftform_micro_2050_6.html

Wera - 2050/6

05030181001 - 4013288194794

Wera Werkzeuge GmbH

Korzter Straße 21-25

D-42349 Wuppertal

Tel: +49 (0)2 02 / 40 45-0

E-Mail: info@wera.de