

367 TORX PLUS® Screwdriver for TORX PLUS® screws, 9 IP x 60 mm

Kraftform Plus – Series 300



EAN:	4013288040121	Size:	141x26x26 mm
Part number:	05028033001	Weight:	32 g
Article number:	367 TORX PLUS®	Country of origin:	CZ
		Customs tariff number:	82054000

- For TORX PLUS® socket screws
- Multi-component Kraftform handle for fast and ergonomic screwdriving
- Handle markings simplify finding and sorting of tools
- Hexagonal anti-roll feature against rolling away
- The Wera Black Point tip offers an exact fit and optimum corrosion protection

High quality Kraftform Plus screwdriver by Wera. TORX PLUS® profile: in comparison to "normal" TORX® profiles, the enlargement of the 6 torque-transferring flanks between the tool and screw is implemented by using an elliptical and not circular profile design. This means that the power applied when fastening is spread across a larger surface area. Higher torque is transferred and the service life of the screw and tool is also enhanced. Multi-component Kraftform handle for rapid and convenient working. Kraftform Plus: hard gripping zones for high working speeds whereas soft zones ensure high torque transfer. The Wera Black Point tip offers a perfect fit and optimised corrosion protection. The hexagonal non-roll feature prevents any annoying rolling away at the workplace. Handle markings for simplified finding and sorting of the tools.



Web link

https://products.wera.de/en/screwdrivers_kraftform_plus_series_300_367_torx_plus.html

Wera - 367 TORX PLUS®
05028033001 - 4013288040121

Wera Werkzeuge GmbH
Korzter Straße 21-25
D-42349 Wuppertal
Tel: +49 (0)2 02 / 40 45-0
E-Mail: info@wera.de

TORX PLUS®



Kraftform Plus screwdrivers - ergonomics you can grasp. They relieve the entire hand-arm system even when used intensively. Along with other technical and product advantages such as the Lasertip for a secure fit in the screw head, Kraftform screwdrivers are the ideal choice whenever manual screwdriving jobs are concerned.

Compared with the "normal" TORX® profile, the elliptical instead of circular profile enlarges the 6 flanks that transfer torque between the tool and the screw. This means that the force applied when screwdriving is spread across a larger surface area. Higher torque is transferred and, in addition, the service life of the screw and tool are lengthened. The so-called centre-lock screws on cutting tools represent a typical use of this type of screw profile. The thermal influences on such holders for carbide insert tips often "bake" the retaining screws so firmly that it is important to have a profile that considerably enhances the loosening torque capability of the screws. For this reason a torque-stable screw profile is necessary to avoid any possible damage to the screw and to exclude the possibility of an otherwise costly machine downtime.

Kraftform



The basic idea for the prototype of the Kraftform handle - that the hand should dictate the design - has, right through to today, proved to be correct. In cooperation with the internationally recognised Fraunhofer IAO Institute, Wera developed a screwdriver handle designed to match the shape of the human hand as long ago as the 1960s. After a long development phase, the Wera Kraftform handle was launched to the market in 1968. It has been optimised through the years with new technologies, but has kept its proven shape. After all, the human hand has not changed either.

Rapid hand repositioning



The hard materials used for the handle ensure rapid hand repositioning without any danger of the skin "sticking" to the handle. The surrounding hard zones with large diameters glide like wheels through the hand.

Web link

https://products.wera.de/en/screwdrivers_kraftform_plus_series_300_367_torx_plus.html

Wera - 367 TORX PLUS®
05028033001 - 4013288040121

Wera Werkzeuge GmbH
Korzter Straße 21-25
D-42349 Wuppertal
Tel: +49 (0)2 02 / 40 45-0
E-Mail: info@wera.de

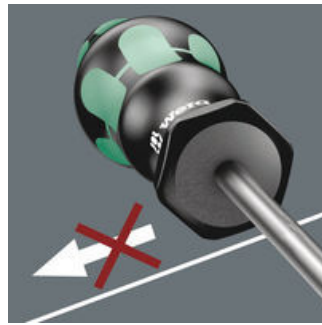
Kraftform Plus – Series 300

Large contact area



The large contact area - with particularly high friction to the soft zones - results in high torque transfer without any bruising from the edges.

Non-roll feature



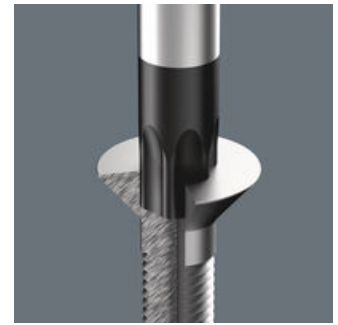
The hexagonal non-roll feature prevents any rolling away at the workplace.

Identification marking








The screw symbol and tip size identification markings on the handle make it easier to find the right screwdriver in the tool case, or at the workplace.

Wera Black Point tip



The Wera Black Point tip and a refined hardening process ensure long service life of the tip, improved corrosion protection and an exact fit.

Further versions in this product family:

		 mm	 mm	 mm	 inch
05028029001	5 IP	60	70	3.5	2 3/8"
05028030001	6 IP	60	70	3.5	2 3/8"
05028031001	7 IP	60	70	3.5	2 3/8"
05028032001	8 IP	60	70	3.5	2 3/8"
05028033001	9 IP	60	81	4.0	2 3/8"
05028034001	10 IP	80	81	4.0	3 1/8"
05028035001	15 IP	80	98	4.0	3 1/8"
05028036001	20 IP	100	98	4.5	4"
05028037001	25 IP	100	105	5.0	4"
05028038001	30 IP	115	105	6.0	4 9/16"

Web link

https://products.wera.de/en/screwdrivers_kraftform_plus_series_300_367_torx_plus.html

Wera - 367 TORX PLUS®
05028033001 - 4013288040121

Wera Werkzeuge GmbH
Korzter Straße 21-25
D-42349 Wuppertal
Tel: +49 (0)2 02 / 40 45-0
E-Mail: info@wera.de