



<b>EAN:</b>	4013288222879	<b>Size:</b>	150x130x50 mm
<b>Part number:</b>	05023471001	<b>Weight:</b>	608 g
<b>Article number:</b>	Kraftform Kompakt 400 RA Set 1	<b>Country of origin:</b>	CZ
		<b>Customs tariff number:</b>	82041100

- The integrated ratchet with fine tothing ensures fast and safe working
- Convenient working thanks to the ratchet mechanism fully embedded in the handle
- Reversing lever for comfortable clockwise/counterclockwise direction change
- Ergonomic 2-component handle with finger handle recesses and pleasant surface feel for very high power transmission and fatigue-free working
- Rapidaptor bitholding screwdriver with fast-rotating sleeve for lightning-fast bit changes and high working speeds
- For bits with 1/4" external hexagon drive as per DIN ISO 1173-C 6.3 and E 6.3
- Fast-rotating sleeve for extremely high working speed

17-piece set in a robust textile box. One 416 RA T-handle bitholding screwdriver with ratchet functionality and Rapidaptor quick-release chuck for 1/4" bits. The integrated ratchet with fine tothing (80 teeth/return angle 4.5°) eases and accelerates screwdriving without having to reposition the tool. The ratchet mechanism completely embedded in the handle ensures very handy and comfortable work. With reversing lever for comfortable clockwise/counterclockwise direction change in one-hand operation. The ergonomic shape of the handle fills the ball of the hand well, the fingers lie securely in the softly rounded recessed grips. The whole hand comes into contact with the handle, friction loss between hand and handle is avoided. Bit holder for bits with 1/4" external hexagon drive as per DIN ISO 1173-C 6.3 and E 6.3. With Rapidaptor technology for lightning-fast bit changes. 16 tough bits, 1/4", 89 mm long, for universal use.



**Web link**

<https://www.wera.de/en/05023471001>

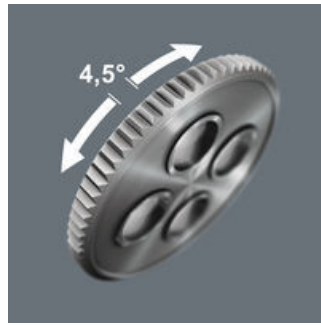
Wera - Kraftform Kompakt 400 RA Set 1  
05023471001 - 4013288222879

Wera Werkzeuge GmbH  
Korzter Straße 21-25  
D-42349 Wuppertal  
Tel: +49 (0)2 02 / 40 45-0  
E-Mail: info@wera.de

**Ratchet functionality**

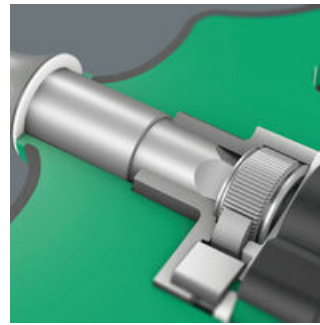


The ratchet mechanism of the 416 RA T-handle bitholding screwdriver is completely embedded in the handle. The compact shape of the tool allows convenient working.



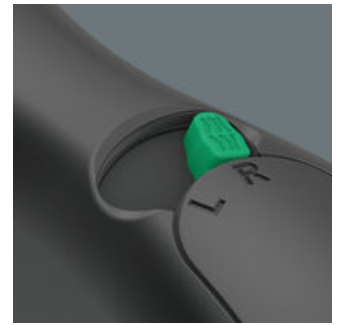
The integrated ratchet with fine toothing (80 teeth) and a return angle of 4.5° eases and accelerates screwdriving without having to reposition the tool.

**Ratchet mechanism in the handle**



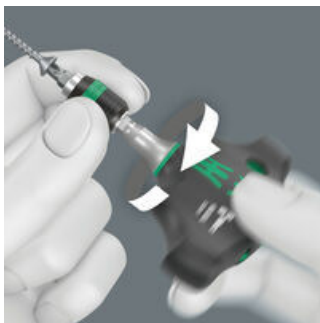
The ratchet mechanism of the 416 RA T-handle bitholding screwdriver is completely embedded in the handle. The compact shape of the tool allows convenient working.

**Reversible clockwise/counterclockwise**



The change of direction can easily be made using the reversing lever.

**Fast-rotating sleeve**



The fast-rotating sleeve allows the tool to be guided safely while screwdriving and increases the working speed.

**Ergonomic 2-component T-handle**



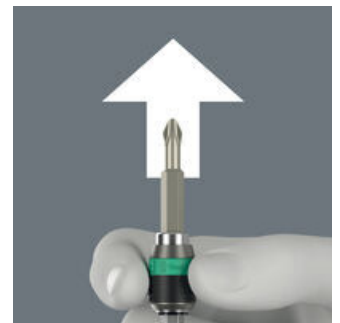
The ergonomically shaped 2-component T-handle with finger recesses and pleasant surface facilitates very high power transmission and fatigue-free working.

**Rapid-in and self-lock**



The bit can be pushed into the adaptor without moving the sleeve. The lock is activated automatically as soon as the bit is applied to the screw. Bits are held securely and wobble-free.

**Rapid-out**



Simply push the sleeve forward to change the bit. The spring mechanism lifts the bit off the magnet and unlocks the tool. The bit can be easily removed. The rapid-out function makes it easy to remove even the smallest bits without extra tools.

**Web link**

<https://www.wera.de/en/05023471001>

Wera - Kraftform Kompakt 400 RA Set 1  
05023471001 - 4013288222879

Wera Werkzeuge GmbH  
Korzter Straße 21-25  
D-42349 Wuppertal  
Tel: +49 (0)2 02 / 40 45-0  
E-Mail: info@wera.de

Set contents:

**416 RA T-handle bitholding screwdriver with ratchet function and Rapidaptor quick-release chuck, 1/4" x 45 mm**



05023461001 1x 1/4" x 45 mm



**851/4 Z bits, PH 2 x 89 mm**



05059775001 1x PH 2 x 89 mm



05059795001<sup>1)</sup> 1x PH 3 x 89 mm

1) Hexagonal blade

**855/4 Z bits, PZ 2 x 89 mm**



05060035001 1x PZ 2 x 89 mm



05060043001<sup>1)</sup> 1x PZ 3 x 89 mm

1) Hexagonal blade

**867/4 Z TORX® bits, TX 10 x 89 mm**



05060186001 1x TX 10 x 89 mm



05060187001 1x TX 15 x 89 mm

05060188001 1x TX 20 x 89 mm

05060189001 1x TX 25 x 89 mm

05060191001 1x TX 30 x 89 mm

05060192001<sup>1)</sup> 1x TX 40 x 89 mm

1) Hexagonal blade

**840/4 Z bits, 3 x 89 mm**



05059630001 1x 3 x 89 mm



05059631001 1x 4 x 89 mm

05059632001 1x 5 x 89 mm

05059633001<sup>1)</sup> 1x 6 x 89 mm

05059637001<sup>1)</sup> 1x 8 x 89 mm

1) Hexagonal blade

**800/4 Z bits, 1 x 5.5 x 89 mm**

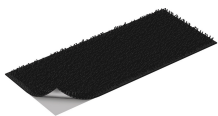


05059488001 1x 1 x 5.5 x 89 mm



**Hook and Loop Fastener Strip 120, 120 x 50 mm**

1x 120 x 50 mm



Web link

<https://www.wera.de/en/05023471001>

Wera - Kraftform Kompakt 400 RA Set 1  
05023471001 - 4013288222879

Wera Werkzeuge GmbH  
Korzter Straße 21-25  
D-42349 Wuppertal  
Tel: +49 (0)2 02 / 40 45-0  
E-Mail: [info@wera.de](mailto:info@wera.de)