



EAN:	4013288221728	Size:	280x220x75 mm
Part number:	05023456001	Weight:	1330 g
Article number:	467/7 HF Set 2	Country of origin:	CZ
		Customs tariff number:	82054000

- T-handle screwdriver for the transmission of particularly high tightening and loosening torque
- Ergonomic 2-component handle with finger handle recesses and pleasant surface feel for very high power transmission and fatigue-free working
- Take it easy tool finder: colour coding according to profile and size
- With additional short arm for the transmission of extremely high torques due to the leverage of the long arm
- With holding function (HF) on the long arm to securely hold the screw on the tool
- Including metal rack; the rack can be placed upright or hung on the tool wall.

T-handle screwdriver: The ideal handle shape allows the transmission of particularly high tightening and loosening torque. The ergonomic shape of the handle fills the palm of the hand well, the fingers lie safely in the soft rounded handle recesses. The whole hand makes contact with the handle and friction losses between the hand and the handle are avoided. With holding function to securely hold the TORX® screw on the tool. Special surface treatment of the blades for high corrosion protection and optimum fitting accuracy in the screw. Including metal rack for storage. The rack can be placed on the workbench or hung on the tool wall.

Web link
<https://www.wera.de/en/05023456001>

Wera - 467/7 HF Set 2
05023456001 - 4013288221728

Wera Werkzeuge GmbH
Korzter Straße 21-25
D-42349 Wuppertal
Tel: +49 (0)2 02 / 40 45-0
E-Mail: info@wera.de

Ergonomic 2-component T-handle



The ergonomically shaped 2-component T-handle with finger recesses and pleasant surface facilitates very high power transmission and fatigue-free working.

TORX® HF profile



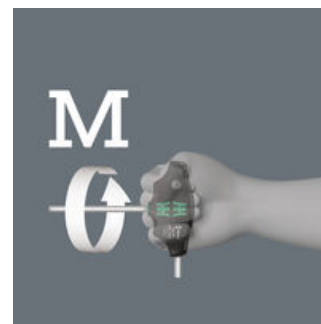
In tight assembly or disassembly situations, for example in engine compartments, it is not possible to securely hold the screw with the hand on the screwdriver, and the screw subsequently often gets lost. Lengthy searches or the loss of the screw (with the associated danger that could bring about) are the consequence. The HF tools developed by Wera are ideal because they feature an optimised geometry of the original TORX® profile. The wedging forces resulting from the surface pressure between the drive tip and the screw profile mean that the screw is securely held on the tool!

Second arm



The additional short arm, which emerges laterally from the handle, allows the transmission of extremely high torques by using the long arm as a lever.

High torque transfer



By using the blade as an extension of your lower arm you can transfer particularly high torque.

Corrosion protection and fitting accuracy



Due to the special surface treatment, the blades receive a high level of corrosion protection. The optimum fitting accuracy of the screw is also guaranteed.

Take it easy Tool Finder



Screwdrivers with Take it easy tool finder: colour coding according to profile and size stamp.

With useful metal rack



Including metal rack for clearly arranged storage in the workshop. The rack can be placed upright or hung on the tool wall. The T-handle screwdrivers can be easily removed from the rack due to the angle of the rack when mounting it on the wall. The T-handles will not be pinched by the wall.

Web link
<https://www.wera.de/en/05023456001>

Wera - 467/7 HF Set 2
 05023456001 - 4013288221728

Wera Werkzeuge GmbH
 Korzter Straße 21-25
 D-42349 Wuppertal
 Tel: +49 (0)2 02 / 40 45-0
 E-Mail: info@wera.de

467/7 TORX® HF Set 2 Screwdriver set T-handle TORX® screwdrivers with holding function, 7 pieces

Set contents:

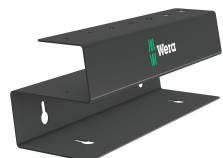
467 TORX® HF T-handle screwdriver with holding function, TX 10 x 100 mm



05023371001	1x	TX 10 x 100 mm
05023372001	1x	TX 15 x 100 mm
05023373001	1x	TX 20 x 100 mm
05023375001	1x	TX 25 x 100 mm
05023378001	1x	TX 30 x 200 mm
05023379001	1x	TX 40 x 200 mm
05023380001	1x	TX 45 x 200 mm

9606 Metal rack for T-handle screwdrivers, 214 x 78 mm

05136426001	1x	214 x 78 mm
-------------	----	-------------



Web link

<https://www.wera.de/en/05023456001>

Wera - 467/7 HF Set 2
05023456001 - 4013288221728

Wera Werkzeuge GmbH
Korzter Straße 21-25
D-42349 Wuppertal
Tel: +49 (0)2 02 / 40 45-0
E-Mail: info@wera.de