



|                        |                          |                               |               |
|------------------------|--------------------------|-------------------------------|---------------|
| <b>EAN:</b>            | 4013288218131            | <b>Size:</b>                  | 275x175x60 mm |
| <b>Part number:</b>    | 05022750001              | <b>Weight:</b>                | 915 g         |
| <b>Article number:</b> | Kraftform 3100 i/7 Set 1 | <b>Country of origin:</b>     | CZ            |
|                        |                          | <b>Customs tariff number:</b> | 82054000      |

- 6-piece VDE screwdriver set, stainless, in compact, textile box with Wera 2go compatibility
- Insulated VDE stainless blades for secure work at 1,000 volts
- Smooth hard zones for high speed turning, soft grip zones for high torque transfer
- Take it easy tool finder: colour coding according to profile and size
- With Wera bottle opener

6-piece VDE screwdriver set. High quality Kraftform Plus VDE screwdriver set out of stainless steel by Wera. The stainless tools from Wera are vacuum ice-hardened and have the hardness and strength needed for screw connections. They can be used for industrial application without hesitation. The individual testing of the Kraftform Stainless VDE screwdrivers in a water bath at 10,000 volts as per DIN EN 60900 (IEC 60900) ensures safe working with voltages of up to 1,000 volts. Secure working is also ensured under extreme conditions and verified with the proven cold impact resistance at -40° C. Mainly with Lasertip: the Lasertip tip literally bites into the screw head and prevents any slipping out of the screw recess. Multi-component Kraftform handle for fast and low-fatigue working. "Take it easy" Tool Finder: colour coding according to profile and size. The hexagonal anti-roll feature prevents any bothersome rolling away at the workplace. Plus iconic Wera bottle opener.



#### Web link

Wera - Kraftform 3100 i/7 Set 1  
05022750001 - 4013288218131

Wera Werkzeuge GmbH  
Korzter Straße 21-25  
D-42349 Wuppertal  
Tel: +49 (0)2 02 / 40 45-0  
E-Mail: [info@wera.de](mailto:info@wera.de)

#### Suitable for Wera 2go



Why are stainless elements so often affected by rust? One reason: screwdriving jobs are often carried out with a tool out of made from conventional steel which can result in extraneous rust forming. This is annoying. We were confident that this could be prevented by using tools likewise out of stainless steel and meeting the required standard of industrial hardness. A tool series out of stainless steel. The forming of extraneous rust is prevented and a special vacuum ice-hardening process ensures the required degree of hardness - and they are even VDE-tested, too.



Suitable for docking with the Wera 2go system.

#### Individually tested



The individual testing at 10,000 volts, in accordance with IEC 60900, ensures safe working with loads up to 1,000 volts.

#### Wera Stainless Steel Tools.



Solution to the rust problem: screwdriving stainless steel together with stainless steel! Wera stainless steel tools are manufactured out of stainless steel so unsightly rust can be avoided.

#### Vacuum ice-hardened



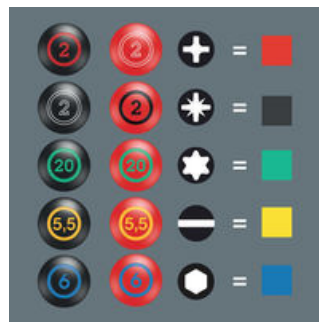
The stainless steel tools from Wera are vacuum ice-hardened and have the hardness and strength needed for screw connections. There are no limitations to the industrial applications they are suitable for.

#### Lasertip



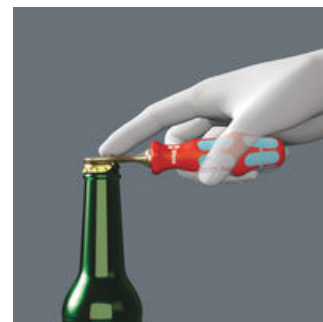
A precisely-focused laser creates a sharp-edged surface structure. Wera Lasertip "bites" itself into the screw head and prevents any slips out of the recess. It is available for screwdrivers for slotted, Phillips and Pozidriv screws.

#### "Take it easy" Tool Finder



Screwdrivers with "Take it easy" tool finder: colour coding according to profile and size stamp.

#### Convenient



Plus iconic Wera bottle opener.

#### Web link

Wera - Kraftform 3100 i/7 Set 1  
05022750001 - 4013288218131

Wera Werkzeuge GmbH  
Korzerter Straße 21-25  
D-42349 Wuppertal  
Tel: +49 (0)2 02 / 40 45-0  
E-Mail: info@wera.de

Set contents:

3162 i PH VDE Insulated screwdriver for Phillips screws, stainless, PH 2 x 100 mm



05022734001

1x PH 2 x 100 mm



3165 i PZ VDE Insulated screwdriver for Pozidriv screws, stainless, PZ 1 x 80 mm



05022740001

1x PZ 1 x 80 mm

05022741001

1x PZ 2 x 100 mm



3160 i VDE Insulated screwdriver for slotted screws, stainless, 0.6 x 3.5 x 100 mm



05022730001<sup>1)</sup>

1x 0.6 x 3.5 x 100 mm

05022731001

1x 0.8 x 4 x 100 mm

05022732001

1x 1 x 5.5 x 125 mm

1) without Lasertip



Bottle opener, 147

1x 147



Hook and Loop Fastener Strip 240, 50 x 240 mm

1x 50 x 240 mm



Web link