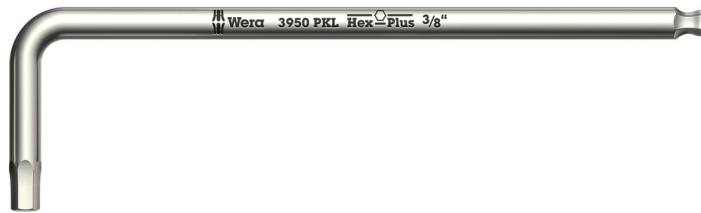


## 3950 PKL L-key, Imperial, stainless, 3/8" x 224 mm

### L-Keys for Hexagon Socket Screws



|                        |               |                               |              |
|------------------------|---------------|-------------------------------|--------------|
| <b>EAN:</b>            | 4013288117236 | <b>Size:</b>                  | 224x42x12 mm |
| <b>Part number:</b>    | 05022718001   | <b>Weight:</b>                | 225 g        |
| <b>Article number:</b> | 3950 PKL inch | <b>Country of origin:</b>     | CZ           |
|                        |               | <b>Customs tariff number:</b> | 82041100     |

- Solution to the extraneous rust problem: fasten stainless screws with stainless tools
- For socket head screws
- Hex-Plus allows socket head screws to live longer
- Hexagonal ballpoint on the long arm
- Imperial

High quality L-keys out of stainless steel for imperial hexagonal socket screws by Wera. Stainless steel prevents the formation of extraneous rust. The Hex-Plus profile offers a larger contact surface within the screw head. This reduces the notching effects to a minimum and almost completely eliminates the risk of destroying the screw recess. Hexagonal ballpoint end on the long arm: the ballpoint drive profile means that it is possible to swivel the tool axis away from the screwdriving axis, thus enabling "round the corner" screwdriving.



#### Web link

[https://products.wera.de/en/l-keys\\_l-keys\\_for\\_hexagon\\_socket\\_screws\\_3950\\_pkl\\_inch.html](https://products.wera.de/en/l-keys_l-keys_for_hexagon_socket_screws_3950_pkl_inch.html)

Wera - 3950 PKL inch  
05022718001 - 4013288117236

Wera Werkzeuge GmbH  
Korzter Straße 21-25  
D-42349 Wuppertal  
Tel: +49 (0)2 02 / 40 45-0  
E-Mail: [info@wera.de](mailto:info@wera.de)

## L-Keys for Hexagon Socket Screws

### Stainless L-keys



Stainless L-keys are hardened to the same strength as conventional (carbon) steel tools, and prevent extraenous rust forming.

### Vacuum ice-hardened



The stainless steel tools from Wera are vacuum ice-hardened and have the hardness and strength needed for screw connections. There are no limitations to the industrial applications they are suitable for.

### Hex-Plus



Hexagon screws can endure a problem because the contact surfaces delivering the power from the conventional tool, is transferred to the screw via very small surface areas. The consequence: the screw can become damaged (rounding out). Hex-Plus tools have a greater contact surface that prevents this from happening! At the same time, as much as 20 % more torque can be applied. Good to know: Hex-Plus tools fit into every standard hexagon socket screw!

### Ball tip



The spherical drive profile means that it is possible to swivel the axis of the tool to that of the screw, and therefore enable angled, "around-the-corner" screwdriving jobs.

## Size identification



The size of each L-keys has been engraved by a laser. In addition Take it easy L-keys have a colour coding according to sizes - for simple and rapid accessing of the required tool. Making it easy to find the right tool.

### Web link






[https://products.wera.de/en/l-keys\\_l-keys\\_for\\_hexagon\\_socket\\_screws\\_3950\\_pkl\\_inch.html](https://products.wera.de/en/l-keys_l-keys_for_hexagon_socket_screws_3950_pkl_inch.html)

Wera - 3950 PKL inch  
05022718001 - 4013288117236

Wera Werkzeuge GmbH  
Korzter Straße 21-25  
D-42349 Wuppertal  
Tel: +49 (0)2 02 / 40 45-0  
E-Mail: [info@wera.de](mailto:info@wera.de)

L-Keys for Hexagon Socket Screws

Further versions in this product family:

|                    | <br>inch | <br>mm | <br>mm | <br>inch | <br>inch |
|--------------------|---|---|---|---|---|
| 05022710001        | 3/32"   | 112   | 19  | 4 7/16"   | 3/4"  |
| 05022711001        | 7/64"   | 119   | 20  | 4 3/4"  | 25/32"  |
| 05022712001        | 1/8"  | 123   | 21  | 4 7/8"  | 27/32"  |
| 05022713001        | 9/64"   | 130   | 22  | 5 3/16"   | 29/32"  |
| 05022714001        | 5/32"   | 137   | 24  | 5 3/8"  | 1"  |
| 05022715001        | 3/16"   | 154   | 27  | 6 1/16"   | 1 1/16"   |
| 05022716001        | 1/4"  | 185   | 34  | 7 1/4"  | 1 5/16"   |
| 05022717001        | 5/16"   | 195   | 37  | 7 11/16"  | 1 7/16"   |
| <b>05022718001</b> | <b>3/8"</b>   | <b>224</b>  | <b>42</b>   | <b>9"</b>   | <b>1 11/16"</b>   |

Web link

[https://products.wera.de/en/l-keys\\_l-keys\\_for\\_hexagon\\_socket\\_screws\\_3950\\_pkl\\_inch.html](https://products.wera.de/en/l-keys_l-keys_for_hexagon_socket_screws_3950_pkl_inch.html)

Wera - 3950 PKL inch  
05022718001 - 4013288117236

Wera Werkzeuge GmbH  
Korzter Straße 21-25  
D-42349 Wuppertal  
Tel: +49 (0)2 02 / 40 45-0  
E-Mail: info@wera.de