



<b>EAN:</b>	4013288224750	<b>Size:</b>	170x70x30 mm
<b>Part number:</b>	05020314001	<b>Weight:</b>	271 g
<b>Article number:</b>	6005 Joker 4 Set 1	<b>Country of origin:</b>	CZ
		<b>Customs tariff number:</b>	82041100

- Joker open-ended and combination wrenches and in a new clip for space-saving storage in the tool bag
- Especially suitable for tight spaces
- The special open end geometry expands the placement possibilities of the tool
- The low return angle in the open end "takes" the screw every 15°

As installation spaces become increasingly confined, it is necessary that tools enable users to work successfully even in such situations. Narrow spaces require additional placement points of the tool. Can spanners be modified to increase the placement possibilities of the tool? The combination of the 7.5° offset open end and the double hexagon geometry doubles the placement points. A repeated 180° turn of the wrench around the longitudinal axis during screwdriving provides four placement possibilities, and bolts or screw heads can be engaged every 15°. The Joker 6005 with its smart open end geometry significantly expands the range of uses in confined spaces. The Joker 6005 will automatically find the respective placement point after every turn. The high-quality surface treatment achieves long-lasting corrosion protection. With Take it easy tool finder: Colour coding by size. The wear-free material of the clip guarantees easy removal and a secure hold of the spanners.

**Web link**

<https://www.wera.de/en/05020314001>

Wera - 6005 Joker 4 Set 1  
 05020314001 - 4013288224750

Wera Werkzeuge GmbH  
 Korzter Straße 21-25  
 D-42349 Wuppertal  
 Tel: +49 (0)2 02 / 40 45-0  
 E-Mail: [info@wera.de](mailto:info@wera.de)

**Secure hold and easy removal**



Compact



The wear-free material of the clip guarantees easy removal and a secure hold of the spanners.

**For very tight spaces**



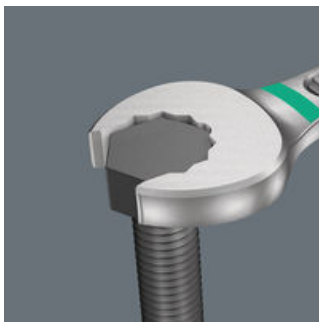
The Joker 6005 double open end wrench with its special open end design - a 7.5° offset open end and double hexagonal geometry - doubles the placement points at a repeated 180° rotation of the wrench around the longitudinal axis. Bolts and screw heads can be engaged every 15°. The Joker 6005 will automatically find the respective placement point after every turn.

**For return angles of less than 30°**



Thanks to the 7.5° offset open end, the double hexagonal geometry and an improved application method (placement - screwdriving - rotation - re-placement - screwdriving - rotation etc), even screwdriving situations that have a return angle of less than 30° can be solved.

**Double-hex geometry**



The double hexagonal geometry of the open end of the Joker 6005 double open end wrench ensures the positive connection with the screw head or the bolt and reduces the risk of slipping.

**Take it easy tool finder**



Take it easy tool finder system - with profile and size colour-coding for quick and easy tool selection. Colour-coded system for hexagon drive screws (L-Keys, Zyklop bit sockets), external hex drive screws and nuts (Joker wrenches, Zyklop sockets and Zyklop bit sockets with holding function), and TORX® drive screws (L-Keys, Zyklop bit sockets).

**Web link**

<https://www.wera.de/en/05020314001>

Wera - 6005 Joker 4 Set 1  
05020314001 - 4013288224750

Wera Werkzeuge GmbH  
Korzter Straße 21-25  
D-42349 Wuppertal  
Tel: +49 (0)2 02 / 40 45-0  
E-Mail: [info@wera.de](mailto:info@wera.de)

**Set contents:**

**6005 Joker Double open end wrench, 6 x 7 x 111.8 mm**



05020310001	1x	6 x 7 x 111.8 mm
05020311001	1x	8 x 9 x 122.2 mm
05020312001	1x	10 x 11 x 137.3 mm
05020313001	1x	12 x 13 x 166 mm

**Web link**

<https://www.wera.de/en/05020314001>

Wera - 6005 Joker 4 Set 1  
05020314001 - 4013288224750

Wera Werkzeuge GmbH  
Korzter Straße 21-25  
D-42349 Wuppertal  
Tel: +49 (0)2 02 / 40 45-0  
E-Mail: [info@wera.de](mailto:info@wera.de)