

334 SK/6 Rack Screwdriver set Kraftform Plus Lasertip and rack, 6 pieces

Kraftform Plus – Series 300



EAN:	4013288111418	Size:	285x210x55 mm
Part number:	05007680001	Weight:	729 g
Article number:	334 SK/6	Country of origin:	CZ
		Customs tariff number:	82054000

- Screwdriver for slotted and cross-recess screws, Phillips
- Smooth hard zones for high speed turning, soft grip zones for high torque transfer
- Take it easy tool finder: colour coding according to profile and size
- Hexagonal blade and bolster for higher torque transfer
- Lasertip tips for more secure fit in the screw head

6-piece screwdriver set with Kraftform Plus handle for pleasant, ergonomic working that makes blisters and calluses a thing of the past. Hard gripping zones for high working speeds whereas soft zones ensure high torque transfer. The Lasertip tip literally bites into the head of the screw and thereby prevents any slipping. More torque can be transferred with the help of an open-end or ring spanner applied to the hexagonal blade and the integrated bolster. "Take it easy" Tool Finder: colour coding according to profile and size. The hexagonal anti-roll feature prevents any bothersome rolling away at the workplace. Including a practical rack for tidy storage of the screwdrivers.

Web link

https://products.wera.de/en/screwdrivers_kraftform_plus_series_300_334_sk_6.html

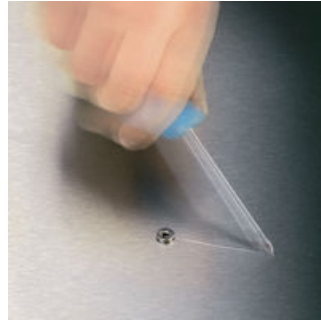
Wera - 334 SK/6
05007680001 - 4013288111418

Wera Werkzeuge GmbH
Korzterter Straße 21-25
D-42349 Wuppertal
Tel: +49 (0)2 02 / 40 45-0
E-Mail: info@wera.de

Lasertip prevents slipping out



Kraftform Plus screwdrivers - ergonomics you can grasp. They relieve the entire hand-arm system even when used intensively. Along with other technical and product advantages such as the Lasertip for a secure fit in the screw head, Kraftform screwdrivers are the ideal choice whenever manual screwdriving jobs are concerned.



It happens time and time again that the tip slips out of the screw head when screwdriving, sometimes damaging valuable surfaces or even causing injury. The tips of the Wera Lasertip screwdrivers are microscopically roughened by means of a laser. This rough surface literally "bites" itself firmly into the screw head. Slipping out becomes a thing of the past.

Lasertip



A precisely-focused laser creates a sharp-edged surface structure. Wera Lasertip "bites" itself into the screw head and prevents any slips out of the recess. It is available for screwdrivers for slotted, Phillips and Pozidriv screws.

Reduced contact pressure



Wera Lasertip reduces the contact pressure required and enhances force transfer - meaning less screwdriving effort is required. Screwdriving becomes safer and easier.

Web link

https://products.wera.de/en/screwdrivers_kraftform_plus_series_300_334_sk_6.html

Wera - 334 SK/6
05007680001 - 4013288111418

Wera Werkzeuge GmbH
Korzter Straße 21-25
D-42349 Wuppertal
Tel: +49 (0)2 02 / 40 45-0
E-Mail: info@wera.de

Kraftform Plus – Series 300

Hexagonal blade and bolster



Hexagonal blade and bolster for higher torque transfer.

Kraftform



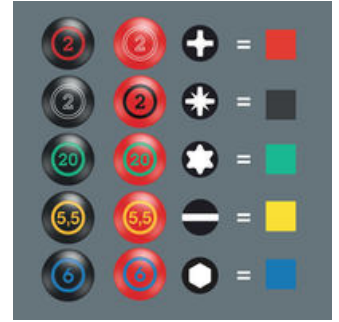
The basic idea for the prototype of the Kraftform handle - that the hand should dictate the design - has, right through to today, proved to be correct. In cooperation with the internationally recognised Fraunhofer IAO Institute, Wera developed a screwdriver handle designed to match the shape of the human hand as long ago as the 1960s. After a long development phase, the Wera Kraftform handle was launched to the market in 1968. It has been optimised through the years with new technologies, but has kept its proven shape. After all, the human hand has not changed either.

Rapid hand repositioning



The hard materials used for the handle ensure rapid hand repositioning without any danger of the skin "sticking" to the handle. The surrounding hard zones with large diameters glide like wheels through the hand.

"Take it easy" Tool Finder



Screwdrivers with "Take it easy" tool finder: colour coding according to profile and size stamp.

Web link

https://products.wera.de/en/screwdrivers_kraftform_plus_series_300_334_sk_6.html

Wera - 334 SK/6
05007680001 - 4013288111418

Wera Werkzeuge GmbH
Korzter Straße 21-25
D-42349 Wuppertal
Tel: +49 (0)2 02 / 40 45-0
E-Mail: info@wera.de

334 SK/6 Rack Screwdriver set Kraftform Plus Lasertip and rack, 6 pieces

Kraftform Plus – Series 300



Set contents:

350 SK PH Screwdriver for Phillips screws, PH 1 x 80 mm



05008751001	1x	PH 1 x 80 mm
05008752001	1x	PH 2 x 100 mm

334 SK Screwdriver for slotted screws, 0.6 x 3.5 x 75 mm



05007670001 ¹⁾	1x	0.6 x 3.5 x 75 mm
05007671001	1x	0.8 x 4 x 90 mm
05007673001	1x	1 x 5.5 x 100 mm
05007674001	1x	1.2 x 6.5 x 125 mm

1) without Lasertip

Web link

https://products.wera.de/en/screwdrivers_kraftform_plus_series_300_334_sk_6.html

Wera - 334 SK/6
05007680001 - 4013288111418

Wera Werkzeuge GmbH
Korzter Straße 21-25
D-42349 Wuppertal
Tel: +49 (0)2 02 / 40 45-0
E-Mail: info@wera.de