



<b>EAN:</b>	4013288227256	<b>Size:</b>	96x43x20 mm
<b>Part number:</b>	05005504001	<b>Weight:</b>	56 g
<b>Article number:</b>	8790 B Impaktor	<b>Country of origin:</b>	TW
		<b>Customs tariff number:</b>	82042000

- For use with electric or pneumatic wrenches with 3/8" drive
- Impaktor technology for above-average service life
- Hexagonal profile enables precise and profile-preserving screwdriving with high power transmission
- With Take it easy tool finder: colour coding by size
- With cross-bore and ring socket for securing locking pin and locking ring of machine-operated tools

Impaktor socket wrench insert for use with electric or pneumatic wrenches with 3/8" drive. The Impaktor technology ensures a higher-than-average service life even at extreme requirements. With "Take it easy" Tool finder with colour coding by size - for quick and easy identification of the required tool. With hexagon profile and socket with hole. The hexagon profile offers the transmission of high forces and loads the edges of the bolt or the screw head less than a double hexagon profile. For external hexagon bolts and screws.

**Web link**

[https://products.wera.de/en/ratchets\\_and\\_accessories\\_the\\_zyklop\\_ratchets\\_the\\_zyklop\\_ratchets\\_3\\_8\\_zyklop\\_accessories\\_3\\_8\\_8790\\_b\\_impaktor.html](https://products.wera.de/en/ratchets_and_accessories_the_zyklop_ratchets_the_zyklop_ratchets_3_8_zyklop_accessories_3_8_8790_b_impaktor.html)

Wera - 8790 B Impaktor  
05005504001 - 4013288227256

Wera Werkzeuge GmbH  
Korzter Straße 21-25  
D-42349 Wuppertal  
Tel: +49 (0)2 02 / 40 45-0  
E-Mail: info@wera.de

Zyklop Accessories, 3/8"

**For electric or pneumatic impact wrenches**



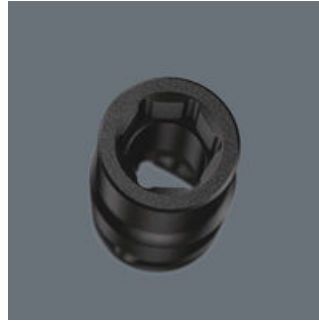
The Impaktor technology ensures above-average service life of the Impaktor socket wrench plug-ins even under extreme conditions.

**Cross-bore and ring socket**



Due to the groove and the ring socket, the tool can be secured with a locking pin or O-ring on the power tool.

**Profile-friendly power transmission**



The hexagon profile allows the transmission of high forces and puts less strain on the edges of bolts or screw heads than a double hexagon profile. Fine-toothed ratchets also make the use of a double hexagon profile superfluous, even in confined spaces, thanks to their small return angle.

**Take it easy tool finder system**



Take it easy tool finder system - with profile and size colour-coding for quick and easy tool selection. Colour-coded system for hexagon drive screws (L-Keys, Zyklop bit sockets), external hex drive screws and nuts (Joker wrenches, Zyklop sockets and Zyklop bit sockets with holding function), and TORX® drive screws (L-Keys, Zyklop bit sockets).






**Web link**

[https://products.wera.de/en/ratchets\\_and\\_accessories\\_the\\_zyklop\\_ratchets\\_the\\_zyklop\\_ratchets\\_3\\_8\\_zyklop\\_accessories\\_3\\_8\\_8790\\_b\\_impaktor.html](https://products.wera.de/en/ratchets_and_accessories_the_zyklop_ratchets_the_zyklop_ratchets_3_8_zyklop_accessories_3_8_8790_b_impaktor.html)

Wera - 8790 B Impaktor  
05005504001 - 4013288227256

Wera Werkzeuge GmbH  
Korzter Straße 21-25  
D-42349 Wuppertal  
Tel: +49 (0)2 02 / 40 45-0  
E-Mail: [info@wera.de](mailto:info@wera.de)

Further versions in this product family:

						
		mm	inch	mm	mm	mm
05005500001	luminous pink	8.0	-	30.0	14.1	19.0
05005501001	leuchtgelb_yellowC	10.0	-	30.0	16.6	19.0
05005502001	cyan_2985C	11.0	-	30.0	17.8	19.0
05005503001	schwarz_blackC	12.0	-	30.0	18.2	19.0
<b>05005504001</b>	<b>tuerkis_339C</b>	<b>13.0</b>	-	<b>30.0</b>	<b>20.0</b>	<b>22.0</b>
05005505001	pink_241C	14.0	-	30.0	21.0	22.0
05005506001	weiss	15.0	-	30.0	22.0	22.0
05005507001	violett_2735C	16.0	-	30.0	22.0	24.0
05005508001	rot_200C	17.0	-	30.0	23.0	25.0
05005509001	gruen_363C	18.0	-	30.0	23.0	26.0
05005510001	blau_307C	19.0	-	30.0	25.0	27.8
05005511001	gruen_363C	21.0	-	32.0	27.0	30.0
05005512001	gelb_123C	22.0	-	32.0	28.0	32.0
05005513001	cyan_2985C	24.0	-	32.0	30.0	34.0
05005514001	gelb_123C	-	1/4"	30.0	11.0	19.0
05005515001	blau_307C	-	5/16"	30.0	14.1	19.0
05005516001	rot_200C	-	3/8"	30.0	16.6	19.0
05005517001	violett_2735C	-	7/16"	30.0	17.8	19.0
05005518001	tuerkis_339C	-	1/2"	30.0	20.0	22.0
05005519001	pink_241C	-	9/16"	30.0	21.0	22.0
05005520001	schwarz_blackC	-	5/8"	30.0	22.0	24.0
05005521001	cyan_2985C	-	11/16"	30.0	23.0	25.0
05005522001	gelb_123C	-	3/4"	30.0	25.0	28.0
05005523001	blau_307C	-	13/16"	32.0	27.0	30.0
05005524001	leuchtgruen_375C	-	7/8"	32.0	28.0	32.0
05005525001	rot_200C	-	15/16"	32.0	30.0	34.0
05005526001	tuerkis_339C	-	1"	32.0	32.0	36.0

## Web link

[https://products.wera.de/en/ratchets\\_and\\_accessories\\_the\\_zyklop\\_ratchets\\_the\\_zyklop\\_ratchets\\_3\\_8\\_zyklop\\_accessories\\_3\\_8\\_8790\\_b\\_impaktor.html](https://products.wera.de/en/ratchets_and_accessories_the_zyklop_ratchets_the_zyklop_ratchets_3_8_zyklop_accessories_3_8_8790_b_impaktor.html)

Wera - 8790 B Impaktor  
05005504001 - 4013288227256

Wera Werkzeuge GmbH  
Korzter Straße 21-25  
D-42349 Wuppertal  
Tel: +49 (0)2 02 / 40 45-0  
E-Mail: info@wera.de