



<b>EAN:</b>	4013288227546	<b>Size:</b>	377x80x37 mm
<b>Part number:</b>	05005451001	<b>Weight:</b>	990 g
<b>Article number:</b>	9607	<b>Country of origin:</b>	TW
		<b>Customs tariff number:</b>	82042000

- 10-piece socket set on socket rail, 3/8"
- Magnetic rail with secure socket mounting and yet easy removal (twist-to-unlock) for temporary attachment on wall, shelf or workshop trolley
- Smooth rotary mechanism for a secure hold and easy access of the tools
- For use with electric or pneumatic wrenches with 3/8" drive
- Impaktor technology for above-average service life
- Hexagon profile allows precise and profile-friendly screwdriving with high power transmission
- With cross hole and ring socket to attach the safety pin and safety ring of machine operated tools

Socket rail with 10 Impaktor socket wrenches for use with electric or pneumatic wrenches with 3/8" drive. The Impaktor technology ensures a higher-than-average service life even at extreme requirements. The hexagon profile used allows a high power transmission while simultaneously being precise and protecting the profile. With Take it easy Tool finder with colour coding by size - for quick and easy identification of the required tool. The rail allows temporary attachment to metallic surfaces and, with its twist-to-unlock function, ensures secure locking and unlocking of the sockets.


**Web link**
<https://www.wera.de/en/05005451001>
**Wera - 9607**

05005451001 - 4013288227546

**Wera Werkzeuge GmbH**

Korzter Straße 21-25

D-42349 Wuppertal

Tel: +49 (0)2 02 / 40 45-0

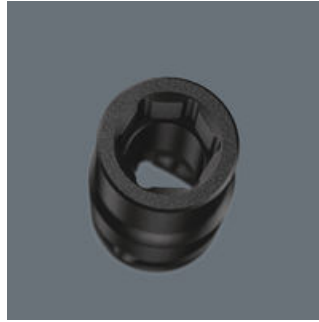
E-Mail: [info@wera.de](mailto:info@wera.de)

**For electric or pneumatic wrenches**



The Impaktor technology ensures above-average service life of the Impaktor socket wrench plug-ins even under extreme conditions.

**Profile-friendly power transmission**



The hexagon profile offers the transmission of high forces and loads the edges of the bolt or the screw head less than a double hexagon profile. Fine-toothed ratchets also make use of a double hexagon profile superfluous, even in confined spaces, thanks to their small return angle.

**Cross hole and ring socket**



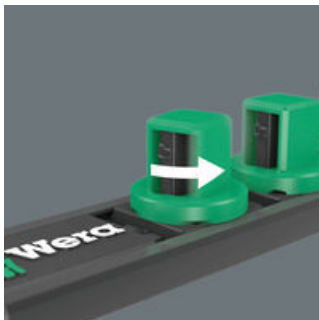
Thanks to the hole and the ring socket, the tools can be held securely on the power tool with a safety pin or an O-ring.

**Take it easy tool finder system**



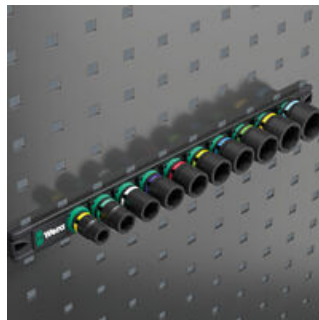
Take it easy tool finder system - with profile and size colour-coding for quick and easy tool selection. Colour-coded system for hexagon drive screws (L-Keys, Zyklop bit sockets), external hex drive screws and nuts (Joker wrenches, Zyklop sockets and Zyklop bit sockets with holding function), and TORX® drive screws (L-Keys, Zyklop bit sockets).

**Twist-to-unlock mechanism**



With its twist-to-unlock mechanism, the socket rail ensures easy access of the sockets. At the same time the sockets are held securely.

**Magnetic**



Thanks to the magnet, the rail is suitable for temporary attachment to the wall, shelf or workshop trolley.

**Web link**

<https://www.wera.de/en/05005451001>

Wera - 9607

05005451001 - 4013288227546

Wera Werkzeuge GmbH

Korzter Straße 21-25

D-42349 Wuppertal

Tel: +49 (0)2 02 / 40 45-0

E-Mail: [info@wera.de](mailto:info@wera.de)

Set contents:

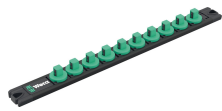
8790 B Impaktor socket with 3/8" drive, 10 x 30 mm



05005501001	1x	10 x 30 mm
05005504001	1x	13 x 30 mm
05005506001	1x	15 x 30 mm
05005507001	1x	16 x 30 mm
05005508001	1x	17 x 30 mm
05005509001	1x	18 x 30 mm
05005510001	1x	19 x 30 mm
05005511001	1x	21 x 32 mm
05005512001	1x	22 x 32 mm
05005513001	1x	24 x 32 mm

9603 Impaktor socket rail, 1/2", empty, 30 x 340 mm

1x 30 x 340 mm



Web link

<https://www.wera.de/en/05005451001>

Wera - 9607

05005451001 - 4013288227546

Wera Werkzeuge GmbH

Korzter Straße 21-25

D-42349 Wuppertal

Tel: +49 (0)2 02 / 40 45-0

E-Mail: [info@wera.de](mailto:info@wera.de)