



<b>EAN:</b>	4013288223210	<b>Size:</b>	275x75x35 mm
<b>Part number:</b>	05005410001	<b>Weight:</b>	529 g
<b>Article number:</b>	Socket Rail A Deep 1	<b>Country of origin:</b>	TW
		<b>Customs tariff number:</b>	82042000

- 9-piece socket set on socket rail, 1/4"
- Magnetic rail with secure socket mounting and yet easy removal (twist-to-unlock) for temporary attachment on wall, shelf or workshop trolley
- Smooth rotary mechanism for a secure hold and easy access of the tools
- Long 1/4" socket for low-profile-fitting screw connections in tight construction spaces and for protruding threaded rods
- Hexagon profile allows precise and profile-friendly screwdriving with high power transmission
- For manual and power tool operations (non-impact)
- Equipped with ball stop groove, knurling at lower end for better gripping

Socket rail with 9 long manual and machine sockets (non-impact), 1/4". A smooth rotary mechanism allows a secure hold and easy access of the sockets. Long 1/4" manual and machine sockets (ISO 2725 part 3) by Wera for manual and (non-impact) machine use even at low lying couplings and protruding thread rods. With Take it easy tool finder with colour coding by size - to help you find the required tool quickly and easily. Slip-proof for easy grip even with oily hands. With hexagon profile and ball stop groove. The hexagon profile enables the transmission of high forces and loads the edges of the bolt or the screw head less than a double hexagon profile. Fine-teethed ratchets also make use of a double hexagon profile superfluous, even in confined spaces, thanks to their small return angle. For external hexagon bolts and screws. The rail allows temporary attachment to metallic surfaces and, with its twist-to-unlock function, ensures secure locking and unlocking of the sockets.

**Web link**  
<https://www.wera.de/en/05005410001>

Wera - Socket Rail A Deep 1  
 05005410001 - 4013288223210

Wera Werkzeuge GmbH  
 Korzter Straße 21-25  
 D-42349 Wuppertal  
 Tel: +49 (0)2 02 / 40 45-0  
 E-Mail: info@wera.de



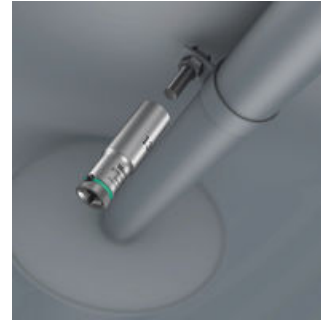
Wera Belts

**Manual and machine sockets**



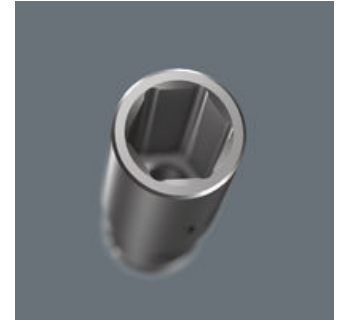
The manual and machine sockets can be used both for hand and power tools use (non-impact). Users need just one socket set for all applications.

**Long design**



Thanks to the long design of the sockets, even couplings in tight spaces can be reached. Screwdriving at protruding thread rods can also be possible.

**Profile-friendly power transmission**



The hexagon profile offers the transmission of high forces and loads the edges of the bolt or the screw head less than a double hexagon profile. Fine-toothed ratchets also make use of a double hexagon profile superfluous, even in confined spaces, thanks to their small return angle.

**Knurling**



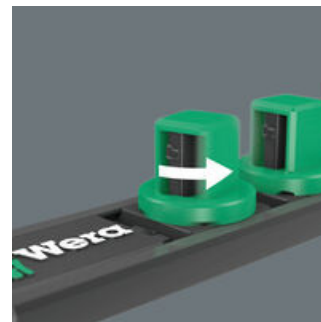
Knurling on lower end for more grip when used manually.

**Take it easy tool finder system**



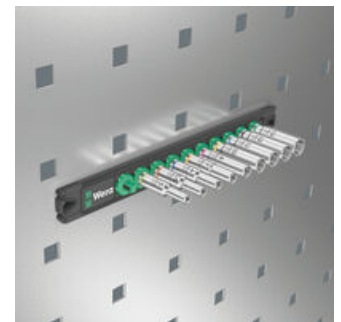
Take it easy tool finder system - with profile and size colour-coding for quick and easy tool selection. Colour-coded system for hexagon drive screws (L-Keys, Zyklus bit sockets), external hex drive screws and nuts (Joker wrenches, Zyklus sockets and Zyklus bit sockets with holding function), and TORX® drive screws (L-Keys, Zyklus bit sockets).

**Twist-to-unlock mechanism**



With its twist-to-unlock mechanism, the socket rail ensures easy access of the sockets. At the same time the sockets are held securely.

**Magnetic**



Thanks to the magnet, the rail is suitable for temporary attachment to the wall, shelf or workshop trolley.

**Web link**

<https://www.wera.de/en/05005410001>

Wera - Socket Rail A Deep 1  
05005410001 - 4013288223210

Wera Werkzeuge GmbH  
Korzter Straße 21-25  
D-42349 Wuppertal  
Tel: +49 (0)2 02 / 40 45-0  
E-Mail: [info@wera.de](mailto:info@wera.de)

## Magnetic socket rail A Deep 1 socket set, 1/4" drive, 9 pieces

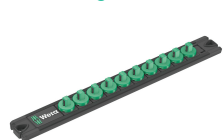
### Set contents:

#### 8790 HMA Deep 1/4" socket, 5 x 50 mm



05004501001	1x	5 x 50 mm
05004502001	1x	5.5 x 50 mm
05004503001	1x	6 x 50 mm
05004504001	1x	7 x 50 mm
05004505001	1x	8 x 50 mm
05004507001	1x	10 x 50 mm
05004508001	1x	11 x 50 mm
05004509001	1x	12 x 50 mm
05004510001	1x	13 x 50 mm

#### 9600 Magnetic socket rail, 1/4", empty, 30 x 270 mm



05136420001	1x	30 x 270 mm
-------------	----	-------------

#### Web link

<https://www.wera.de/en/05005410001>

Wera - Socket Rail A Deep 1  
05005410001 - 4013288223210

Wera Werkzeuge GmbH  
Korzter Straße 21-25  
D-42349 Wuppertal  
Tel: +49 (0)2 02 / 40 45-0  
E-Mail: [info@wera.de](mailto:info@wera.de)