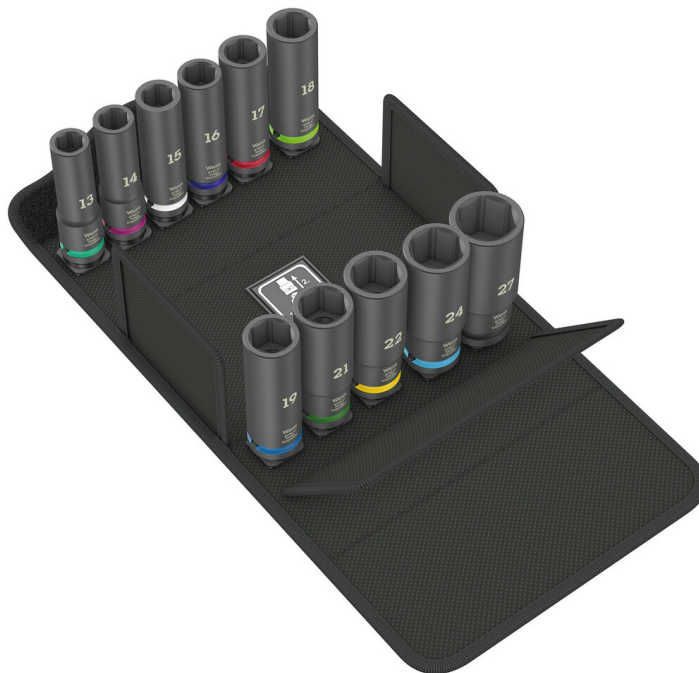


8790 C Impaktor Deep Set 1, 11 pieces

Zyklop Accessories, 1/2"



EAN:	4013288224088	Size:	235x120x100 mm
Part number:	05004841001	Weight:	2976 g
Article number:	8790 C Impaktor Deep Set 1	Country of origin:	TW
		Customs tariff number:	82042000

- Long 1/2" sockets for low-profile-fitting screw connections in tight construction spaces and for protruding threaded rods
- For use with electric or pneumatic powered impact wrenches with 12.5mm = 1/2" drive
- Impaktor technology for above-average service life
- Hexagonal profile enables precise and profile-preserving screwdriving with high power transmission
- With cross-bore and ring socket for securing locking pin and locking ring of machine-operated tools
- With Take it easy" tool finder: colour coding by size

Set with 11 Impaktor Deep sockets for use with electric or pneumatic wrenches with 12.5 mm = 1/2" drive. Long design for low-lying couplings and protruding thread rods. The Impaktor technology ensures a higher-than-average service life even at extreme requirements. The hexagon profile used allows a high power transmission while simultaneously being precise and protecting the profile. With "Take it easy" tool finder with colour coding by size - for quick and easy identification of the required tool .

Web link

https://products.wera.de/en/ratchets_and_accessories_the_zyklop_ratchets_the_zyklop_ratchets_1_2_zyklop_accessories_1_2_8790_c_impaktor_deep_set_1.html

Wera - 8790 C Impaktor Deep Set 1
05004841001 - 4013288224088

Wera Werkzeuge GmbH
Korzter Straße 21-25
D-42349 Wuppertal
Tel: +49 (0)2 02 / 40 45-0
E-Mail: info@wera.de

Zyklop Accessories, 1/2"

For electric or pneumatic impact wrenches



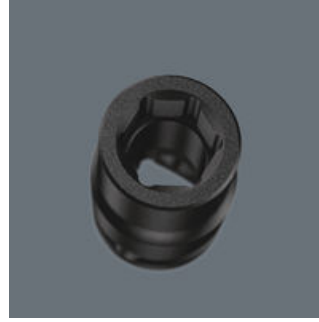
The extremely robust forged design ensures that the Impaktor sockets have an above-average service life, even under extreme conditions.

Long design



Due to the long design of the socket, screwdriving can also be achieved in small spaces. Fittings with protruding threaded rods are often also possible.

Profile-friendly power transmission



The hexagon profile allows the transmission of high forces and puts less strain on the edges of bolts or screw heads than a double hexagon profile. Fine-toothed ratchets also make the use of a double hexagon profile superfluous, even in confined spaces, thanks to their small return angle.

Cross-bore and ring socket



Due to the groove and the ring socket, the tool can be secured with a locking pin or O-ring on the power tool.

Secure hold and easy removal



The all new smooth turning mechanism guarantees both secure and rattle-free storage, yet allows easy removal of the tool.

Take it easy tool finder system



Take it easy tool finder system - with profile and size colour-coding for quick and easy tool selection. Colour-coded system for hexagon drive screws (L-Keys, Zyklop bit sockets), external hex drive screws and nuts (Joker wrenches, Zyklop sockets and Zyklop bit sockets with holding function), and TORX® drive screws (L-Keys, Zyklop bit sockets).

Web link

https://products.wera.de/en/ratchets_and_accessories_the_zyklop_ratchets_the_zyklop_ratchets_1_2_zyklop_accessories_1_2_8790_c_impaktor_deep_set_1.html

Wera - 8790 C Impaktor Deep Set 1
05004841001 - 4013288224088

Wera Werkzeuge GmbH
Korzter Straße 21-25
D-42349 Wuppertal
Tel: +49 (0)2 02 / 40 45-0
E-Mail: info@wera.de

8790 C Impaktor Deep Set 1, 11 pieces

Zyklop Accessories, 1/2"



Set contents:

8790 C Impaktor Deep socket with 1/2" drive, 13 x 83 mm



05004830001	1x	13 x 83 mm
05004831001	1x	14 x 83 mm
05004832001	1x	15 x 83 mm
05004833001	1x	16 x 83 mm
05004834001	1x	17 x 83 mm
05004835001	1x	18 x 83 mm
05004836001	1x	19 x 83 mm
05004837001	1x	21 x 83 mm
05004838001	1x	22 x 83 mm
05004839001	1x	24 x 83 mm
05004840001	1x	27 x 83 mm

Web link

https://products.wera.de/en/ratchets_and_accessories_the_zyklop_ratchets_the_zyklop_ratchets_1_2_zyklop_accessories_1_2_8790_c_impaktor_deep_set_1.html

Wera - 8790 C Impaktor Deep Set 1
05004841001 - 4013288224088

Wera Werkzeuge GmbH
Korzter Straße 21-25
D-42349 Wuppertal
Tel: +49 (0)2 02 / 40 45-0
E-Mail: info@wera.de