

8790 C Impaktor Deep socket with 1/2" drive, 22 x 83 mm

Zyklop Accessories, 1/2"



EAN:	4013288222107	Size:	150x42x32 mm
Part number:	05004838001	Weight:	268 g
Article number:	8790 C Impaktor Deep	Country of origin:	TW
		Customs tariff number:	82042000

- Robust Impaktor socket wrench inserts for extremely high stress; for use with electric or pneumatic wrenches with 12.5 mm = 1/2" drive
- Long socket wrenches for low-lying couplings, also suitable for fitting, protruding thread rods in confined spaces
- Hexagon profile for precise and profile-friendly screwdriving at a high power transmission
- With Take it easy tool finder: colour coding by size
- With cross-bore and ring socket for securing locking pin and locking ring of machine-operated tools

Long Impaktor socket wrench insert for use with electric or pneumatic wrenches with 12.5 mm = 1/2" drive. Also usable at low-lying couplings and protruding thread rods. The Impaktor technology ensures a higher-than-average service life even at extreme requirements. With "Take it easy" tool finder with colour coding by size - for quick and easy identification of the required tool. With hexagon profile and socket with hole. The hexagon profile offers the transmission of high forces and loads the edges of the bolt or the screw head less than a double hexagon profile. For external hexagon bolts and screws.

Web link

https://products.wera.de/en/ratchets_and_accessories_the_zyklop_ratchets_the_zyklop_ratchets_1_2_zyklop_accessories_1_2_8790_c_impaktor_deep.html

Wera - 8790 C Impaktor Deep
05004838001 - 4013288222107

Wera Werkzeuge GmbH
Korzter Straße 21-25
D-42349 Wuppertal
Tel: +49 (0)2 02 / 40 45-0
E-Mail: info@wera.de

Zyklop Accessories, 1/2"

For electric or pneumatic impact wrenches



The extremely robust forged design ensures that the Impaktor sockets have an above-average service life, even under extreme conditions.

Long design



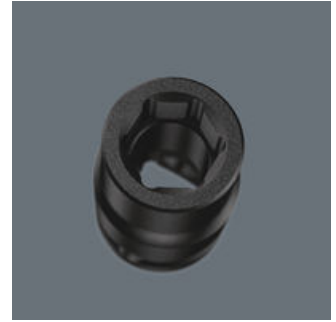
Due to the long design of the socket, screwdriving can also be achieved in small spaces. Fittings with protruding threaded rods are often also possible.

Cross-bore and ring socket



Due to the groove and the ring socket, the tool can be secured with a locking pin or O-ring on the power tool.

Profile-friendly power transmission



The hexagon profile allows the transmission of high forces and puts less strain on the edges of bolts or screw heads than a double hexagon profile. Fine-toothed ratchets also make the use of a double hexagon profile superfluous, even in confined spaces, thanks to their small return angle.

Take it easy tool finder system



Take it easy tool finder system - with profile and size colour-coding for quick and easy tool selection. Colour-coded system for hexagon drive screws (L-Keys, Zyklop bit sockets), external hex drive screws and nuts (Joker wrenches, Zyklop sockets and Zyklop bit sockets with holding function), and TORX® drive screws (L-Keys, Zyklop bit sockets).



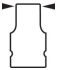

Web link

https://products.wera.de/en/ratchets_and_accessories_the_zyklop_ratchets_the_zyklop_ratchets_1_2_zyklop_accessories_1_2_8790_c_impaktor_deep.html

Wera - 8790 C Impaktor Deep
05004838001 - 4013288222107

Wera Werkzeuge GmbH
Korzter Straße 21-25
D-42349 Wuppertal
Tel: +49 (0)2 02 / 40 45-0
E-Mail: info@wera.de

Further versions in this product family:

					
		mm	mm	mm	mm
05004830001	tuerkis_339C	13.0	83	21.0	24.0
05004831001	pink_241C	14.0	83	22.0	24.0
05004832001	weiss	15.0	83	24.0	24.0
05004833001	violett_2735C	16.0	83	24.0	24.0
05004834001	rot_200C	17.0	83	26.0	26.0
05004835001	leichtgruen_375C	18.0	83	28.0	28.0
05004836001	blau_307C	19.0	83	28.0	28.0
05004837001	gruen_363C	21.0	83	30.0	27.0
05004838001	leuchtgelb_yellowC	22.0	83	32.0	28.0
05004839001	cyan_2985C	24.0	83	34.0	30.0
05004840001	schwarz_blackC	27.0	83	38.0	33.0

Web link

https://products.wera.de/en/ratchets_and_accessories_the_zyklop_ratchets_the_zyklop_ratchets_1_2_zyklop_accessories_1_2_8790_c_impaktor_deep.html

Wera - 8790 C Impaktor Deep
05004838001 - 4013288222107

Wera Werkzeuge GmbH
Korzter Straße 21-25
D-42349 Wuppertal
Tel: +49 (0)2 02 / 40 45-0
E-Mail: info@wera.de