



EAN:	4013288210555	Size:	320x100x50 mm
Part number:	05004545001	Weight:	1022 g
Article number:	Belt B Deep 1	Country of origin:	TW
		Customs tariff number:	82042000

- 9-piece socket set on robust textile belt 3/8"
- Smooth rotary mechanism for a secure hold and easy access of the tools
- Long 3/8" socket wrench for low-lying couplings in confined spaces und protruding thread rods
- Hexagon profile allows precise and profile-friendly screwdriving with high power transmission
- With Take it easy tool finder: colour coding by size

Robust textile belt in the typical Wera design with 9 long 3/8" manual and machine socket inserts (non-impacting) in a confined space. A smoother turning mechanism ensures a secure holding and easy removal of sockets. Includes snap hook for attaching to belt loops or bags. With fleece backing and hook and loop fastener strips for easy attachment e.g. on wall, shelf, workshop trolley or the Wera 2go tool transport system. Long 3/8" manual and mechanical socket wrench inserts (ISO 2725 part 3) from Wera for use in manual and machine operation (non-impacting) even with low-lying screwdriving and protruding threaded rods. With Take it easy tool finder with colour coding by size - for easy and fast location of the required tool. Easy to grasp even with oily hands. With hexagonal profile and ball-catching groove. The hexagon profile allows the transmission of high forces and puts less strain on the edges of bolts or screw heads than a double hexagon profile. Fine-toothed ratchets also make the use of a double hexagon profile superfluous, even in confined spaces, thanks to their small return angle. For external hexagonal bolts and sockets.

Web link
<https://www.wera.de/en/05004545001>

Wera - Belt B Deep 1
 05004545001 - 4013288210555

Wera Werkzeuge GmbH
 Korzter Straße 21-25
 D-42349 Wuppertal
 Tel: +49 (0)2 02 / 40 45-0
 E-Mail: info@wera.de

Wera Belts



Wera Belts



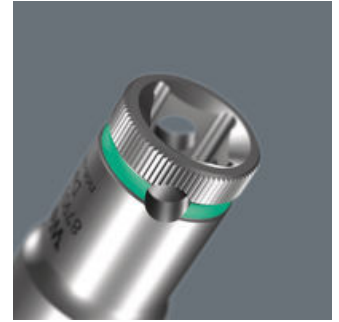
Whoever would have thought that the storage of sockets could be completely revolutionised and that someone could come up with a stylish belt with securely attached sockets that can still be easily removed.

Long design



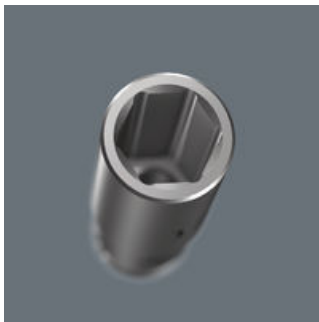
Thanks to the long design of the sockets, even couplings in tight spaces can be reached. Screwdriving at protruding thread rods can also be possible.

Knurling



Knurling on lower end for more grip when used manually.

Profile-friendly power transmission



The hexagon profile offers the transmission of high forces and loads the edges of the bolt or the screw head less than a double hexagon profile. Fine-toothed ratchets also make use of a double hexagon profile superfluous, even in confined spaces, thanks to their small return angle.

Secure hold and easy removal



The all new smooth turning mechanism guarantees both secure and rattle-free storage, yet allows easy removal of the tool.

Practical nonwoven strips



The textile belt can be attached by means of the nonwoven reverse side and the hook and loop strips e.g. to a wall, shelf, tool trolley and to the Wera 2go tool transport system.

Comes with convenient snap hook



The robust textile belt can be secured to a belt loop or pocket by means of the snap hook.

Web link

<https://www.wera.de/en/05004545001>

Wera - Belt B Deep 1
05004545001 - 4013288210555

Wera Werkzeuge GmbH
Korzter Straße 21-25
D-42349 Wuppertal
Tel: +49 (0)2 02 / 40 45-0
E-Mail: info@wera.de

Belt B Deep 1 socket set, 3/8" drive, 9 pieces

Set contents:

8790 HMB Deep 3/8" socket, 8 x 64 mm



05004530001	1x	8 x 64 mm
05004532001	1x	10 x 64 mm
05004534001	1x	12 x 64 mm
05004535001	1x	13 x 64 mm
05004537001	1x	15 x 64 mm
05004538001	1x	16 x 64 mm
05004539001	1x	17 x 64 mm
05004540001	1x	18 x 64 mm
05004541001	1x	19 x 64 mm

Belt B (textile belt), 9 location, unloaded, 45 x 310 mm

1x 45 x 310 mm



Hook and Loop Fastener Strips 30, 30 x 200 mm

1x 30 x 200 mm



Web link

<https://www.wera.de/en/05004545001>

Wera - Belt B Deep 1
05004545001 - 4013288210555

Wera Werkzeuge GmbH
Korzter Straße 21-25
D-42349 Wuppertal
Tel: +49 (0)2 02 / 40 45-0
E-Mail: info@wera.de