

## 8790 HMB Deep 3/8" socket, 12 x 64 mm

Zyklop Accessories, 3/8"



|                        |               |                               |              |
|------------------------|---------------|-------------------------------|--------------|
| <b>EAN:</b>            | 4013288210425 | <b>Size:</b>                  | 130x45x22 mm |
| <b>Part number:</b>    | 05004534001   | <b>Weight:</b>                | 64 g         |
| <b>Article number:</b> | 8790 HMB Deep | <b>Country of origin:</b>     | TW           |
|                        |               | <b>Customs tariff number:</b> | 82042000     |

- Long sockets for low-lying screwdriving, often even with protruding threaded rods in small spaces
- Hexagonal profile enables precise bolting with high power transmission and preserves the profile
- With Take it easy tool finder: colour coding by size
- Knurling at lower end to enable easy gripping when used in manual applications
- For manual and machine operation (non-impact), ball intercept ring
- Made of matt chromed chrome-vanadium

The Wera manual and machine socket (ISO 2725 part 3) can be used in manual and machine operations. With "Take it easy" tool finder with colour coding by size - for quick and easy identification of the required tool. Slip-proof for easy grip even with oily hands. With ball stop groove. For external hexagon screws and bolts. Made of dull-chromed chrome-vanadium.

### Web link

[https://products.wera.de/en/ratchets\\_and\\_accessories\\_the\\_zyklop\\_ratchets\\_the\\_zyklop\\_ratchets\\_3\\_8\\_zyklop\\_accessories\\_3\\_8\\_8790\\_hmb\\_deep.html](https://products.wera.de/en/ratchets_and_accessories_the_zyklop_ratchets_the_zyklop_ratchets_3_8_zyklop_accessories_3_8_8790_hmb_deep.html)

Wera - 8790 HMB Deep  
05004534001 - 4013288210425

Wera Werkzeuge GmbH  
Korzter Straße 21-25  
D-42349 Wuppertal  
Tel: +49 (0)2 02 / 40 45-0  
E-Mail: [info@wera.de](mailto:info@wera.de)

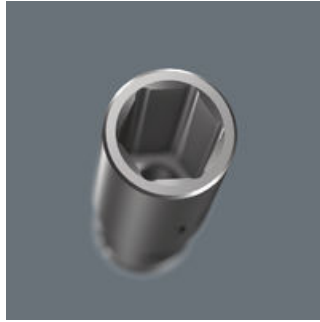
Zyklop Accessories, 3/8"

Long design



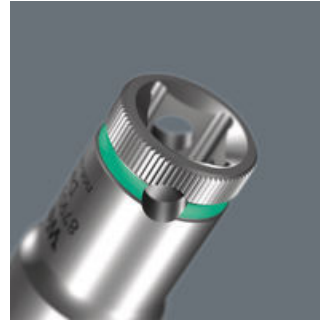
Due to the long design of the socket, screwdriving can also be achieved in small spaces. Fittings with protruding threaded rods are often also possible.

Profile-friendly power transmission



The hexagon profile allows the transmission of high forces and puts less strain on the edges of bolts or screw heads than a double hexagon profile. Fine-toothed ratchets also make the use of a double hexagon profile superfluous, even in confined spaces, thanks to their small return angle.

Knurling



Knurling on lower end for more grip when used manually.

Chrome vanadium steel



The chrome-vanadium steel version makes the plug-in tools suitable for heavy loads.

Take it easy tool finder system



Take it easy tool finder system - with profile and size colour-coding for quick and easy tool selection. Colour-coded system for hexagon drive screws (L-Keys, Zyklop bit sockets), external hex drive screws and nuts (Joker wrenches, Zyklop sockets and Zyklop bit sockets with holding function), and TORX® drive screws (L-Keys, Zyklop bit sockets).




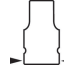
Web link

[https://products.wera.de/en/ratchets\\_and\\_accessories\\_the\\_zyklop\\_ratchets\\_the\\_zyklop\\_ratchets\\_3\\_8\\_zyklop\\_accessories\\_3\\_8\\_8790\\_hmb\\_deep.html](https://products.wera.de/en/ratchets_and_accessories_the_zyklop_ratchets_the_zyklop_ratchets_3_8_zyklop_accessories_3_8_8790_hmb_deep.html)

Wera - 8790 HMB Deep  
05004534001 - 4013288210425

Wera Werkzeuge GmbH  
Korzter Straße 21-25  
D-42349 Wuppertal  
Tel: +49 (0)2 02 / 40 45-0  
E-Mail: info@wera.de

Further versions in this product family:

|                    |                       |  |  |  |  |
|--------------------|-----------------------|---|---|---|---|
|                    |                       | mm  | mm  | mm  | mm  |
| 05004530001        | luminous pink         | 8.0   | 64.0  | 12.2  | 17.0  |
| 05004531001        | gruen_363C            | 9.0   | 64.0  | 13.5  | 17.0  |
| 05004532001        | leuchtgelb_yellowC    | 10.0  | 64.0  | 14.5  | 17.0  |
| 05004533001        | cyan_2985C            | 11.0  | 64.0  | 15.7  | 17.0  |
| <b>05004534001</b> | <b>schwarz_blackC</b> | <b>12.0</b>   | <b>64.0</b>   | <b>16.5</b>   | <b>18.0</b>   |
| 05004535001        | tuerkis_339C          | 13.0  | 64.0  | 19.0  | 17.0  |
| 05004536001        | pink_241C             | 14.0  | 64.0  | 20.0  | 18.0  |
| 05004537001        | weiss                 | 15.0  | 64.0  | 22.0  | 20.0  |
| 05004538001        | violett_2735C         | 16.0  | 64.0  | 22.0  | 20.0  |
| 05004539001        | rot_200C              | 17.0  | 64.0  | 24.0  | 22.0  |
| 05004540001        | leuchtgruen_375C      | 18.0  | 64.0  | 26.0  | 23.0  |
| 05004541001        | blau_307C             | 19.0  | 64.0  | 26.0  | 23.0  |
| 05004542001        | luminous pink         | 20.0  | 64.0  | 28.0  | 25.0  |
| 05004543001        | gruen_363C            | 21.0  | 64.0  | 28.0  | 25.0  |
| 05004544001        | gelb_123C             | 22.0  | 64.0  | 30.0  | 26.0  |

**Web link**
[https://products.wera.de/en/ratchets\\_and\\_accessories\\_the\\_zyklop\\_ratchets\\_the\\_zyklop\\_ratchets\\_3\\_8\\_zyklop\\_accessories\\_3\\_8\\_8790\\_hmb\\_deep.html](https://products.wera.de/en/ratchets_and_accessories_the_zyklop_ratchets_the_zyklop_ratchets_3_8_zyklop_accessories_3_8_8790_hmb_deep.html)

Wera - 8790 HMB Deep  
 05004534001 - 4013288210425

Wera Werkzeuge GmbH  
 Korzter Straße 21-25  
 D-42349 Wuppertal  
 Tel: +49 (0)2 02 / 40 45-0  
 E-Mail: info@wera.de