

EAN:	4013288220592	Size:	280x220x75 mm
Part number:	05004174001	Weight:	1561 g
Article number:	Bicycle Set 6	Country of origin:	CZ
		Customs tariff number:	82054000

- T-handle screwdriver for the transmission of particularly high tightening and loosening torque
- Ergonomic 2-component handle with finger handle recesses and pleasant surface feel for very high power transmission and fatigue-free working
- Take it easy tool finder: colour coding according to profile and size
- With additional short arm for the transmission of extremely high torques due to the leverage of the long arm
- With holding function (HF) on the long arm to securely hold the screw on the tool

10-piece T-handle screwdriver set for operations on the bike: The ideal handle shape allows the transmission of particularly high tightening and loosening moments. The ergonomic shape of the handle fills the ball of the hand well, the fingers lie securely in the softly rounded recessed grips. The whole hand comes into contact with the handle and friction losses between hand and handle are avoided. With holding function at the long arm to hold the TORX® and hexagonal socket screws (from size 3) securely on the tool. Special surface treatment for high corrosion protection and optimal fitting accuracy in the screw. With extra-short arm for the transmission of extremely high torques through the leverage of the long arm. Including metal rack for clearly arranged storage in the workshop.

Web link
<https://www.wera.de/en/05004174001>

Wera - Bicycle Set 6
 05004174001 - 4013288220592

Wera Werkzeuge GmbH
 Korzter Straße 21-25
 D-42349 Wuppertal
 Tel: +49 (0)2 02 / 40 45-0
 E-Mail: info@wera.de

Ergonomic 2-component T-handle



T-handle screwdriver for the transmission of particularly high tightening and loosening torque



The ergonomically shaped 2-component T-handle with finger recesses and pleasant surface facilitates very high power transmission and fatigue-free working.

TORX® HF profile



In tight assembly or disassembly situations, for example in engine compartments, it is not possible to securely hold the screw with the hand on the screwdriver, and the screw subsequently often gets lost. Lengthy searches or the loss of the screw (with the associated danger that could bring about) are the consequence. The HF tools developed by Wera are ideal because they feature an optimised geometry of the original TORX® profile. The wedging forces resulting from the surface pressure between the drive tip and the screw profile mean that the screw is securely held on the tool!

Holding Function (HF) for hexagon socket screws



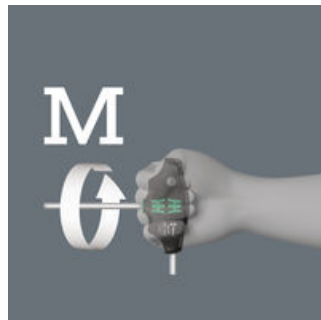
A spring loaded ball ensures the hexagon socket screw to be clamped on the tool tip. Especially helpful in hard to reach areas where you can not use your other hand to hold the screw.

Second arm



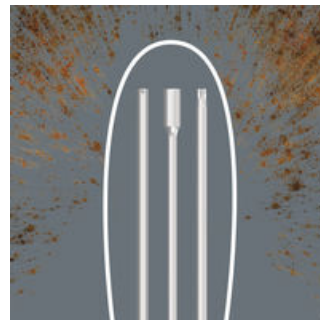
The additional short arm, which emerges laterally from the handle, allows the transmission of extremely high torques by using the long arm as a lever.

High torque transfer



By using the blade as an extension of your lower arm you can transfer particularly high torque.

Corrosion protection and fitting accuracy



Due to the special surface treatment, the blades receive a high level of corrosion protection. The optimum fitting accuracy of the screw is also guaranteed.

Take it easy Tool Finder



Screwdrivers with Take it easy tool finder: colour coding according to profile and size stamp.

Web link

<https://www.wera.de/en/05004174001>

Wera - Bicycle Set 6

05004174001 - 4013288220592

Wera Werkzeuge GmbH

Korzter Straße 21-25

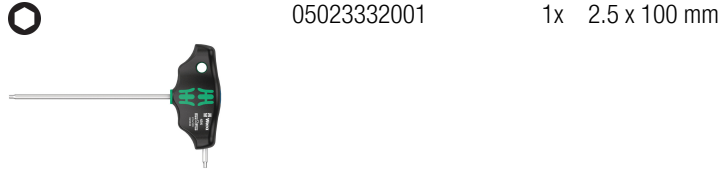
D-42349 Wuppertal

Tel: +49 (0)2 02 / 40 45-0

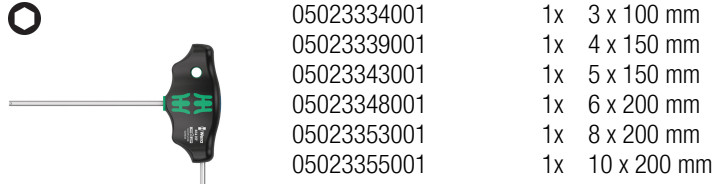
E-Mail: info@wera.de

Set contents:

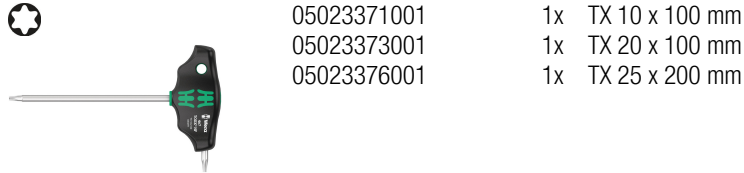
454 T-handle hexagon screwdriver Hex-Plus, 2.5 x 100 mm



454 HF T-handle hexagon screwdriver Hex-Plus with holding function, 3 x 100 mm



467 TORX® HF T-handle screwdriver with holding function, TX 10 x 100 mm



Web link

<https://www.wera.de/en/05004174001>

Wera - Bicycle Set 6

05004174001 - 4013288220592

Wera Werkzeuge GmbH

Korzter Straße 21-25

D-42349 Wuppertal

Tel: +49 (0)2 02 / 40 45-0

E-Mail: info@wera.de