

# 8006 SC 1 Zyklop Hybrid Ratchet Set, 1/2" drive, metric, 13 pieces

## The Zyklop Hybrid Ratchet, 1/2"



**EAN:** 4013288182159  
**Part number:** 05004090001  
**Article number:** 8006 SC 1

**Size:** 325x150x75 mm  
**Weight:** 2624 g  
**Country of origin:** CZ  
**Customs tariff number:** 82041100

- Switchover lever for convenient direction change
- Fine-pitched with 72 teeth for a return angle of only 5°
- Compact textile box with high robustness, low weight and volume
- Colour coding of the sockets according to size
- Smooth Twist to Unlock mechanism for a secure fit and simple removal of the sockets

Zyklop Hybrid ratchet set, 1/2" drive, metric. Including Zyklop Hybrid ratchet and Hybrid handle extension.



### Web link

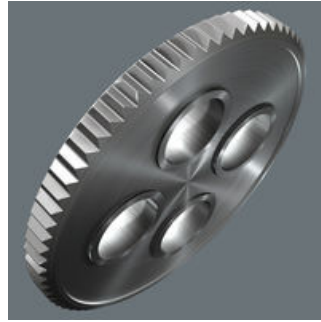
[https://products.wera.de/en/ratchets\\_and\\_accessories\\_the\\_zyklop\\_ratchets\\_the\\_zyklop\\_ratchets\\_1\\_2\\_the\\_zyklop\\_hybrid\\_ratchet\\_1\\_2\\_8006\\_sc\\_1.html](https://products.wera.de/en/ratchets_and_accessories_the_zyklop_ratchets_the_zyklop_ratchets_1_2_the_zyklop_hybrid_ratchet_1_2_8006_sc_1.html)

Wera - 8006 SC 1  
05004090001 - 4013288182159

Wera Werkzeuge GmbH  
Korzter Straße 21-25  
D-42349 Wuppertal  
Tel: +49 (0)2 02 / 40 45-0  
E-Mail: [info@wera.de](mailto:info@wera.de)

The Zyklop Hybrid Ratchet, 1/2"

Low return angle



The reversible ratchet with 72 fine-pitched teeth has a low return angle of only 5°. This short stroke allows fast and precise work in all types of installation.

Ball lock



The ball lock ensures sockets and accessories fit securely, providing increased safety during operation. A short press on the release button allows the tool to be changed quickly.

Kraftform



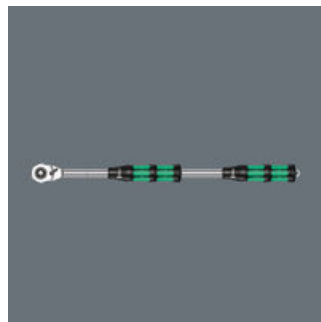
Multi-component Kraftform handle for optimum pressure and tensile loads.

Higher torque transfer



Larger overall length for higher torque transfer.

Hybrid extension



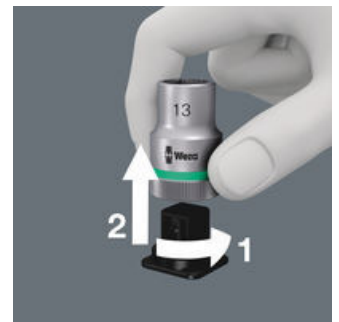
Even more torque can be applied by using the extension.

Take it easy tool finder system



Take it easy tool finder system - with profile and size colour-coding for quick and easy tool selection. Colour-coded system for hexagon drive screws (L-Keys, Zyklop bit sockets), external hex drive screws and nuts (Joker wrenches, Zyklop sockets and Zyklop bit sockets with holding function), and TORX® drive screws (L-Keys, Zyklop bit sockets).

Secure hold and easy removal



The all new smooth turning mechanism guarantees both secure and rattle-free storage, yet allows easy removal of the tool.

Web link

[https://products.wera.de/en/ratchets\\_and\\_accessories\\_the\\_zyklop\\_ratchets\\_the\\_zyklop\\_ratchets\\_1\\_2\\_the\\_zyklop\\_hybrid\\_ratchet\\_1\\_2\\_8006\\_sc\\_1.html](https://products.wera.de/en/ratchets_and_accessories_the_zyklop_ratchets_the_zyklop_ratchets_1_2_the_zyklop_hybrid_ratchet_1_2_8006_sc_1.html)

Wera - 8006 SC 1  
05004090001 - 4013288182159

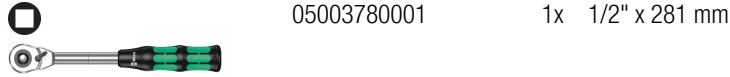
Wera Werkzeuge GmbH  
Korzter Straße 21-25  
D-42349 Wuppertal  
Tel: +49 (0)2 02 / 40 45-0  
E-Mail: info@wera.de

## 8006 SC 1 Zyklop Hybrid Ratchet Set, 1/2" drive, metric, 13 pieces

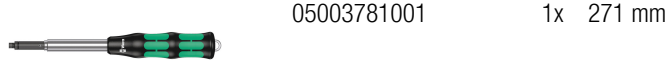
### The Zyklop Hybrid Ratchet, 1/2"

#### Set contents:

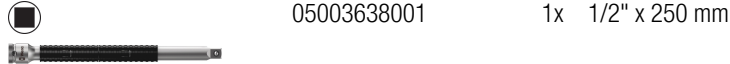
#### 8006 C Zyklop Hybrid Ratchet with switch lever and 1/2" drive, 1/2" x 281 mm



#### 8797 C Zyklop Hybrid extension, 271 mm



#### 8794 LC Zyklop extension with free-turning sleeve, long, 1/2", 1/2" x 250 mm



#### 8790 HMC HF Zyklop socket with 1/2" drive with holding function, 10 x 37 mm



#### Hook and Loop Fastener Strip 240, 50 x 240 mm



#### Web link

[https://products.wera.de/en/ratchets\\_and\\_accessories\\_the\\_zyklop\\_ratchets\\_the\\_zyklop\\_ratchets\\_1\\_2\\_the\\_zyklop\\_hybrid\\_ratchet\\_1\\_2\\_8006\\_sc\\_1.html](https://products.wera.de/en/ratchets_and_accessories_the_zyklop_ratchets_the_zyklop_ratchets_1_2_the_zyklop_hybrid_ratchet_1_2_8006_sc_1.html)

Wera - 8006 SC 1  
05004090001 - 4013288182159

Wera Werkzeuge GmbH  
Korzter Straße 21-25  
D-42349 Wuppertal  
Tel: +49 (0)2 02 / 40 45-0  
E-Mail: [info@wera.de](mailto:info@wera.de)