

# 8004 B Zyklop Metal Ratchet with switch lever and 3/8" drive, 3/8" x 222 mm

## The Zyklop Metal Ratchet Switch, 3/8"



<b>EAN:</b>	4013288174048	<b>Size:</b>	230x50x27 mm
<b>Part number:</b>	05004034001	<b>Weight:</b>	327 g
<b>Article number:</b>	8004 B	<b>Country of origin:</b>	CZ
		<b>Customs tariff number:</b>	82041100

- Convenient direction change thanks to switchover lever
- Extremely slim ratchet with long lever
- Return angle of only 5°
- Secure socket locking
- For 3/8" square sockets with ball lock

Zyklop Metal ratchet with switchover lever. Slim design for work in even very confined spaces. The 72 fine-pitched teeth allow a small return angle of 5°. Comes with a switchover lever for convenient direction change and secure socket locking function. Forged, full metal ratchet (chrome-molybdenum steel) for particularly high robustness and long service life.



### Web link

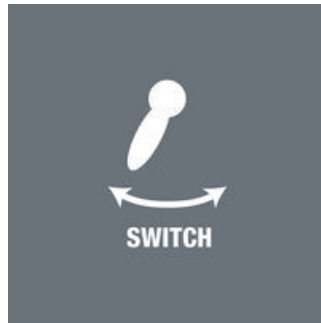
[https://products.wera.de/en/ratchets\\_and\\_accessories\\_the\\_zyklop\\_ratchets\\_the\\_zyklop\\_ratchets\\_3\\_8\\_the\\_zyklop\\_metal\\_ratchet\\_switch\\_3\\_8\\_8004\\_b.html](https://products.wera.de/en/ratchets_and_accessories_the_zyklop_ratchets_the_zyklop_ratchets_3_8_the_zyklop_metal_ratchet_switch_3_8_8004_b.html)

Wera - 8004 B  
05004034001 - 4013288174048

Wera Werkzeuge GmbH  
Korzter Straße 21-25  
D-42349 Wuppertal  
Tel: +49 (0)2 02 / 40 45-0  
E-Mail: [info@wera.de](mailto:info@wera.de)

The Zyklop Metal Ratchet Switch, 3/8"

Zyklop Metal Switch



Due to the ever-more confined working environment, space is becoming more and more an issue for the application of ratchets. Our product developers therefore intensively occupied themselves with the issue of confined working spaces, and Wera has now solved this problem. The extremely slim and robust Zyklop Metal ratchet with a long lever was what emerged. When the change in direction needs to be quick, the Zyklop Metal Switch ratchet is the right tool. When the socket must not get lost and a coincidental change of direction has to be avoided at all cost, the Zyklop Metal Push is the correct choice.

Zyklop Metal Switch



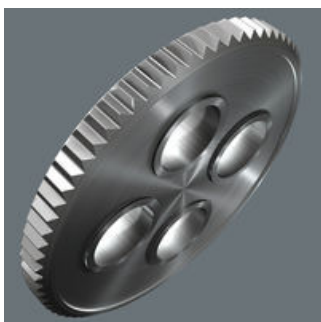
Forged, full metal ratchet (chrome-molybdenum) that is extremely robust with a long service life; slim design to enable work in very confined spaces.

Reversible



Switch lever for convenient change of direction.

Small return angle



Fine-pitched with 72 teeth for a return angle of only 5°

Ball lock



The ball lock ensures sockets and accessories fit securely, providing increased safety during operation. A short press on the release button allows the tool to be changed quickly.

Web link

[https://products.wera.de/en/ratchets\\_and\\_accessories\\_the\\_zyklop\\_ratchets\\_the\\_zyklop\\_ratchets\\_3\\_8\\_the\\_zyklop\\_metal\\_ratchet\\_switch\\_3\\_8\\_8004\\_b.html](https://products.wera.de/en/ratchets_and_accessories_the_zyklop_ratchets_the_zyklop_ratchets_3_8_the_zyklop_metal_ratchet_switch_3_8_8004_b.html)

Wera - 8004 B  
05004034001 - 4013288174048

Wera Werkzeuge GmbH  
Korzerter Straße 21-25  
D-42349 Wuppertal  
Tel: +49 (0)2 02 / 40 45-0  
E-Mail: [info@wera.de](mailto:info@wera.de)

# 8004 B Zyklop Metal Ratchet with switch lever and 3/8" drive, 3/8" x 222 mm

The Zyklop Metal Ratchet Switch, 3/8"



Further versions in this product family:



inch



mm



mm



mm

05004034001	3/8"	222.0	26	29
-------------	------	-------	----	----

## Web link

[https://products.wera.de/en/ratchets\\_and\\_accessories\\_the\\_zyklop\\_ratchets\\_the\\_zyklop\\_ratchets\\_3\\_8\\_the\\_zyklop\\_metal\\_ratchet\\_switch\\_3\\_8\\_8004\\_b.html](https://products.wera.de/en/ratchets_and_accessories_the_zyklop_ratchets_the_zyklop_ratchets_3_8_the_zyklop_metal_ratchet_switch_3_8_8004_b.html)

Wera - 8004 B

05004034001 - 4013288174048

Wera Werkzeuge GmbH

Korzter Straße 21-25

D-42349 Wuppertal

Tel: +49 (0)2 02 / 40 45-0

E-Mail: [info@wera.de](mailto:info@wera.de)