



EAN:	4013288234650	Size:	86x23x23 mm
Part number:	05003662001	Weight:	36 g
Article number:	8011	Country of origin:	TW
		Customs tariff number:	82041100

- Suitable for direct take-up of bits with 1/4" hex head drive
- For bitholding screwdrivers with 1/4" bit mounting
- Drop-forged, full-steel design
- Fine-pitched ratchet mechanism and small return angle of 6°
- Thumbwheel for rapid fastening
- Use of 1/4" sockets also possible with the Wera adaptor 870/1

Wera bit ratchet for bitholding screwdrivers with 1/4" mounting. Easiest operation, even with just one hand, in cramped screwdriving applications. Drop-forged solid steel design. Fine toothing mechanism with 60 teeth allows for a low return angle of 6° for precise working. The knurl allows fast screwdriving in cramped situations when there is no space for the ratchet. Easy clockwise/counterclockwise switching. Ergonomically shaped ratchet head for 1/4" hex drive bits and, using an adapter, also for 1/4" sockets and bit sockets.

Web link

https://products.wera.de/en/new_products_2025_zyklop_mini_4_bit_ratchet_8011.html

Wera - 8011
05003662001 - 4013288234650

Wera Werkzeuge GmbH
Korzerter Straße 21-25
D-42349 Wuppertal
Tel: +49 (0)2 02 / 40 45-0
E-Mail: info@wera.de

For 1/4" hex drive bits



The Zyklop Mini 4 mini ratchet is suitable for mounting bits with 1/4" external hexagon drive as per DIN ISO 1173-C 6.3 and E 6.3 and Wera connection series 1 and 4.

For bitholding screwdrivers with 1/4" bit mounting



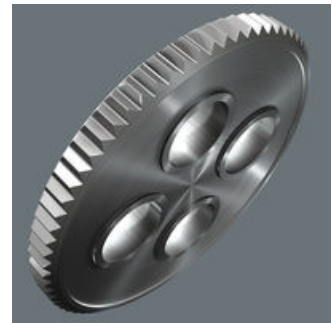
The 8011 Zyklop Mini 4 bit ratchet has a 1/4" hexagonal socket connection which allows it to be used with every bitholding screwdriver which has a 1/4" external hexagon mounting.

Thumbwheel for rapid fastening



High working speeds can be attained with the Zyklop Mini bit ratchet. The thumb wheel is important, enabling more rapid screwdriving, and the lever of the Zyklop Mini only needs to be used for the final tightening of the screw.

The Zyklop Mini



The fine tooth mechanism, with its 60 teeth, allows a small return angle of only 6° - ideal for precision work.

Easy switching



Simple switching between left/right operations.

With adapter for 1/4" sockets and bit sockets



1/4" sockets and bit sockets can also be used with the 8011 Zyklop Mini 4 bit ratchet by connecting the adapter 870/1 (1/4" hexagon to 1/4" square head)

For small spaces



With its small size, the Zyklop Mini bit ratchet is ideal for all particularly tight installation spaces.

Further versions in this product family:



inch



mm

05003662001

1/4"

50.0

Web link

https://products.wera.de/en/new_products_2025_zyklop_mini_4_bit_ratchet_8011.html

Wera - 8011

05003662001 - 4013288234650

Wera Werkzeuge GmbH

Korzerter Straße 21-25

D-42349 Wuppertal

Tel: +49 (0)2 02 / 40 45-0

E-Mail: info@wera.de